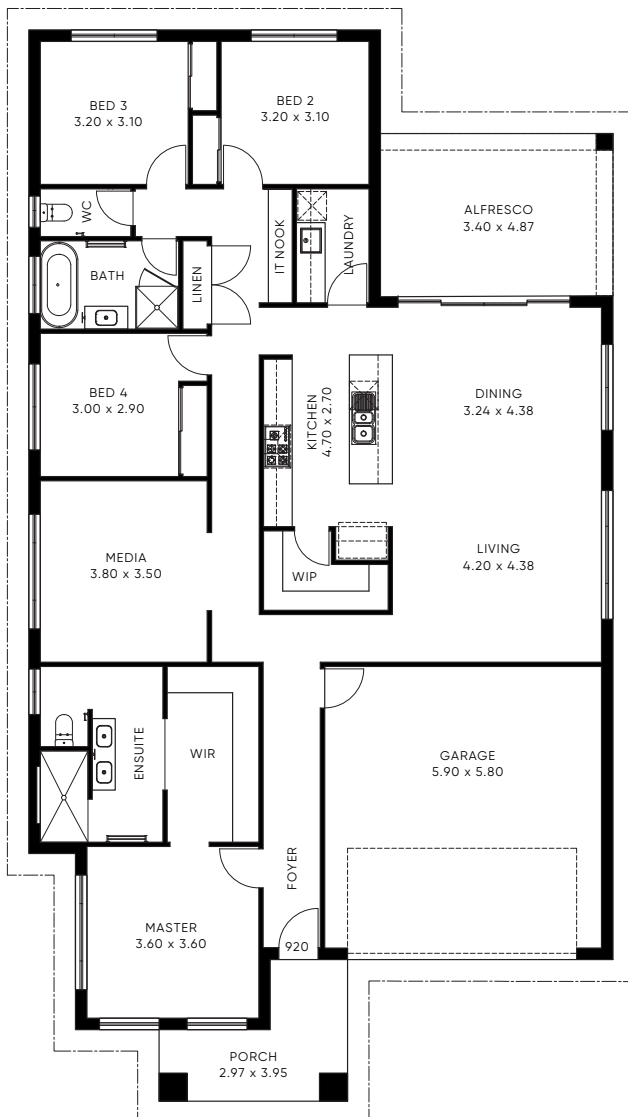


HOUSE	240M2	+	LAND	528M2
4	2		2	2

FROM **\$859,360**



## HOUSE + LAND

PACKAGE INCLUSIONS

- ✓ White Series Inclusions Package
  - ✓ Ducted air-conditioning
  - ✓ Full flooring package
  - ✓ Upgraded 900 stainless steel appliances to kitchen
  - ✓ Upgraded electrical package including down lights to every room
  - ✓ 920mm wide front door
  - ✓ Window coverings
  - ✓ Covered alfresco & concrete slab
  - ✓ Colorbond roof
  - ✓ Driveway
  - ✓ Haymes 3 coat paint system
  - ✓ Site costs & basix
- + LANDSCAPING UPGRADE AVAILABLE

(02) 4044 1900  
info@candorhomes.com.au  
CANDORHOMES.COM.AU

\*All information contained in this flyer should be used as a guide only. Please contact your Candor Homes consultant for full details.