



emerge
COLLECTION

LOT 424
HAMPSTEAD CIRCUIT
THE LOXFORD, MAITLAND

AVOCA 173 | COSMO

 4 Beds
  2 Baths
  2 Parks
  18.5 Squares
  10.7m Wide

Land Size: 536m²

\$754,573
Including Land: \$377,000



*Achievable
price without
sacrificing
quality*

HOUSE AND LAND PACKAGE INCLUDES:

- ✓ Designer kitchen
- ✓ Italian made appliance package Taubmans
- ✓ premium paint system Complimentary
- ✓ electrical planning
- ✓ PGH/Austral bricks and concrete roof tiles
- ✓ Insulation
- ✓ Hume front entry door
- ✓ Alfresco roof and concrete slab
- ✓ Colour-on sealed driveway
- ✓ Internal floor coverings
- ✓ Tiling to Porch and Alfresco



Sales Executive

Stephanie Etwell | 0403 326 455
stephanie.etwell@montgomeryhomes.com.au




The Loxford

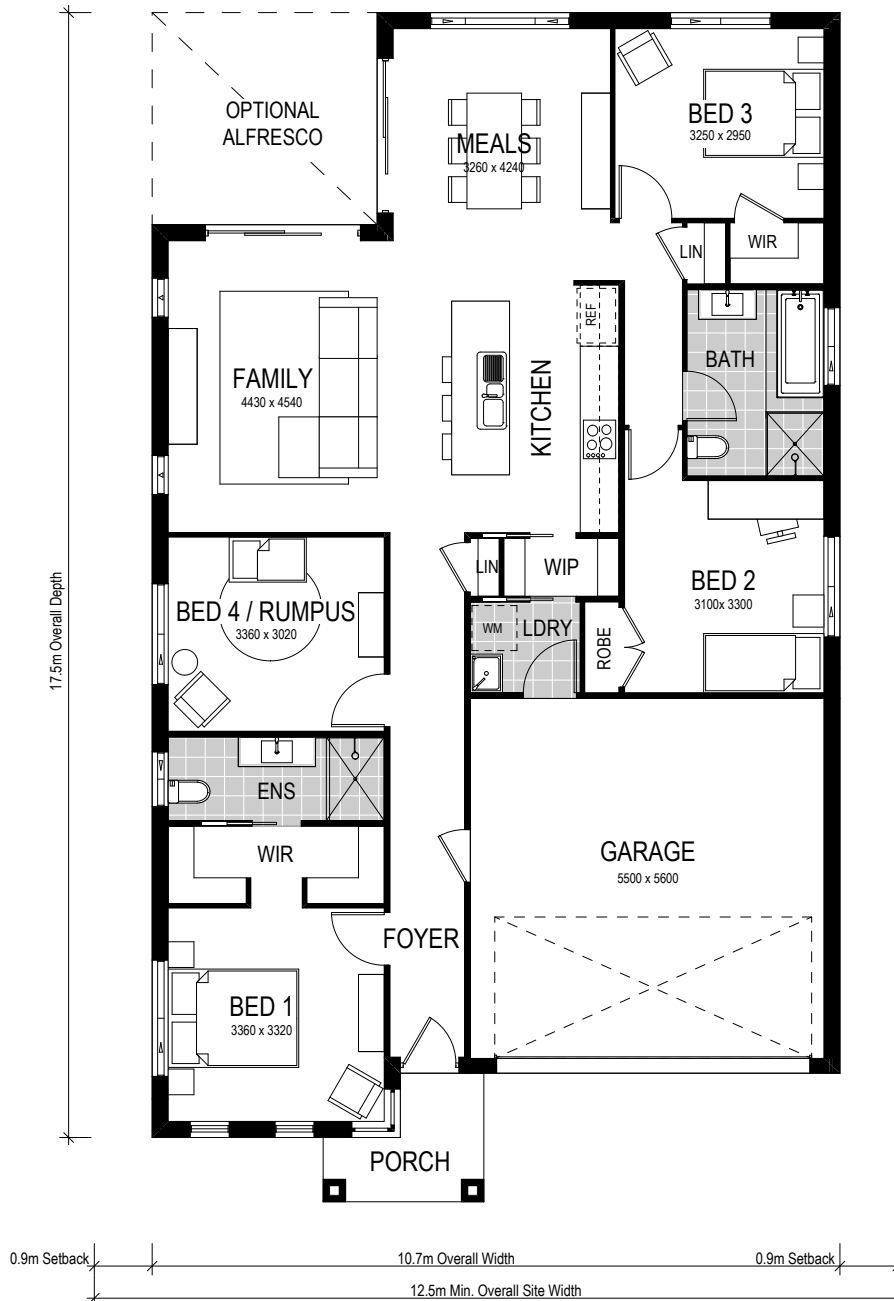
AVOCA 173 | COSMO

 4 Beds
  2 Baths
  2 Parks

This home design features four bedrooms, or three bedrooms and a separate rumpus room. With a secluded master bedroom with generously sized dual walk-in robes and ensuite, open plan kitchen – featuring a walk-in-pantry, and the secondary bedrooms separate to the main living area, this home is perfect for modern family living. This is a highly considered floorplan, which is designed to enhance your lifestyle and make the best use of your space.



- ✓ Move in sooner
- ✓ Simplified selections
- ✓ Site costs included
- ✓ Interior and exterior inclusions
- ✓ First home buyer appeal



CONDITIONS APPLY This is not a final tender. Montgomery Homes reserves the right to revise plans, pricing and specifications without obligation or notice. Pricing is subject to Council and statutory or regulatory authority requirements (Eg. BASIX, Mines, Bushfire etc). Designs and plans are copyright protected and remain the property of Montgomery Homes Pty Ltd at all times. Images are for illustrative purposes only. Refer to Tender for pricing or inclusions/exclusions regarding external works i.e. turf, landscaping, driveway, retaining walls, and floor coverings, window furnishings, and light fittings.