

# HOME AND LAND

# Domaine homes

  
**The Loxford**



HOME SIZE: 224.5M<sup>2</sup>

LAND SIZE: 518M<sup>2</sup>

 4  2  2  2

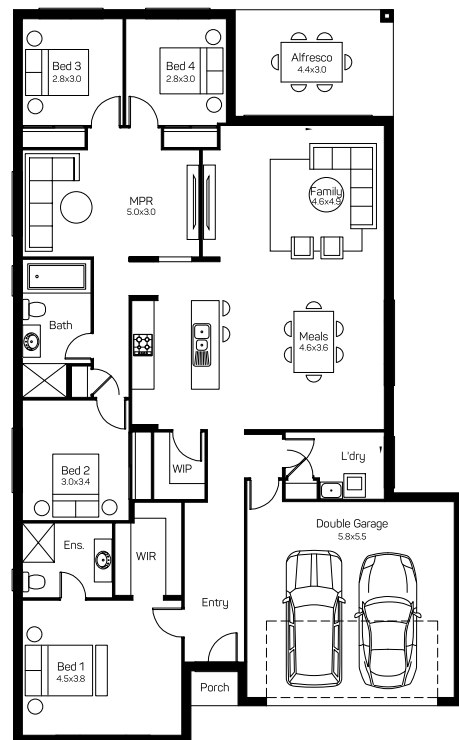
# \$774,520\*

## MALIBU 24 SORRENTO FACADE

Lot 428 Hampstead Circuit, Gillieston Heights, The Loxford Estate

### HOUSE AND LAND PACKAGE INCLUSIONS

- Lifetime structural guarantee
- Hybrid steel frame
- 900mm oven, cooktop and rangehood
- 20mm stone kitchen benchtops
- Laminated overhead cupboards with bulkheads
- Soft close drawers and doors to kitchen and bathrooms
- Stainless steel dishwasher
- Flyscreens to opening windows
- Floor coverings
- Fully ducted air conditioning
- 3.5kW solar package
- And much, much more...



Domaine Homes | [contact@domainehomes.com.au](mailto:contact@domainehomes.com.au) | 13 64 69

\*Facade image may depict features not included in the package prices shown such as render, tiling, lighting, roof covering, timber decking and landscaping. Plans are subject to approval by the Principal Developer and Local Authorities. Domaine Homes NSW reserves the right to withdraw or alter this package at any time without notice. Allowance for site costs included. Pricing is subject to change without notice. Domaine Homes NSW is not the owner of the land and is not responsible for final site dimensions or registration times. All information given at this time is believed to be correct.