



from **\$871,741**

WEBBER 222

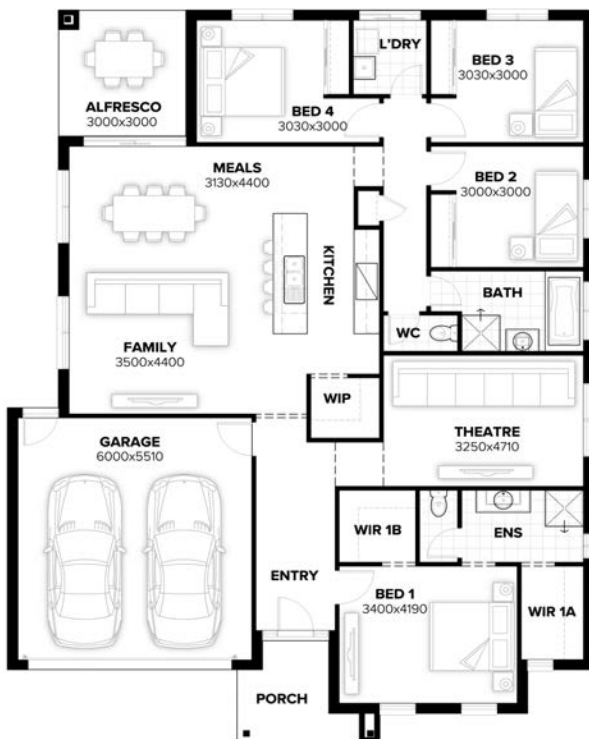
Barrington facade

Home size : 24.03 SQ

4 2 2 569 sqm

Lot 429 Hampstead Circuit, Maitland (The Loxford)

- Start your dreams off the right way with Burbanks "Dream Start " Promo including - Undermount sink; 2590 ceilings 900mm appliances including dishwasher and 12mm Stone benchtops from Dekton
- Full floor coverings throughout - Carpet to bed rooms and laminate to living
- 30 year structural warranty
- Ducted AC through out - cool in summer and warm in winter.
- Free energy assessment (7 Star rated BASIX)
- All Site cost and allowances.
- Family owned and operated since 1983



Gareth Campbell

0484 667 464

Gareth.Campbell@burbank.com.au
www.burbank.com.au

*Images are for illustrative purposes only and may include upgrade items, fixtures, finishes available at an additional cost. Burbank does not supply items such as furniture, landscaping, fencing and external lighting. Any prices listed do not include the supply of these items. Packages are subject to availability and to the subject to developer's design review panel and council's final approval. Package price excludes stamp duty on land, legal fees and conveyancing costs. For detailed home pricing, please consult a Burbank sales consultant for further information. Burbank reserves the right to alter the images, descriptions, and/or pricing at any time without notice. All designs are the property of Burbank and must not be used, reproduced, copied or varied, wholly or in part without written permission from an authorised Burbank representative. Copyright. Burbank Australia (NSW) Pty Ltd. ABN 88 610 822 770. Builders Registration numbers; NSW BL 295627C and ACT BL 2016566. - Printed on: 8/02/2024

Burbank