



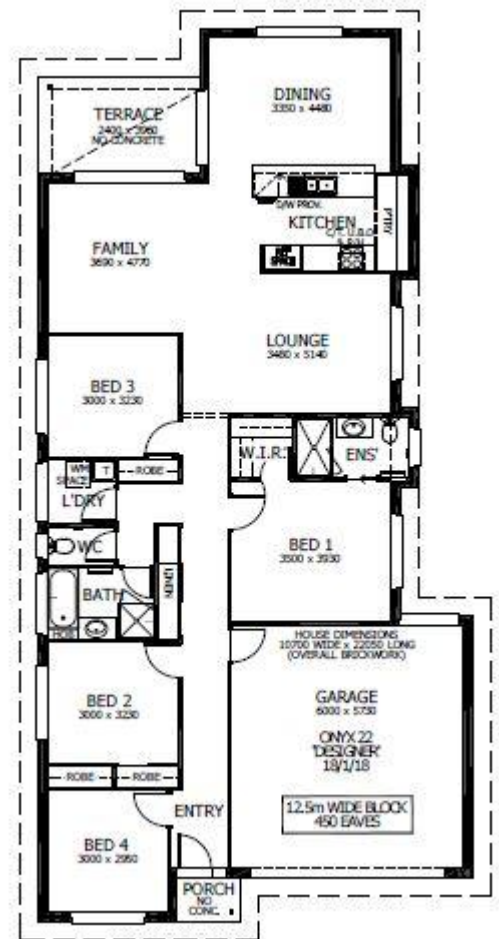
Image may depict upgrades that are not included in the pricing.

Floor area: 201.01m² / 21.64sq | Block Size: 535.9m²
 Address: Lot 424 Hampstead Circuit, Gillieston Heights



Onyx 22 Package Inclusions

- * Classic facade
- * Open Plan Living
- * Covered Alfresco
- * 22.5° roof pitch
- * Perry Homes 'Standard Inclusions'
- * Designer Plus Kitchen
- * Upgraded Designer Downlighting Package
- * All internal floor coverings
- * Flyscreens to all windows and sliding doors
- * Wall mounted clothesline
- * TV antenna
- * Letterbox
- * Concrete allowance to driveway, porch & terrace
- * Allowance for late registration date
- * Allowance for BAL 29 requirements
- * Site Works and BASIX allowance including Council lodgement *(subject to Contour Survey)*



Ben Hancock
 New Home Consultant
 Perry Homes (Aust) Pty Ltd

E: ben.hancock@perryhomes.com.au
M: 0435 956 546

"Disclaimer: Due care has been taken with the siting, design and pricing of the proposed dwelling based upon current information and is correct at time of publication. This however, may change as a result of other influences such as; developer covenants, local, state or federal government requirements etc. Also, undetermined site conditions such as; tree removal, acoustics, bushfire, rock etc. may be excluded unless otherwise specified. Terms and conditions apply to campaigns and special offers. Plans and images are for illustrative purposes only and may depict features such as landscaping, furniture, window furnishings and lighting that are not included in the package price or which are not available from Perry Homes. Land price is correct at time of printing and subject to change without notice. Perry Homes reserve the right to withdraw this package at any time without notice. Perry Homes (Aust) Pty Ltd. QBCC Act Lic. No.718748 NSW Lic No. 110970C."