

# HOUSE + LAND

# ClarendonHomes



## The Loxford



HOME SIZE: 273m<sup>2</sup>

LAND SIZE: 582m<sup>2</sup>

4 | 3 | 2 | 2

# \$862,510\*

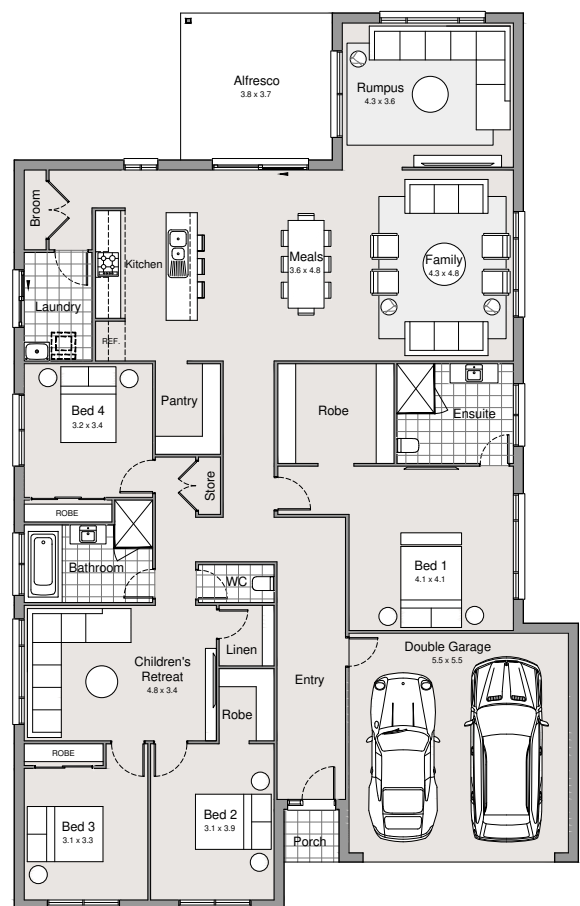
FIXED  
PRICE

## MEREWEATHER 29 CONTEMPORARY FACADE

Lot 412 Berkshire Rd, Gillieston Heights  
Land Reg. Q4 2025

### UPGRADES INCLUDED

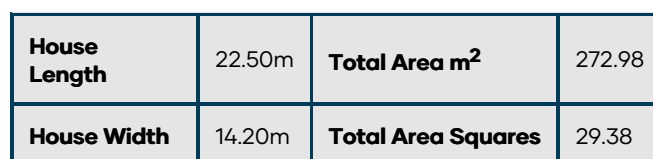
- **EOFY Savings promotion 10% off\* the base price and 10% off\* your facade (already applied)**
- 7 Star Basix
- 2600mm Ceiling Heights to Ground Floor
- Aspire Signature Pack
- Fully ducted air conditioning
- Site Costs
- Solar
- Hybrid Frame
- 20mm Stone benchtops to kitchen
- 900mm Smeg oven
- 900mm Smeg gas cooktop or 900mm Smeg electric cooktop (only available if gas is not available to property)
- 900mm Smeg glass canopy rangehood
- Smeg Freestanding Dishwasher
- And much, much more...



Clarendon Homes | [sales@clarendon.com.au](mailto:sales@clarendon.com.au) | 13 63 93

Terms and conditions: Images are provided for illustrative purposes only. Additional charges may apply where designs or facades are modified and/or floorplan options added. Land value included in the package. Clarendon Homes reserves the right to change the price without notice. Only applies to home built in NSW. E&OE. Clarendon Homes (NSW) Pty Ltd. ABN 18 003 892 706 BL 22 98 C.

Date/Time: 22/5/2024 10:41



2024 **EOFY**  
SAVINGS

**10% OFF** Home Designs\*  
and 10% OFF Facades^

**PLUS** you can add a Signature Pack  
with our most-loved inclusions

Terms & conditions apply. The 'EOFY Savings' promotion is available from 4 May 2024 to 30 June 2024. \*The 10% discount applies to the Base Price of the home. ^The 10% discount on facades applies to a maximum discount of \$5000. This promotion is available with any Clarendon Luxe and Aspire specification home and is based on standard floorplans. Only available in NSW to new clients who place an initial deposit and sign their presented tender within 7 days from the presentation date ("the Offer Acceptance Period"). Clarendon Homes reserves the right to withdraw this offer at any time. E&OE. 5/2024

LOVE COMING HOME™