

# HUNTER HOMES

live  
WITH HEART ♥

LOT 106, Berkshire Road  
**GILLESTON HEIGHTS, NSW**

Land 528m<sup>2</sup>

**\$720,181\***

**BOWMAN ALT  
FACADE**

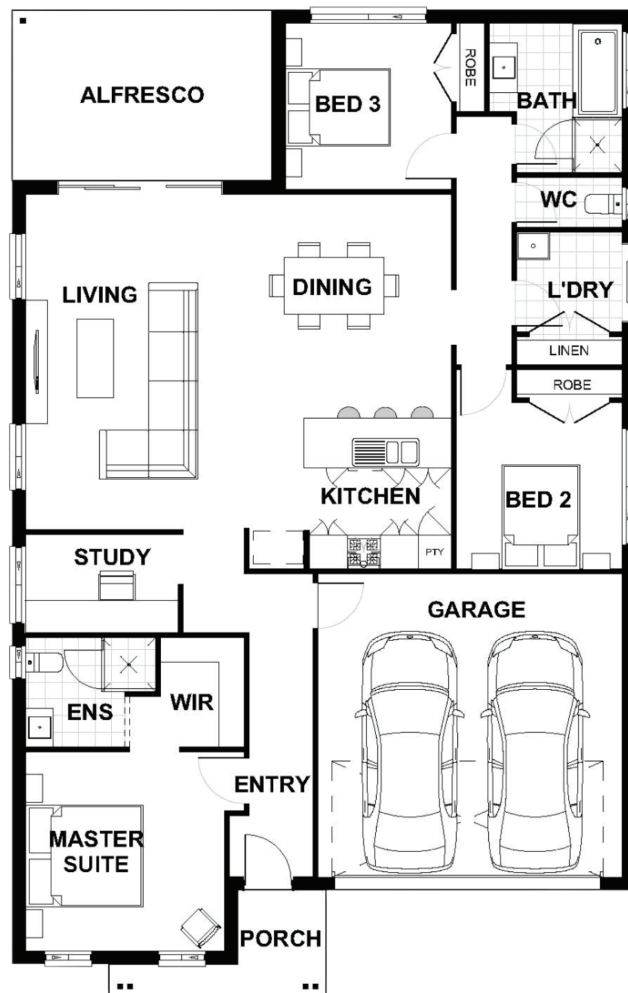


Total (sqs.)	20.4	Width (m)	11.27
Total (m <sup>2</sup> )	189.49	Length (m)	17.87

Contact **Todd Keasey**  
0499008411 [todd@hunterhomesnsw.com](mailto:todd@hunterhomesnsw.com)

## Features & Inclusions

- ✓ MOVE IN READY!
- ✓ Standard Site Costs & Basix
- ✓ 2590mm High Ceilings
- ✓ Carpet & Tiles Throughout
- ✓ Tiles to Patio & Alfresco
- ✓ 12.5KW Fujitsu A/C System
- ✓ 2.9KW Solar System
- ✓ Colorbond Roof
- ✓ 3 Coat Paint System
- ✓ Haier French Door Fridge
- ✓ Fisher & Paykel Freestanding Oven, Fridge, Microwave
- ✓ 20mm Stone Benchtops
- ✓ Soft Close Doors and Drawers
- ✓ ACC to Exterior Walls
- ✓ 35 LED Downlights



**Terms and Conditions:** Valid until 31st July 2024. 18 month price lock if fee paid on or before 31st July 2024. Images shown on this brochure are approximate and for illustration purposes only, these plans may not be drawn to scale. Façades and other images on this brochure may be shown as optional upgrades or not included, additional fixtures and finishes that are featured on this document may not be included in the base cost such as landscaping, tiling, decking, furniture, feature lighting, pools, driveways etc. Land estate pricing is subject to the developers guidelines. Hunter Homes reserves the right to change plans and inclusions at any time. This package is subject to council approval. All designs that are developed remain the property of Hunter Homes Pty Ltd under copyright law & we retain & claim all rights to these plans. Changing plans by 50% or more does not avoid legal responsibility for a copyright breach.

**1300 BUY HOME**

See our website for Display locations  
[www.hunterhomesnsw.com](http://www.hunterhomesnsw.com)



**The Loxford**