



ASHLEY 26

House & Land Package



\$811,689*

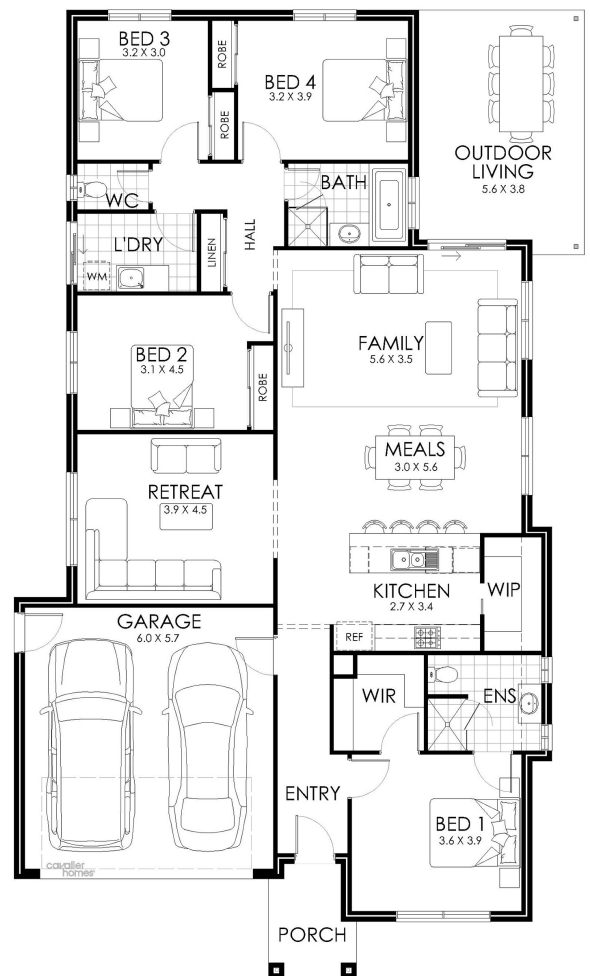
Lot 721 Deighton Road Kurri
Kurri

Lot Size: 613m²

House Size: 238.68m²

List of Inclusions:

- Lifestyle inclusions
- Colorbond steel roof
- Ducted Heating & Cooling
- 900mm stainless steel appliances
- Allowance for floor coverings
- Site Cost allowance
- Quality fittings and fixtures
- Driveway and crossover allowance
- Additional living area
- Outdoor living area



**cavalier
homes**[®]
REAL HOMES.. REAL PEOPLE.

Find Out More

Contact Ben Heaft
02 9044 8777

*All prices, images, inclusions and plans shown in this document and any Display Home vary throughout Australia and over time and are provided as a guide only. Unless otherwise stated in writing, new home prices do not include furniture, decorator items, driveways, paths, landscaping, swimming pools, letterboxes, fencing, security systems, vacuum systems, telephone, intercom and communication systems, air conditioning, heating systems and or connection fees. All Cavalier Homes designs are copyright. None of the information provided in this brochure forms part of any contract with Cavalier Homes and you should not rely upon any information contained in this brochure in deciding whether to enter into any contract with Cavalier Homes. Please refer to the particulars of your Contract for the specific design and details of any inclusions. Package reference number 19493301317. Cavalier Homes Greater Newcastle is a registered building practitioner number 334818C (NSW).