



The Loxford

from **\$811,487**

WEBBER 222

Barrington facade

Home size : 24.03 SQ

4 2 2 613 sqm

Lot 721 Deighton Road, Gillieston Heights (The Loxford)

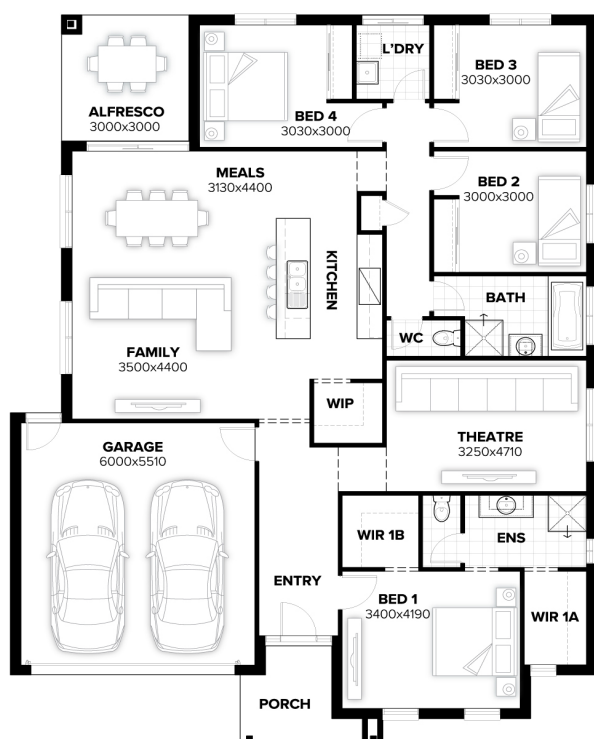
- Land \$402 000 + Build \$409 487
- 100% Australian Owned and Operated Since 1983
- Site Costs Included + 7 Star BASIX Compliance + 6kW Solar System and Inverter
- Floor Coverings Throughout + Tiling to Alfresco
- Ducted AC + 2595mm Ceilings to Ground Floor + LED Lighting Throughout
- 900mm Appliances Incl Induction Cooktop + Stone Benchtop and Undermount Double Sink to Kitchen
- Wall Hung Vanities + Shower Niches + Premium Tapware Upgrade to Bathrooms



Lea Hanna

0487 905 459

Lea.Hanna@burbank.com.au
www.burbank.com.au



*Images are for illustrative purposes only and may include upgrade items, fixtures, finishes available at an additional cost. Burbank does not supply items such as furniture, landscaping, fencing and external lighting. Any prices listed do not include the supply of these items. Packages are subject to availability and to the subject to developer's design review panel and council's final approval. Package price excludes stamp duty on land, legal fees and conveyancing costs. For detailed home pricing, please consult a Burbank sales consultant for further information. Burbank reserves the right to alter the images, descriptions, and/or pricing at any time without notice. All designs are the property of Burbank and must not be used, reproduced, copied or varied, wholly or in part without written permission from an authorised Burbank representative. Copyright. Burbank Australia (NSW) Pty Ltd. ABN 88 610 822 770. Builders Registration numbers: NSW BL 295627C and ACT BL 2016566. - Printed on: 23/04/2025

Burbank