

HOME AND LAND

Domaine homes



HOME SIZE: 180.6M²

LAND SIZE: 462M²

3 2 2 2

\$722,930*

JASPER 19 TRADITIONAL FACADE

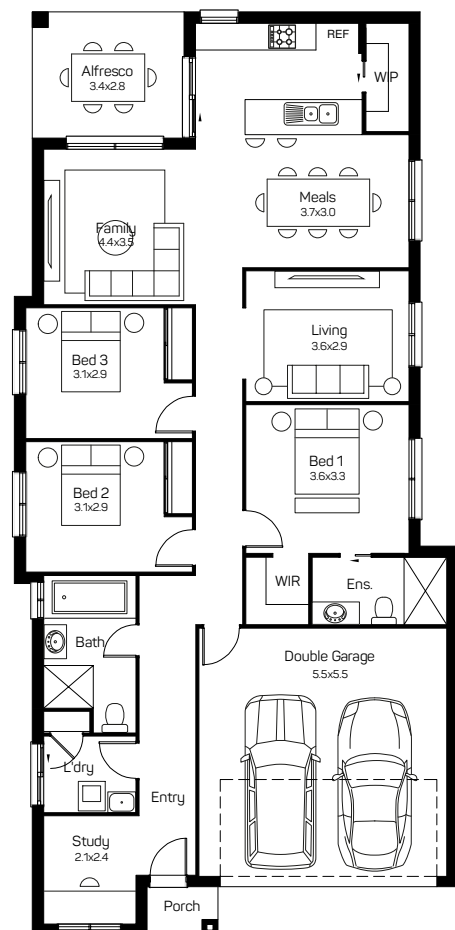
Lot 604 Columbus Road, Gillieston Heights,
The Loxford Estate

HOUSE AND LAND PACKAGE INCLUSIONS

- Lifetime Structural Guarantee
- Hybrid steel frame
- Induction cooktop
- 20mm stone kitchen benchtop
- Laminated overhead cupboards with bulkheads.
- Soft close drawers and doors to kitchen and bathrooms
- Stainless steel dishwasher
- Flyscreens to opening windows
- Floor coverings
- Downlights throughout home
- Fully ducted Air Conditioning
- 6.6kW Solar Package
- And much, much more...



The Loxford



Lucy Merrick 0456 649 113 | lmerrick@domainehomes.com.au | 13 64 69

*Facade image may depict features not included in the package prices shown such as render, tiling, lighting, roof covering, timber decking and landscaping. Plans are subject to approval by the Principal Developer and Local Authorities. Domaine Homes NSW reserves the right to withdraw or alter this package at any time without notice. Allowance for site costs included. Pricing is subject to change without notice. Domaine Homes NSW is not the owner of the land and is not responsible for final site dimensions or registration times. All information given at this time is believed to be correct.