







## House & Land

Montrose 187N - Mornington Facade

**\$737,940\***

Home Size: 187.42m<sup>2</sup> | Lot Size: 462m<sup>2</sup> | 14m x 33m Lot

 4  2  2  2

Lot 604 Columbus Road, Gillieston Heights | The Loxford Estate

### House & Land Package Inclusions


- ✓ Designer Inclusions Promotion
- ✓ Site Costs Allowance
- ✓ Caesarstone benchtops to kitchen, bathroom and ensuite
- ✓ European designed stainless steel kitchen appliances
- ✓ Quality bathroom tapware, baths and frameless mirrors
- ✓ Semi-frameless shower screen to bathroom and ensuite
- ✓ Stained timber feature front entry door
- ✓ Carpet and Tiling
- ✓ Integrated slab to Porch and Outdoor Living Area
- ✓ Mirror sliding doors to robes
- ✓ Steel frame and Steel Roof
- ✓ Ducted Multi-Zone Air Conditioning
- ✓ Flyscreens to windows and sliding doors
- ✓ BASIX allowance




**The Loxford**

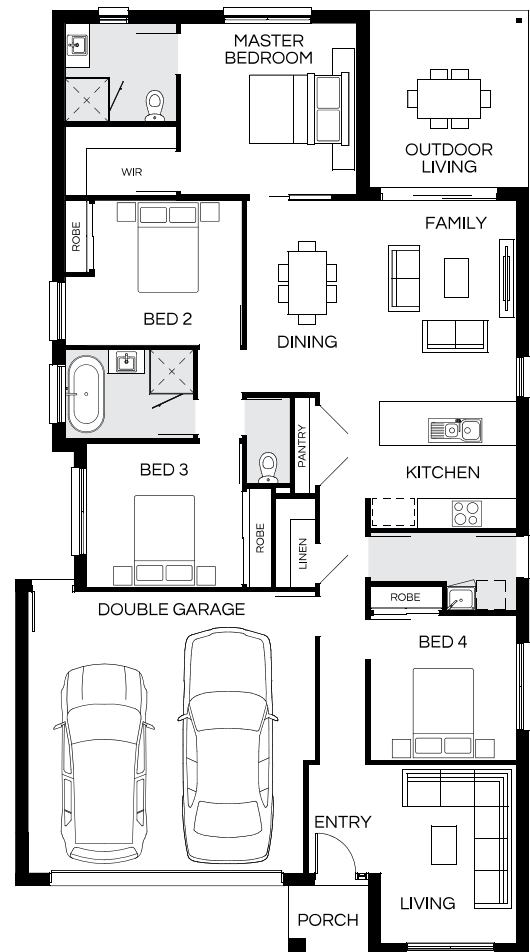


**Angela Workman**

 0461 445 620

 a.workman@coralhomes.com.au

Facade image may depict features such as landscaping, furniture, driveway, window treatments and lighting which are not included in the package and not available from Coral Homes.



**CORAL  
HOMES**

Facade image may depict features such as landscaping, timber decking, furniture, window treatments and lighting which are not included in the package price or which are not available from Coral Homes. Package pricing excludes any upgrades or additional site works for mine subsidence requirements. Floorplan is indicative only, conceptual in nature and subject to change. Floorplan may depict fixtures, fittings, features, finishes, inclusions, furnishings, vehicles and/or other products which are not included in the house design, not included in the package price and/or not available from Coral Homes. \*Price shown is based on Coral homes Newcastle / Central Coast region price list dated 06-05-2025. Land price at the time of printing is \$350,000. Price shown does not include stamp duty, registration fees, additional amounts payable in respect of variations to the house design requested by the buyer or any other incidental fees associated with the acquisition of the land and home. Plan is subject to approval by the Principal Developer and Local Authorities. Additional costs may apply for bushfire, acoustics, N3, easements or additional covenant requirements and retaining walls. Coral Homes reserves the right to withdraw this package at any time, prior to entry into a contract, without notice. QBCC 50792/1014053, OFT NSW 62084C, BLD260339.