



## House & Land

Grange 191N - Newport Facade

# \$747,915\*

Home Size: 191.41m<sup>2</sup> | Lot Size: 501.6m<sup>2</sup> | 12.5m x 33m Lot

4 
 2 
 2 
 2

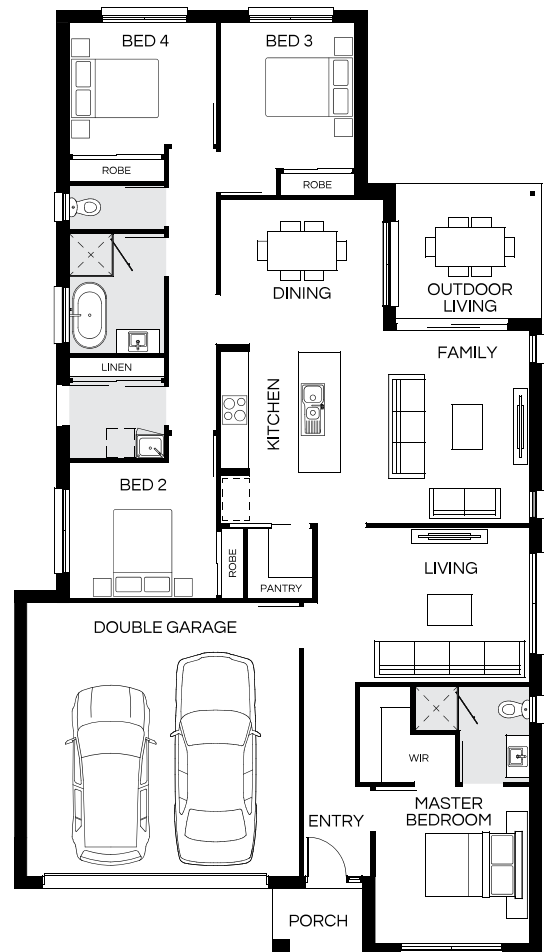


Facade image may depict features such as landscaping, furniture, window treatments, lighting and colours which are not included in the package price or which are not available from Coral Homes.

Lot 617 Columbus Road, Gillieston Heights | The Loxford Estate

### House & Land Package Inclusions

- ✓ Designer Inclusions Promotion
- ✓ Site Costs Allowance
- ✓ Caesarstone benchtops to kitchen, bathroom and ensuite
- ✓ 900mm European designed stainless steel kitchen appliances
- ✓ Quality bathroom tapware, baths and frameless mirrors
- ✓ Flooring Essentials
- ✓ Steel frame and sheet roof
- ✓ Integrated concrete slab to Outdoor Living Area and Porch
- ✓ Flyscreens to windows and sliding doors
- ✓ NBN Package
- ✓ Council fees included
- ✓ BASIX allowance



**Angela Workman**

0461 445 620

a.workman@coralhomes.com.au

# CORAL HOMES

Facade image may depict features such as landscaping, timber decking, furniture, window treatments and lighting which are not included in the package price or which are not available from Coral Homes. Floorplan is indicative only, conceptual in nature and subject to change. Floorplan may depict fixtures, fittings, features, finishes, inclusions, furnishings, vehicles and/or other products which are not included in the house design, not included in the package price and/or not available from Coral Homes. \*Price shown is based on Coral homes Newcastle / Central Coast region price list dated 01-07-2025. Land price at the time of printing is \$369,000. Price shown does not include stamp duty, registration fees, additional amounts payable in respect of variations to the house design requested by the buyer or any other incidental fees associated with the acquisition of the land and home. Build price will remain valid until September 2026. Plan is subject to approval by the Principal Developer and Local Authorities. Additional costs may apply for bushfire, acoustics, N3, easements or additional covenant requirements and retaining walls. Coral Homes reserves the right to withdraw this package at any time, prior to entry into a contract, without notice. QBCC 50792/1014053, OFT NSW 62084C, BLD260339