

HOUSE & LAND PACKAGE

**\$1000
DEPOSIT**
Secure your
package today



2024 WINNER
Campaign of the Year
Builder | NSW & ACT
Annual REA Excellence Awards



The Loxford

Whitehaven 32 Mk1 Design with Mona Vale Facade

\$999,900

5 3.5 2

Lot 202 Hampstead Circuit,
The Loxford Estate,
Maitland NSW 2320 Australia

House size 296.90 m²

House price \$575,900

Land size 671.3 m²

Land price \$424,000

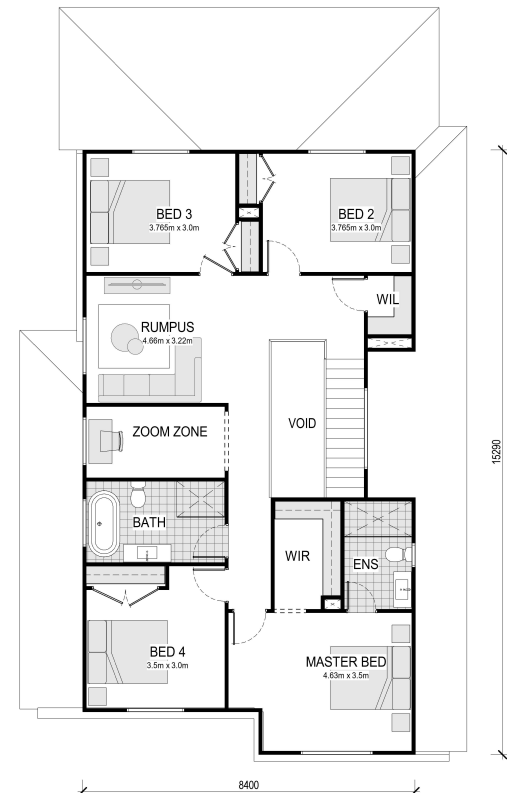
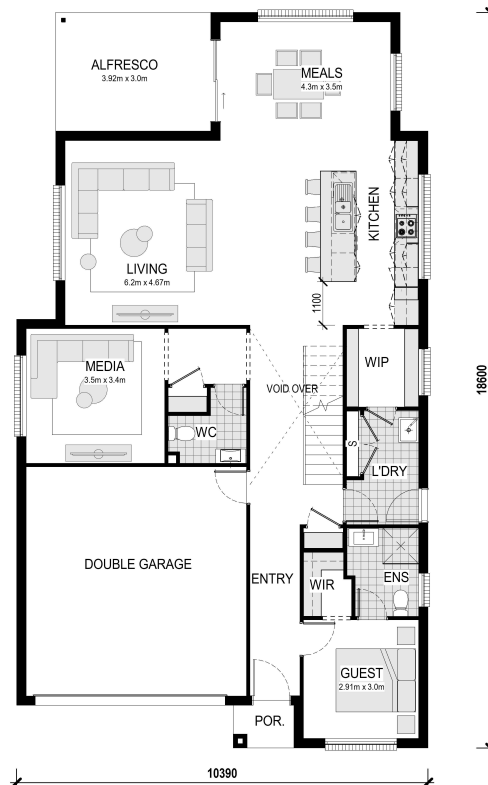
BENCHMARK INCLUSIONS

- CONNECT site costs & service connections
- Ducted air-conditioning
- 20mm stone tops to kitchen & vanities
- Semi-frameless showerscreens to main & master bathrooms
- Free-standing bath
- Westinghouse 900mm Electric cooktop & oven
- Westinghouse S/S rangehood & dishwasher
- Sarking to underside of tiled roof
- 7 Star BASIX*
- 2590mm ceiling height to ground floor
- Floor coverings – laminate & carpet
- 25 downlights
- Taubmans 3-coat paint system
- Automatic sectional garage door

Also includes:

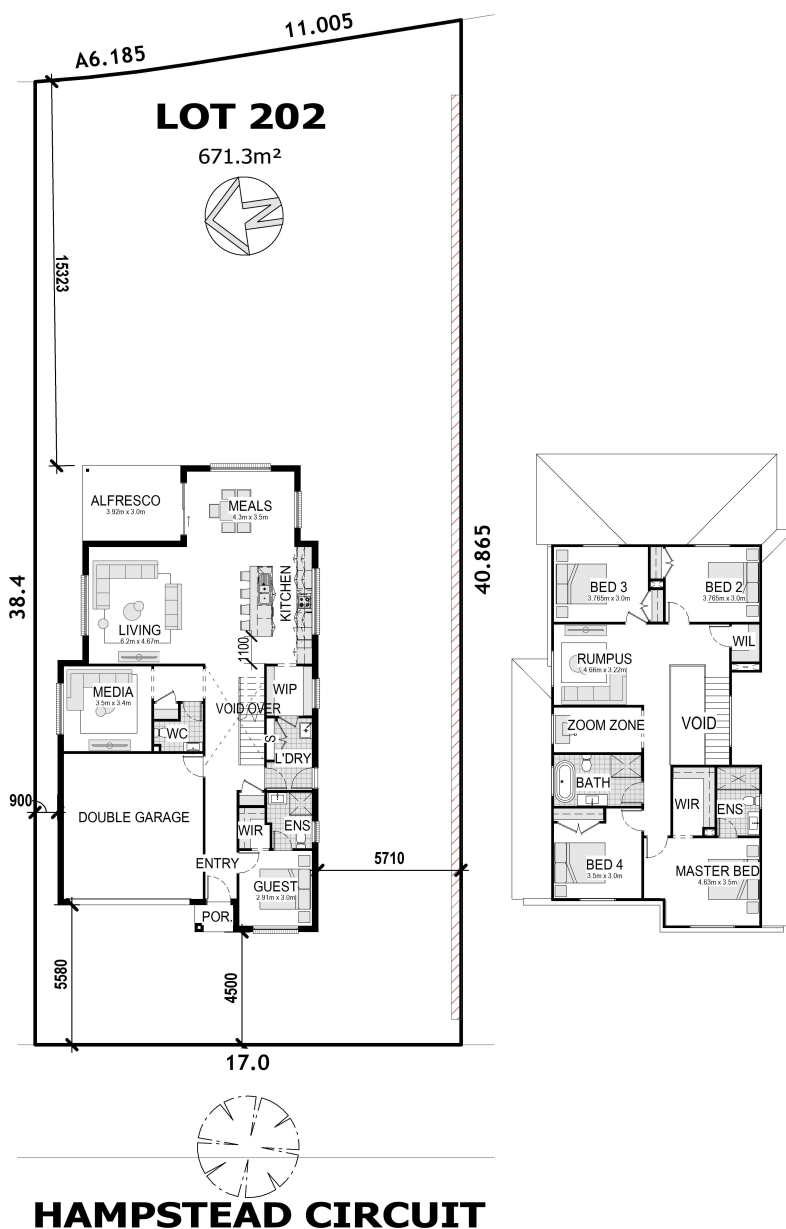
- Coloured Concrete driveway & path
- Grate Drain

* The advertised price includes the discount offered in the current promotion



THE PROPOSED SITING OF YOUR NEW BELLRIVER HOME

CESSNOCK ROAD



Note: This is a preliminary siting and is subject to a clear copy of title and approval of the builder. This siting is subject to developer approval, SEPP (state building regulations) and council requirements (if required). All packages are subject to a contour survey, a soil test & a final BASIX assessment.

*Terms & Conditions: The advertised package price is based on a standard home, standard facade, and the developer's initial forecast registration date. Photographs, facades, renders, and other pictures displayed in this brochure are for illustrative purposes only and may show a facade, landscaping, fixtures, fittings or finishes that are not inclusive of this package, and maybe available at an additional cost to the client. The advertised price includes the discount offered in the current promotion. For a full list of Benchmark inclusions, please refer to the Benchmark Inclusions booklet. The package provided is based on Bell River Homes' preliminary/preferred siting and preliminary developer land information currently available. Bell River Homes reserves the right to change specifications, prices & withdraw offers without notice. Variations to land size and location of services, including but not limited to the specifications listed within the Section 88B instrument for the property, may require amendments to the floor plan or house design, which will be at an additional cost. The site start date is subject to third-party factors, including but not limited to land registration, quantity and type of requested client variations, relevant authority approvals, and the acceptance of tender and contract with Bell River Homes. Bell River Homes' Sale terms and conditions apply, and full details of these are available from all Bell River Homes Display Centres. Please contact a Bell River Homes consultant for further information. Bell River Homes Builders Licence Number is 61247C. This package price is based on the July 2025 price list.