



House & Land

Evoked 184N - Newport Facade

\$698,905*



Home Size: 184.01m² | Lot Size: 476m² | 14m x 34m Lot

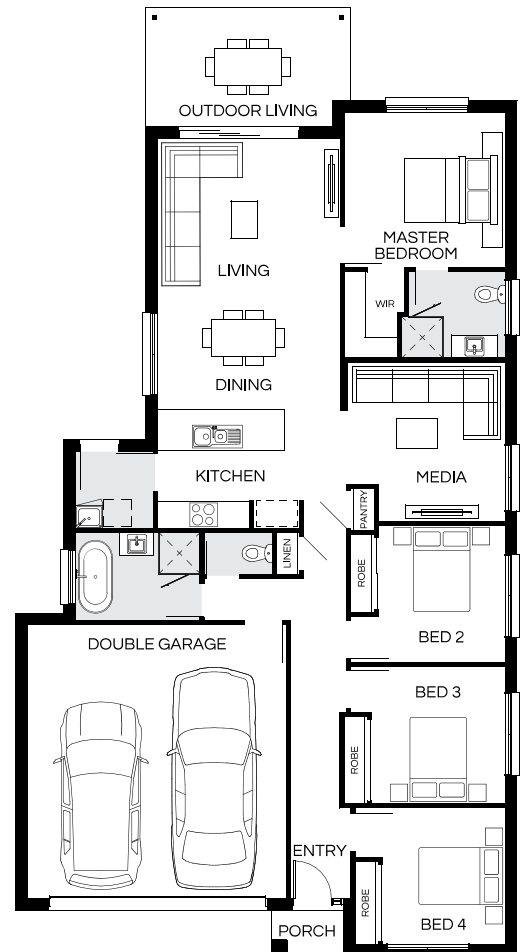
4 2 2 2

Facade image may depict features such as landscaping, furniture, window treatments, lighting and colours which are not included in the package price or which are not available from Coral Homes.

Lot 720 Deighton Road, Gillieston Heights | The Loxford Estate

House & Land Package Inclusions

- ✓ Designer Inclusions Promotion
- ✓ Fixed price site costs
- ✓ Caesarstone benchtops to kitchen, bathroom and ensuite
- ✓ European designed stainless steel kitchen appliances
- ✓ Quality bathroom tapware, baths and frameless mirrors
- ✓ Semi-frameless shower screen to bathroom and ensuite
- ✓ Steel Frame and Sheet Roof
- ✓ Carpet and Tiling
- ✓ Standard Council Fees
- ✓ NBN Package
- ✓ Integrated Slab to Outdoor Area
- ✓ BASIX Allowance
- ✓ Price Lock to cover late-2026 land registration



The Loxford

**CORAL
HOMES**

Facade image may depict features such as landscaping, timber decking, furniture, window treatments and lighting which are not included in the package price or which are not available from Coral Homes. Floorplan is indicative only, conceptual in nature and subject to change. Floorplan may depict fixtures, fittings, features, finishes, inclusions, furnishings, vehicles and/or other products which are not included in the house design, not included in the package price and/or not available from Coral Homes. *Price shown is based on Coral homes Newcastle / Central Coast region price list dated 04-08-2025. Land price at the time of printing is \$350,000. Price shown does not include stamp duty, registration fees, additional amounts payable in respect of variations to the house design requested by the buyer or any other incidental fees associated with the acquisition of the land and home. Plan is subject to approval by the Principal Developer and Local Authorities. Additional costs may apply for bushfire, acoustics, N3, easements or additional covenant requirements and retaining walls. Coral Homes reserves the right to withdraw this package at any time, prior to entry into a contract, without notice. QBCC 50792/1014053, OFT NSW 62084C, BLD260339.