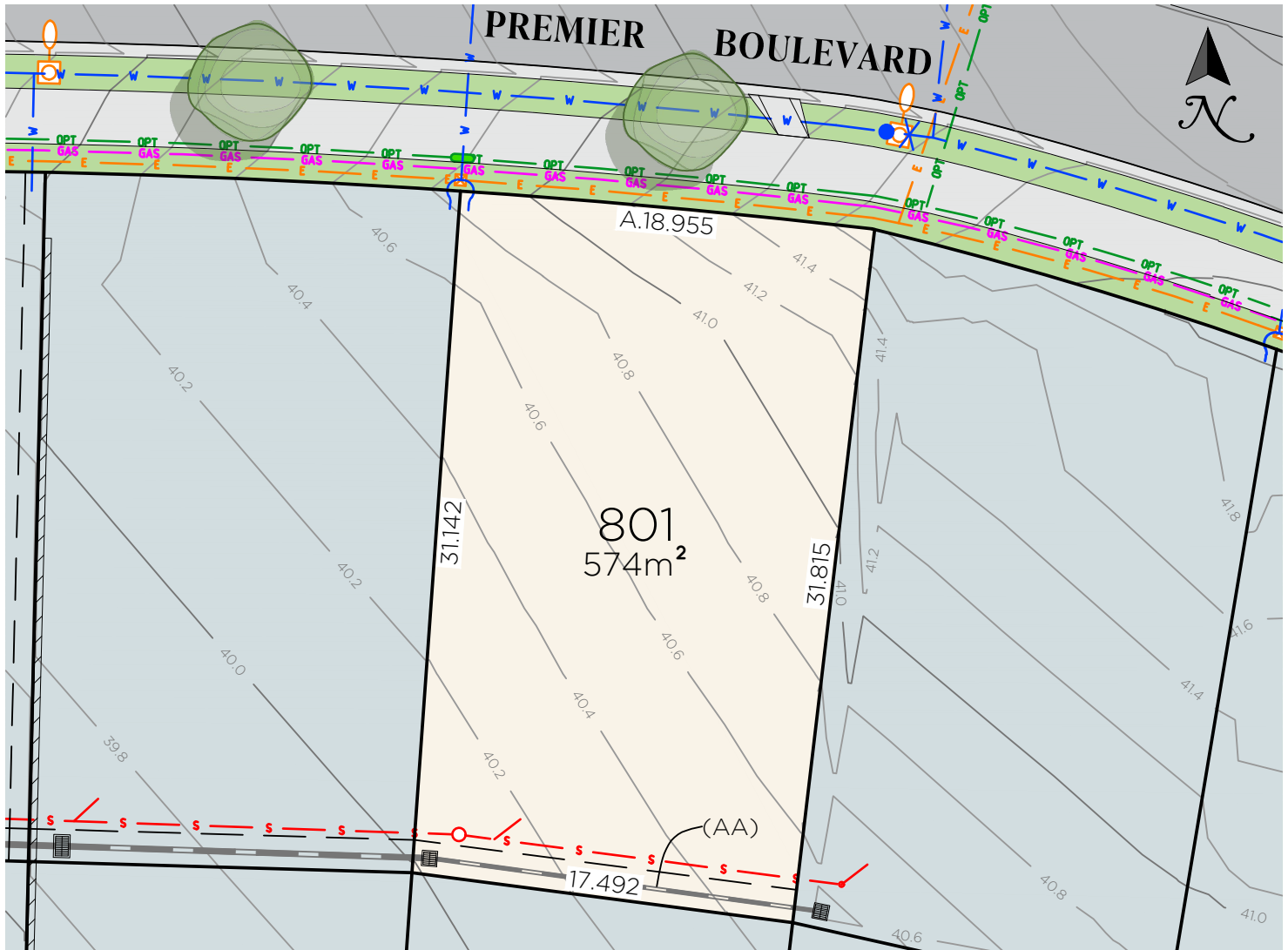




The Loxford

801

Premier Boulevard
Gillieston Heights



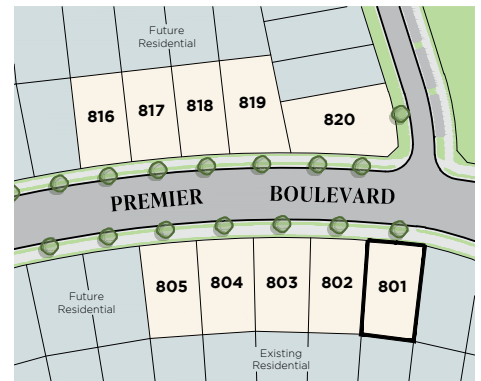
LEGEND

- s — Sewer main
- Sewer structure
- w — Water main
- Water hydrant
- X Water stop valve
- e — Electricity services
- Street light
- opt — Fibre optic comms
- Fibre optic comms pit
- gas — Gas
- ▨ Retaining wall
- Design surface contour
- Stormwater pipe
- Stormwater lintel

(AA) EASEMENT TO DRAIN WATER 1.5 WIDE

NOTES:

1. Contours are based on finished design levels and are subject to construction and Council certification and therefore should not be considered as final or as-built.
2. Location of utility services including but not limited to power, water, sewer, communications and gas are subject to construction and supply authority certification and therefore should not be considered as final or as-built.
3. Survey information such as boundary dimensions and areas, easements etc are subject to final survey. Purchasers should refer to the deposited plan and 88B instrument contained in the contract for sale of land for further detailed information.
4. Bushfire and geotechnical classification are provided for convenience. Purchasers should refer to referenced detail specialist reports.
5. This preliminary site analysis plan has been collated from various sources of design information and is provided for convenience to assist purchasers in obtaining quotations/tenders for dwelling construction.
6. This document does not form part of the contract of sale of the land.
7. Anticipated site classification is H2 or better (to be confirmed at completion of construction).



VERSION: A	SCALE: 1:300 (A4)	PREPARED BY:
COMMENT: INITIAL ISSUE		IGHVIEW PARTNERS
DATE: 14 NOVEMBER 2025		

THELOXFORD.COM.AU



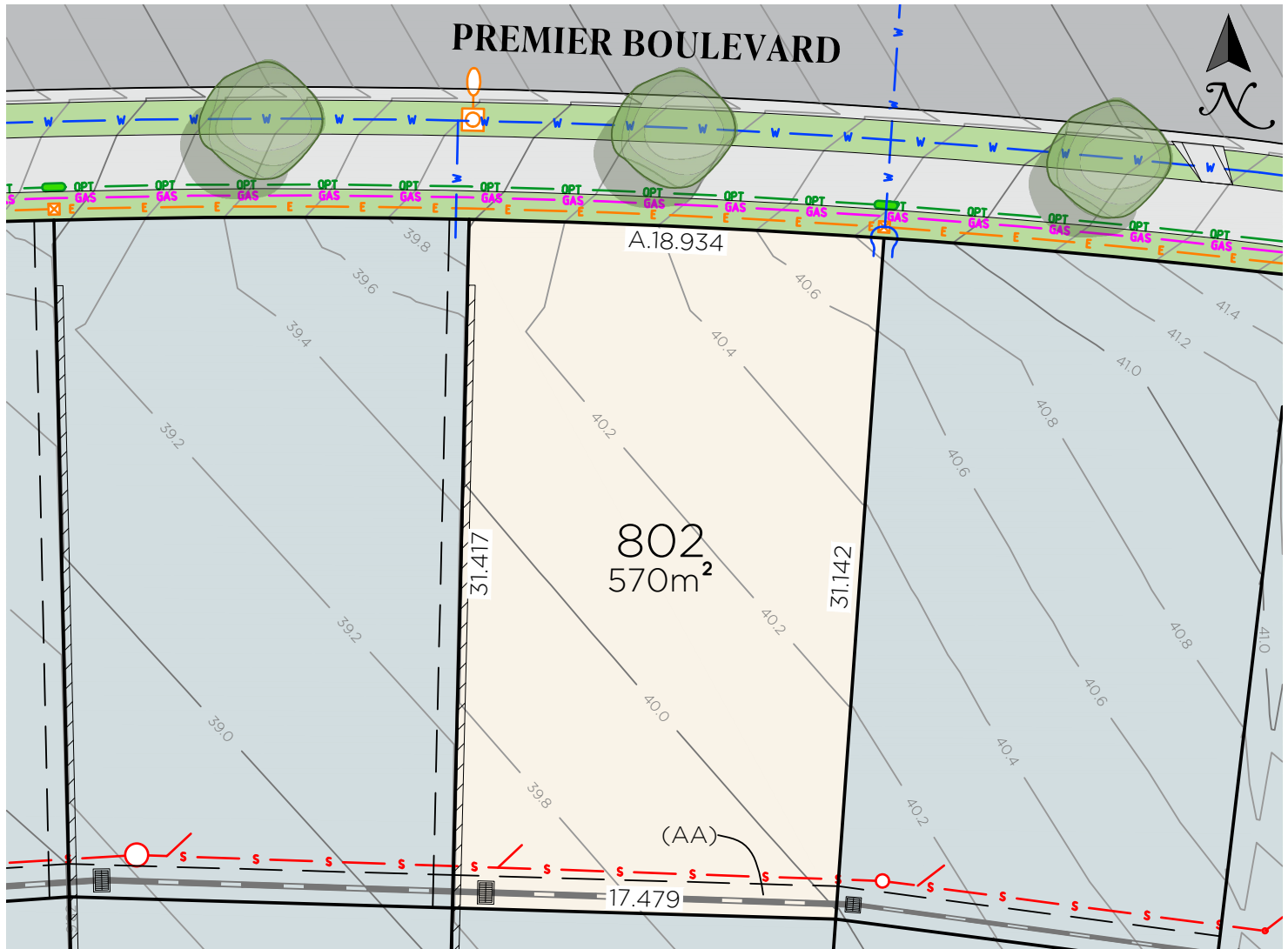
A QUALITY
MCCLOY
GROUP
PROJECT



The Loxford

802

Premier Boulevard
Gillieston Heights



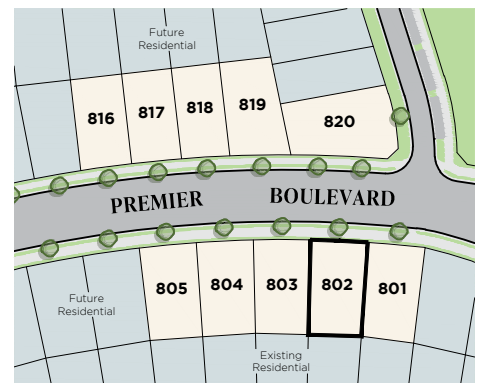
LEGEND

- s — Sewer main
- Sewer structure
- w — Water main
- Water hydrant
- X Water stop valve
- e — Electricity services
- Street light
- X Electrical pillar
- opt — Fibre optic comms
- Fibre optic comms pit
- gas — Gas
- ▨ Retaining wall
- Design surface contour
- Stormwater pipe
- Stormwater lintel

(AA) EASEMENT TO DRAIN WATER 1.5 WIDE

NOTES:

1. Contours are based on finished design levels and are subject to construction and Council certification and therefore should not be considered as final or as-built.
2. Location of utility services including but not limited to power, water, sewer, communications and gas are subject to construction and supply authority certification and therefore should not be considered as final or as-built.
3. Survey information such as boundary dimensions and areas, easements etc are subject to final survey. Purchasers should refer to the deposited plan and 88B instrument contained in the contract for sale of land for further detailed information.
4. Bushfire and geotechnical classification are provided for convenience. Purchasers should refer to referenced detail specialist reports.
5. This preliminary site analysis plan has been collated from various sources of design information and is provided for convenience to assist purchasers in obtaining quotations/tenders for dwelling construction.
6. This document does not form part of the contract of sale of the land.
7. Anticipated site classification is H2 or better (to be confirmed at completion of construction).



VERSION: A	SCALE: 1:300 (A4)	PREPARED BY:
COMMENT: INITIAL ISSUE		IGHVIEW PARTNERS
DATE: 14 NOVEMBER 2025		

THELOXFORD.COM.AU



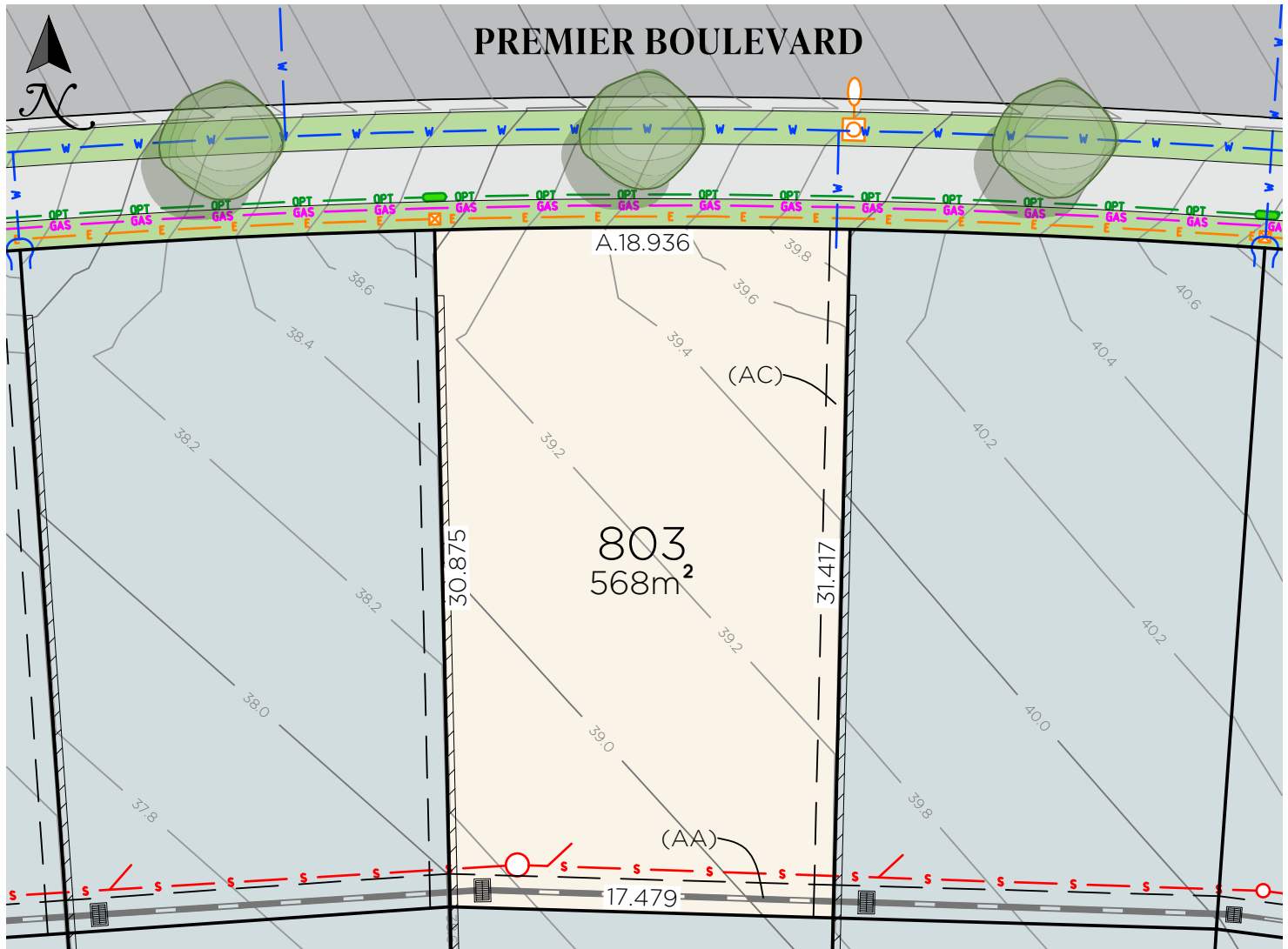
A QUALITY
MCCLOY
GROUP
PROJECT



The Loxford

803

Premier Boulevard
Gillieston Heights



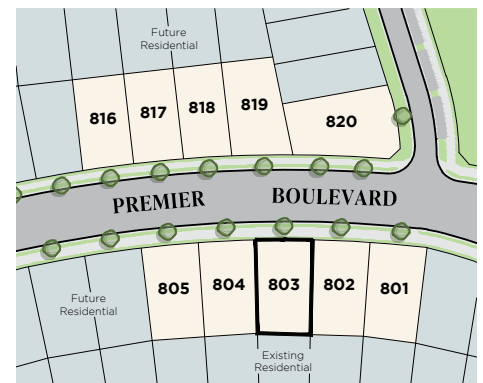
LEGEND

- s — Sewer main
- Sewer structure
- w — Water main
- Water hydrant
- ✕ Water stop valve
- e — Electricity services
- Street light
- ✕ Electrical pillar
- opt — Fibre optic comms
- Fibre optic comms pit
- gas — Gas
- ▨ Retaining wall
- Design surface contour
- Stormwater pipe
- Stormwater lintel

(AA) EASEMENT TO DRAIN WATER 1.5 WIDE
(AC) EASEMENT FOR SUPPORT OF
RETAINING WALL 0.9 WIDE

NOTES:

1. Contours are based on finished design levels and are subject to construction and Council certification and therefore should not be considered as final or as-built.
2. Location of utility services including but not limited to power, water, sewer, communications and gas are subject to construction and supply authority certification and therefore should not be considered as final or as-built.
3. Survey information such as boundary dimensions and areas, easements etc are subject to final survey. Purchasers should refer to the deposited plan and 88B instrument contained in the contract for sale of land for further detailed information.
4. Bushfire and geotechnical classification are provided for convenience. Purchasers should refer to referenced detail specialist reports.
5. This preliminary site analysis plan has been collated from various sources of design information and is provided for convenience to assist purchasers in obtaining quotations/tenders for dwelling construction.
6. This document does not form part of the contract of sale of the land.
7. Anticipated site classification is H2 or better (to be confirmed at completion of construction).



VERSION: A	SCALE: 1:300 (A4)	PREPARED BY:
COMMENT: INITIAL ISSUE		HIGHVIEW PARTNERS
DATE: 14 NOVEMBER 2025		

THELOXFORD.COM.AU



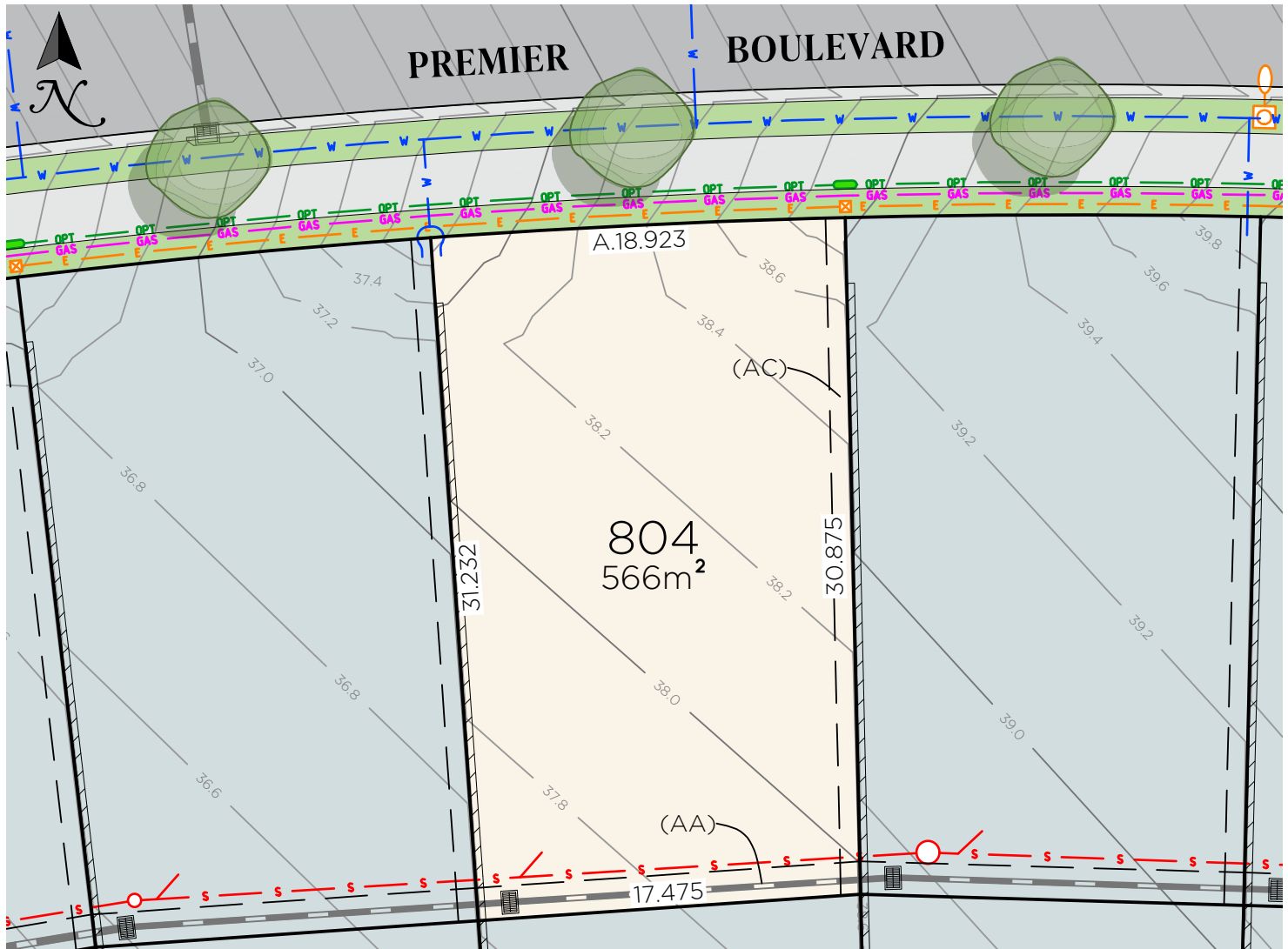
A QUALITY
MCCLOY
GROUP
PROJECT



The Loxford

804

Premier Boulevard
Gillieston Heights



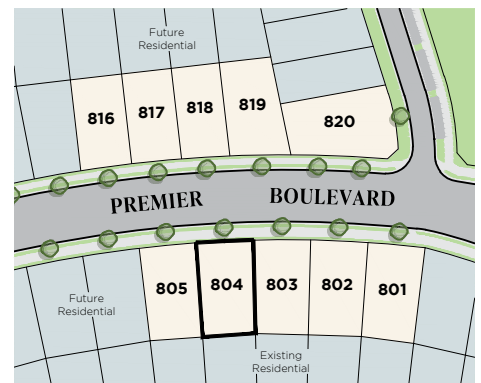
LEGEND

- S — Sewer main
- Sewer structure
- W — Water main
- Water hydrant
- X Water stop valve
- E — Electricity services
- Street light
- X Electrical pillar
- OPT — Fibre optic comms
- Fibre optic comms pit
- GAS — Gas
- ▨ Retaining wall
- Design surface contour
- Stormwater pipe
- Stormwater lintel

(AA) EASEMENT TO DRAIN WATER 1.5 WIDE
(AC) EASEMENT FOR SUPPORT OF
RETAINING WALL 0.9 WIDE

NOTES:

1. Contours are based on finished design levels and are subject to construction and Council certification and therefore should not be considered as final or as-built.
2. Location of utility services including but not limited to power, water, sewer, communications and gas are subject to construction and supply authority certification and therefore should not be considered as final or as-built.
3. Survey information such as boundary dimensions and areas, easements etc are subject to final survey. Purchasers should refer to the deposited plan and 88B instrument contained in the contract for sale of land for further detailed information.
4. Bushfire and geotechnical classification are provided for convenience. Purchasers should refer to referenced detail specialist reports.
5. This preliminary site analysis plan has been collated from various sources of design information and is provided for convenience to assist purchasers in obtaining quotations/tenders for dwelling construction.
6. This document does not form part of the contract of sale of the land.
7. Anticipated site classification is H2 or better (to be confirmed at completion of construction).



VERSION: A	SCALE: 1:300 (A4)	PREPARED BY:
COMMENT: INITIAL ISSUE		HIGHVIEW PARTNERS
DATE: 14 NOVEMBER 2025		

THELOXFORD.COM.AU



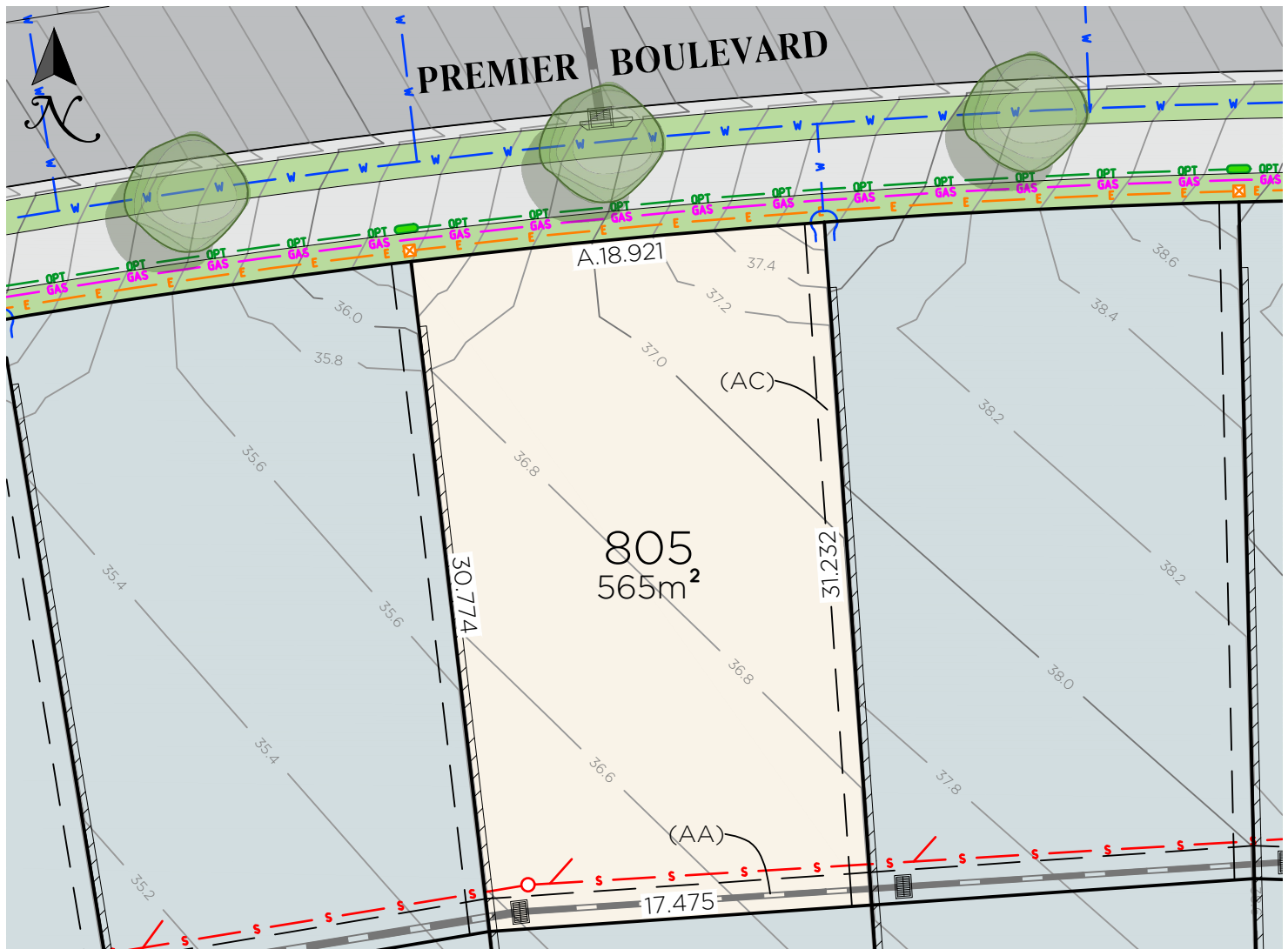
A QUALITY
MCCLOY
GROUP
PROJECT



The Loxford

805

Premier Boulevard
Gillieston Heights



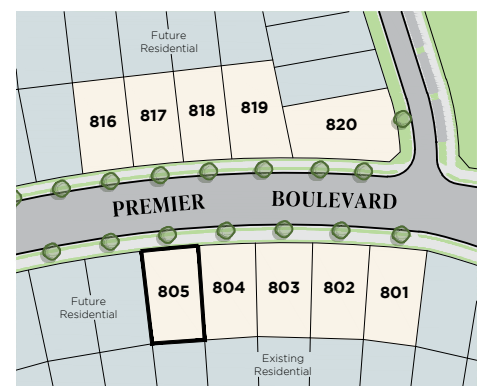
LEGEND

- S Sewer main
- O Sewer structure
- W Water main
- W Water hydrant
- X Water stop valve
- E Electricity services
- Street light
- Electrical pillar
- OPT Fibre optic comms
- Fibre optic comms pit
- GAS Gas
- Retaining wall
- Design surface contour
- Stormwater pipe
- Stormwater lintel

(AA) EASEMENT TO DRAIN WATER 1.5 WIDE
(AC) EASEMENT FOR SUPPORT OF
RETAINING WALL 0.9 WIDE

NOTES:

- Contours are based on finished design levels and are subject to construction and Council certification and therefore should not be considered as final or as-built.
- Location of utility services including but not limited to power, water, sewer, communications and gas are subject to construction and supply authority certification and therefore should not be considered as final or as-built.
- Survey information such as boundary dimensions and areas, easements etc are subject to final survey. Purchasers should refer to the deposited plan and 88B instrument contained in the contract for sale of land for further detailed information.
- Bushfire and geotechnical classification are provided for convenience. Purchasers should refer to referenced detail specialist reports.
- This preliminary site analysis plan has been collated from various sources of design information and is provided for convenience to assist purchasers in obtaining quotations/tenders for dwelling construction.
- This document does not form part of the contract of sale of the land.
- Anticipated site classification is H2 or better (to be confirmed at completion of construction).



VERSION: A	SCALE: 1:300 (A4)	PREPARED BY:
COMMENT: INITIAL ISSUE		HIGHVIEW PARTNERS
DATE: 14 NOVEMBER 2025		

THELOXFORD.COM.AU



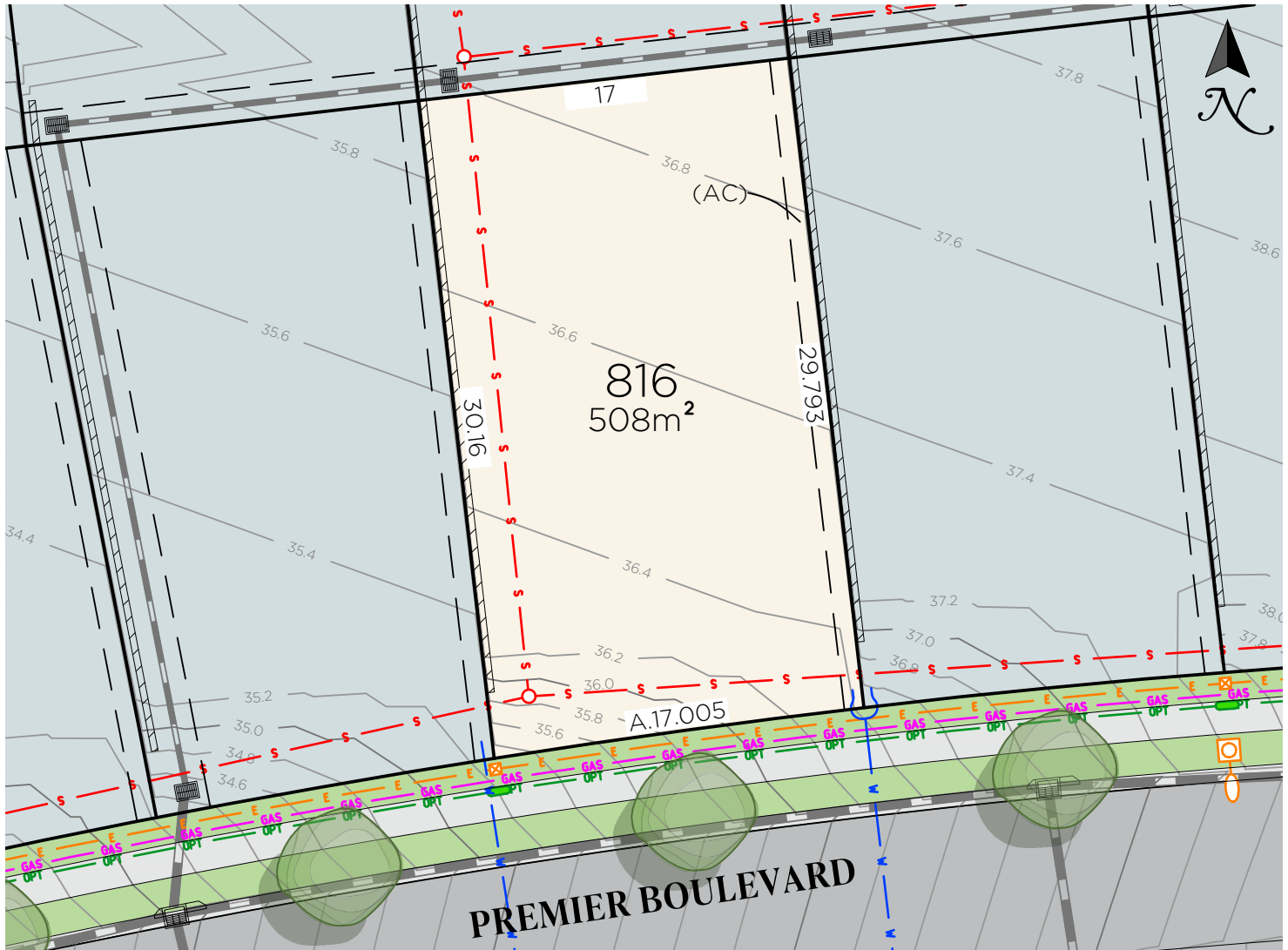
A QUALITY
MCCLOY
GROUP
PROJECT



The Loxford

816

Premier Boulevard
Gillieston Heights



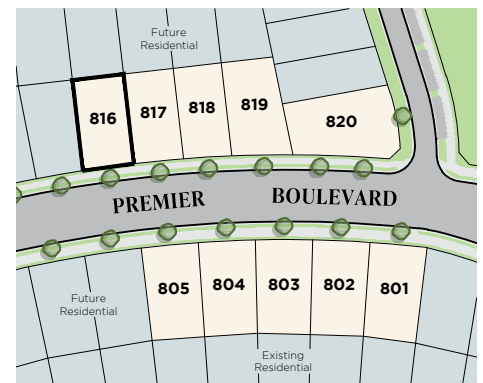
LEGEND

- S — Sewer main
- Sewer structure
- W — Water main
- Water hydrant
- X Water stop valve
- E — Electricity services
- Street light
- X Electrical pillar
- OPT — Fibre optic comms
- Fibre optic comms pit
- GAS — Gas
- ▨ Retaining wall
- Design surface contour
- Stormwater pipe
- Stormwater lintel

(AC) EASEMENT FOR SUPPORT OF
RETAINING WALL 0.9 WIDE

NOTES:

1. Contours are based on finished design levels and are subject to construction and Council certification and therefore should not be considered as final or as-built.
2. Location of utility services including but not limited to power, water, sewer, communications and gas are subject to construction and supply authority certification and therefore should not be considered as final or as-built.
3. Survey information such as boundary dimensions and areas, easements etc are subject to final survey. Purchasers should refer to the deposited plan and 88B instrument contained in the contract for sale of land for further detailed information.
4. Bushfire and geotechnical classification are provided for convenience. Purchasers should refer to referenced detail specialist reports.
5. This preliminary site analysis plan has been collated from various sources of design information and is provided for convenience to assist purchasers in obtaining quotations/tenders for dwelling construction.
6. This document does not form part of the contract of sale of the land.
7. Anticipated site classification is H2 or better (to be confirmed at completion of construction).



VERSION: A	SCALE: 1:300 (A4)	PREPARED BY:
COMMENT: INITIAL ISSUE		IGHVIEW PARTNERS
DATE: 14 NOVEMBER 2025		

THELOXFORD.COM.AU



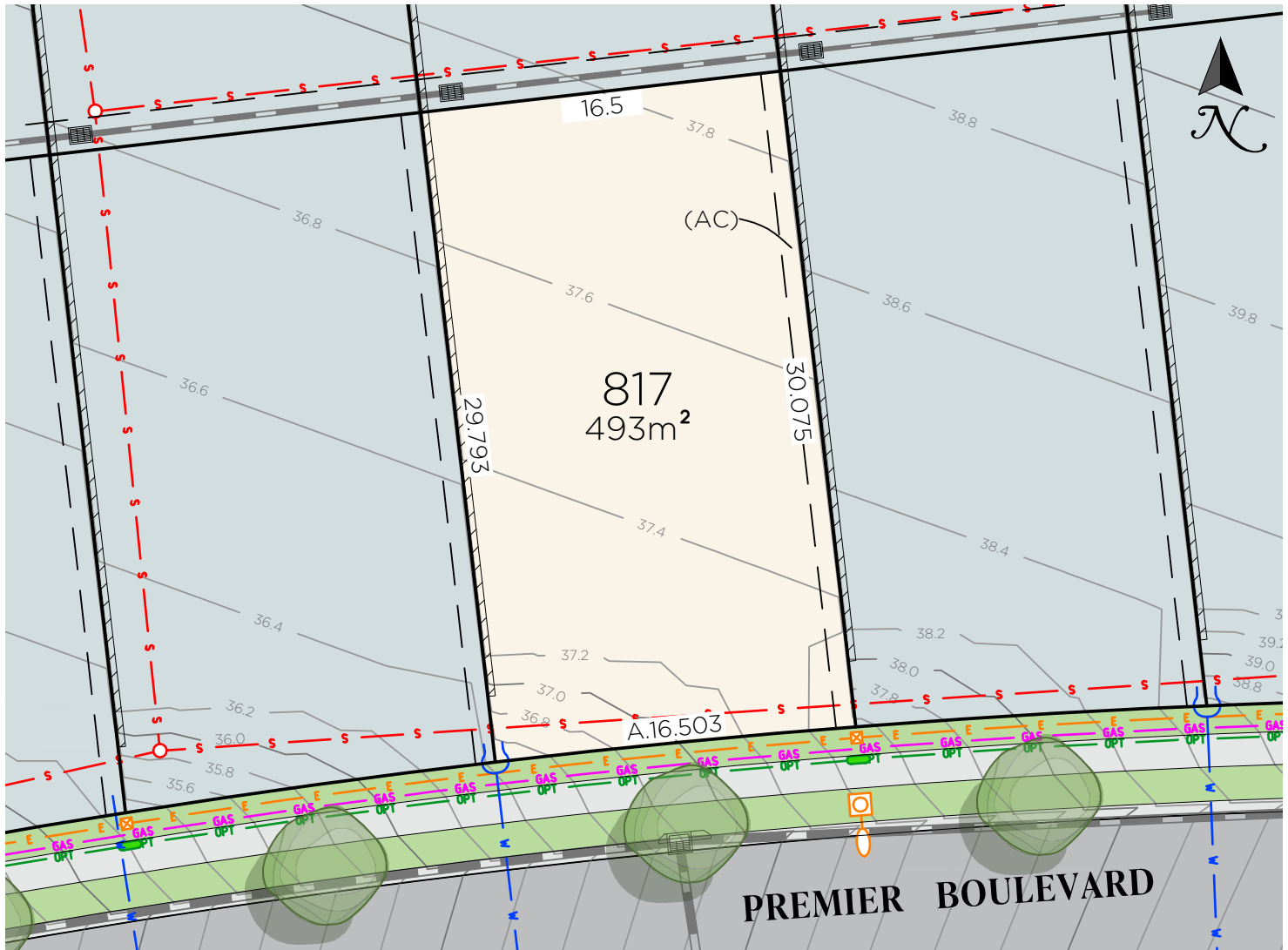
A QUALITY
MCCLOY
GROUP
PROJECT



The Loxford

817

Premier Boulevard
Gillieston Heights



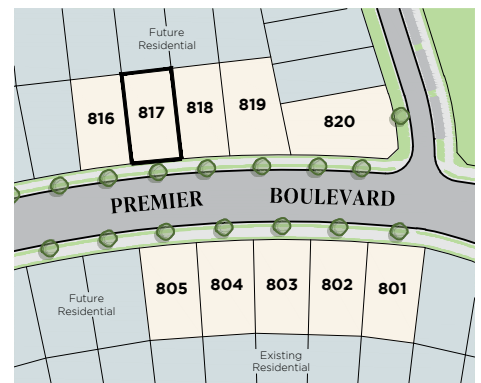
LEGEND

- S Sewer main
- O Sewer structure
- W Water main
- Water hydrant
- X Water stop valve
- E Electricity services
- Street light
- Electrical pillar
- OPT Fibre optic comms
- OPT Fibre optic comms pit
- GAS Gas
- Retaining wall
- Design surface contour
- Stormwater pipe
- Stormwater lintel

(AC) EASEMENT FOR SUPPORT OF
RETAINING WALL 0.9 WIDE

NOTES:

1. Contours are based on finished design levels and are subject to construction and Council certification and therefore should not be considered as final or as-built.
2. Location of utility services including but not limited to power, water, sewer, communications and gas are subject to construction and supply authority certification and therefore should not be considered as final or as-built.
3. Survey information such as boundary dimensions and areas, easements etc are subject to final survey. Purchasers should refer to the deposited plan and 88B instrument contained in the contract for sale of land for further detailed information.
4. Bushfire and geotechnical classification are provided for convenience. Purchasers should refer to referenced detail specialist reports.
5. This preliminary site analysis plan has been collated from various sources of design information and is provided for convenience to assist purchasers in obtaining quotations/tenders for dwelling construction.
6. This document does not form part of the contract of sale of the land.
7. Anticipated site classification is H2 or better (to be confirmed at completion of construction).



VERSION: A	SCALE: 1:300 (A4)	PREPARED BY:
COMMENT: INITIAL ISSUE		HIGHVIEW PARTNERS
DATE: 14 NOVEMBER 2025		

THELOXFORD.COM.AU



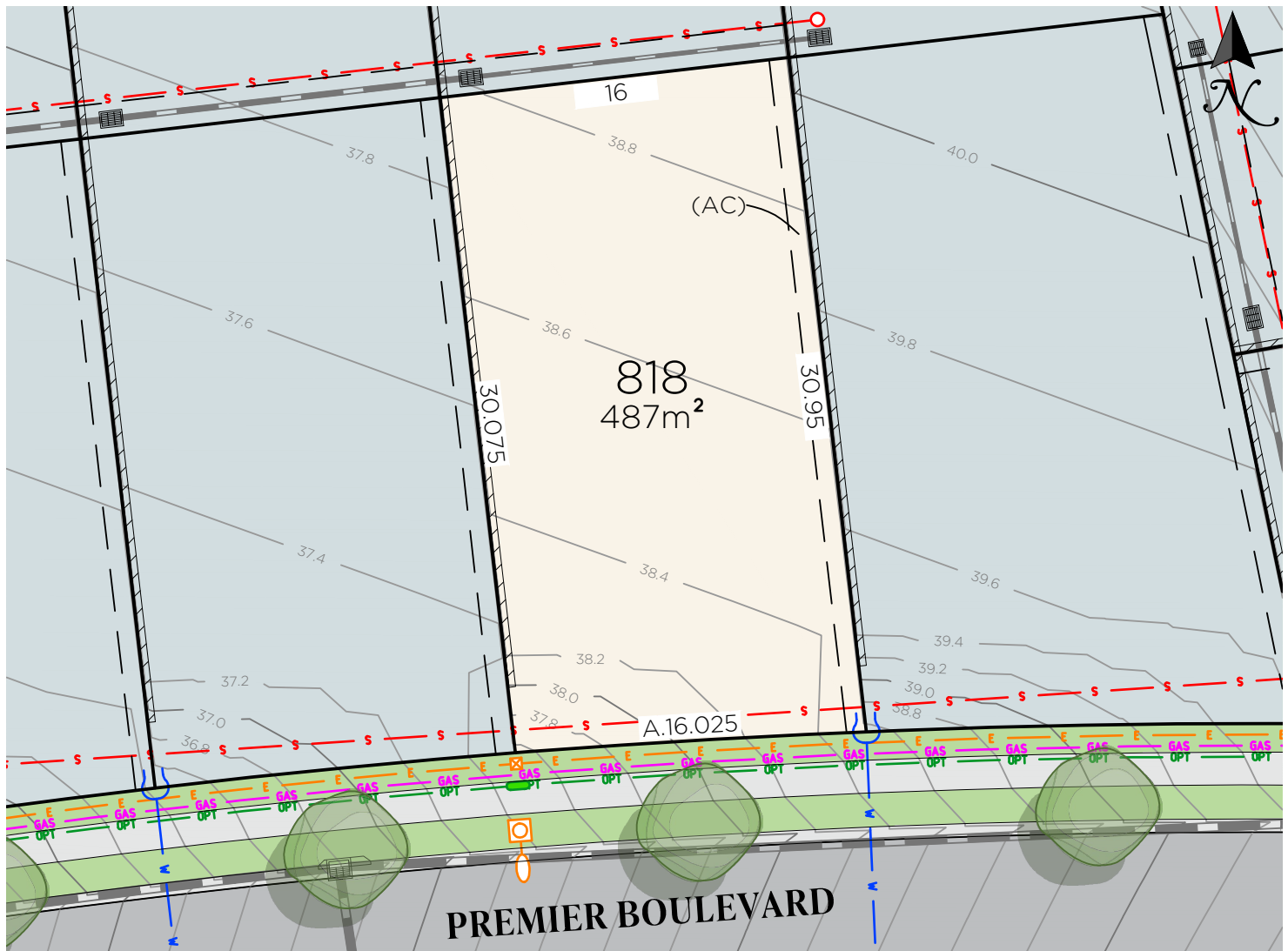
A QUALITY
MCCLOY
GROUP
PROJECT



The Loxford

818

Premier Boulevard
Gillieston Heights



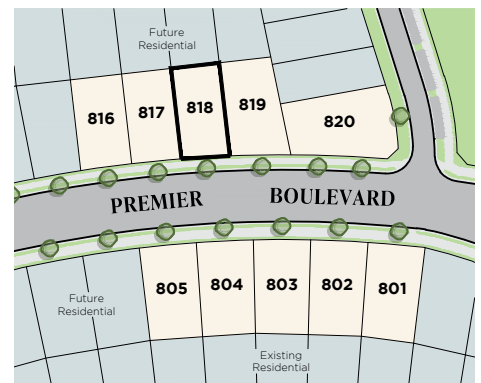
LEGEND

- S — Sewer main
- Sewer structure
- W — Water main
- Water hydrant
- X Water stop valve
- E — Electricity services
- Street light
- Electrical pillar
- OPT — Fibre optic comms
- Fibre optic comms pit
- GAS — Gas
- ▨ Retaining wall
- Design surface contour
- Stormwater pipe
- Stormwater lintel

(AC) EASEMENT FOR SUPPORT OF
RETAINING WALL 0.9 WIDE

NOTES:

1. Contours are based on finished design levels and are subject to construction and Council certification and therefore should not be considered as final or as-built.
2. Location of utility services including but not limited to power, water, sewer, communications and gas are subject to construction and supply authority certification and therefore should not be considered as final or as-built.
3. Survey information such as boundary dimensions and areas, easements etc are subject to final survey. Purchasers should refer to the deposited plan and 88B instrument contained in the contract for sale of land for further detailed information.
4. Bushfire and geotechnical classification are provided for convenience. Purchasers should refer to referenced detail specialist reports.
5. This preliminary site analysis plan has been collated from various sources of design information and is provided for convenience to assist purchasers in obtaining quotations/tenders for dwelling construction.
6. This document does not form part of the contract of sale of the land.
7. Anticipated site classification is H2 or better (to be confirmed at completion of construction).



VERSION: A	SCALE: 1:300 (A4)	PREPARED BY:
COMMENT: INITIAL ISSUE		HIGHVIEW PARTNERS
DATE: 14 NOVEMBER 2025		

THELOXFORD.COM.AU



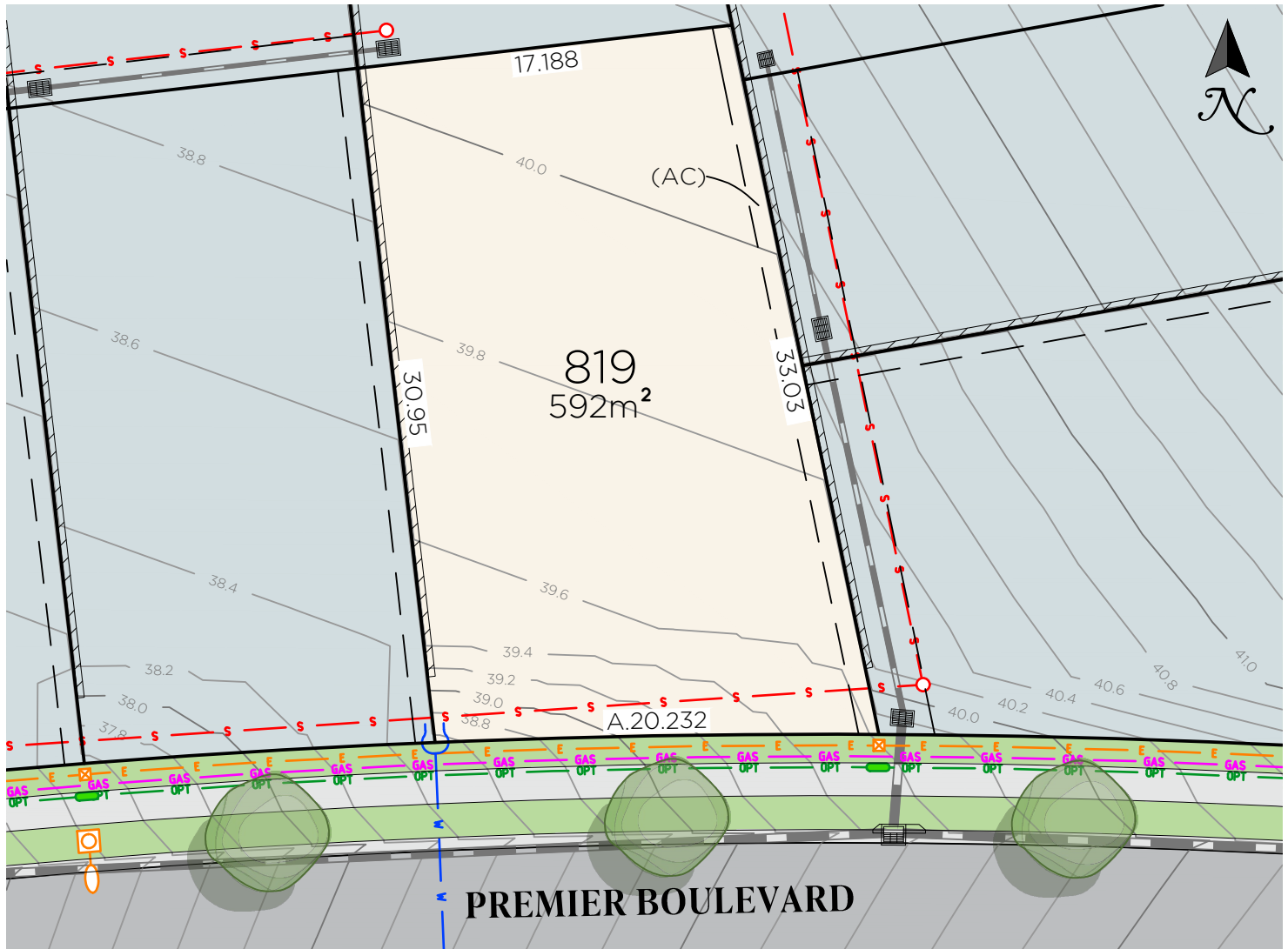
A QUALITY
MCCLOY
GROUP
PROJECT



The Loxford

819

Premier Boulevard
Gillieston Heights



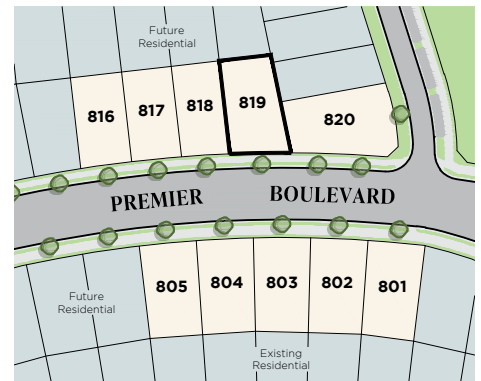
LEGEND

- S Sewer main
- O Sewer structure
- W Water main
- X Water hydrant
- Water stop valve
- E Electricity services
- Street light
- Electrical pillar
- OPT Fibre optic comms
- Fibre optic comms pit
- GAS Gas
- Retaining wall
- Design surface contour
- Stormwater pipe
- Stormwater lintel

(AC) EASEMENT FOR SUPPORT OF
RETAINING WALL 0.9 WIDE

NOTES:

1. Contours are based on finished design levels and are subject to construction and Council certification and therefore should not be considered as final or as-built.
2. Location of utility services including but not limited to power, water, sewer, communications and gas are subject to construction and supply authority certification and therefore should not be considered as final or as-built.
3. Survey information such as boundary dimensions and areas, easements etc are subject to final survey. Purchasers should refer to the deposited plan and 88B instrument contained in the contract for sale of land for further detailed information.
4. Bushfire and geotechnical classification are provided for convenience. Purchasers should refer to referenced detail specialist reports.
5. This preliminary site analysis plan has been collated from various sources of design information and is provided for convenience to assist purchasers in obtaining quotations/tenders for dwelling construction.
6. This document does not form part of the contract of sale of the land.
7. Anticipated site classification is H2 or better (to be confirmed at completion of construction).



VERSION: A	SCALE: 1:300 (A4)	PREPARED BY:
COMMENT: INITIAL ISSUE		HIGHVIEW PARTNERS
DATE: 14 NOVEMBER 2025		

THELOXFORD.COM.AU



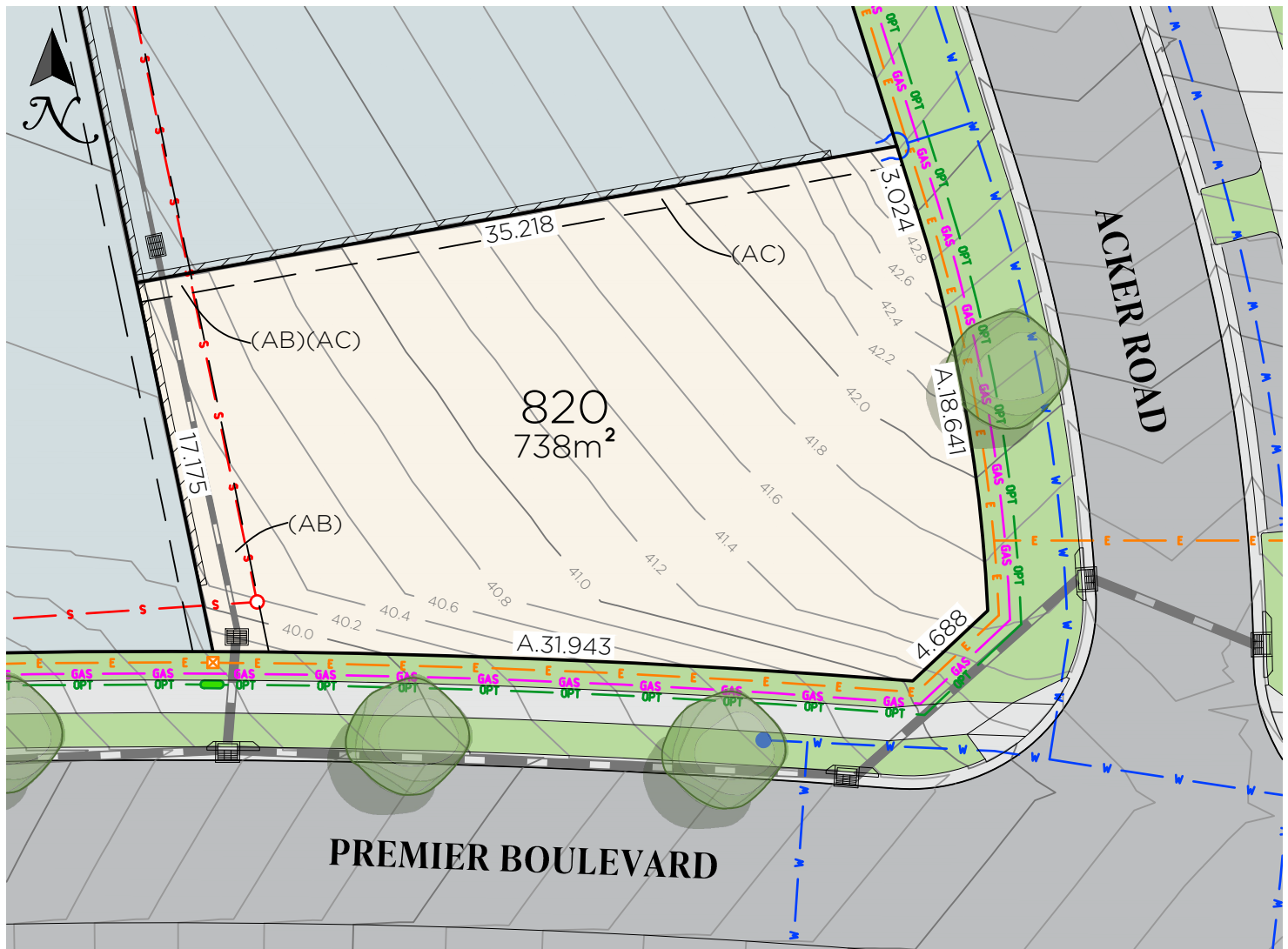
A QUALITY
MCCLOY
GROUP
PROJECT



The Loxford

820

Premier Boulevard
Gillieston Heights



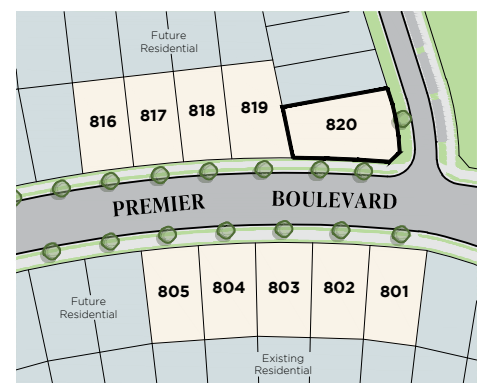
LEGEND

	Sewer main
	Sewer structure
	Water main
	Water hydrant
	Water stop valve
	Electricity services
	Street light
	Electrical pillar
	Fibre optic comms
	Fibre optic comms pit
	Gas
	Retaining wall
	Design surface contour
	Stormwater pipe
	Stormwater lintel

(AB) EASEMENT TO DRAIN WATER 2.5 WIDE
(AC) EASEMENT FOR SUPPORT OF
RETAINING WALL 0.9 WIDE

NOTES:

1. Contours are based on finished design levels and are subject to construction and Council certification and therefore should not be considered as final or as-built.
2. Location of utility services including but not limited to power, water, sewer, communications and gas are subject to construction and supply authority certification and therefore should not be considered as final or as-built.
3. Survey information such as boundary dimensions and areas, easements etc are subject to final survey. Purchasers should refer to the deposited plan and 88B instrument contained in the contract for sale of land for further detailed information.
4. Bushfire and geotechnical classification are provided for convenience. Purchasers should refer to referenced detail specialist reports.
5. This preliminary site analysis plan has been collated from various sources of design information and is provided for convenience to assist purchasers in obtaining quotations/tenders for dwelling construction.
6. This document does not form part of the contract of sale of the land.
7. Anticipated site classification is H2 or better (to be confirmed at completion of construction).



VERSION: A	SCALE: 1:300 (A4)	PREPARED BY:
COMMENT: INITIAL ISSUE		
DATE: 14 NOVEMBER 2025		

HIGHVIEW PARTNERS

THELOXFORD.COM.AU



A QUALITY
MCCLOY
GROUP
PROJECT