

# House & Land

THE LOXFORD\*



**MOJO**  
HOMES

**\$975,300\***

Land price: \$385,000

Land registration: February 2026

## NEWPORT 28 ONE

North Hampton

153 Loxford Boulevard

GILLIESTON HEIGHTS, NSW 2321



4



2



2



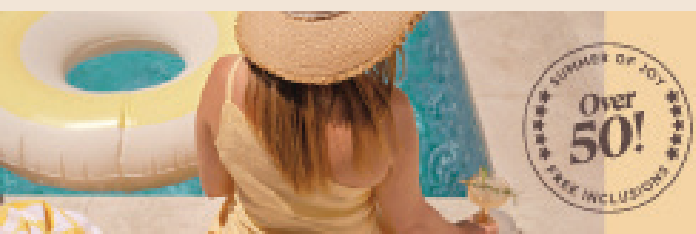
2

Lot size: 579m<sup>2</sup> | Lot width: 17.5m



### WHAT YOU GET

- M-Series inclusions
- Fixed price site costs & basix allowance
- Supaloc® steel frame & trusses
- Floor coverings throughout
- 20mm crystalline silica free benchtops to kitchen bathroom and laundry
- 900mm Haier appliances
- Fully ducted air-conditioning
- 2,550mm ground floor ceilings
- Colorbond® steel roof
- 30 downlights



**Save more with \$65,000 off  
M-Series homes\***

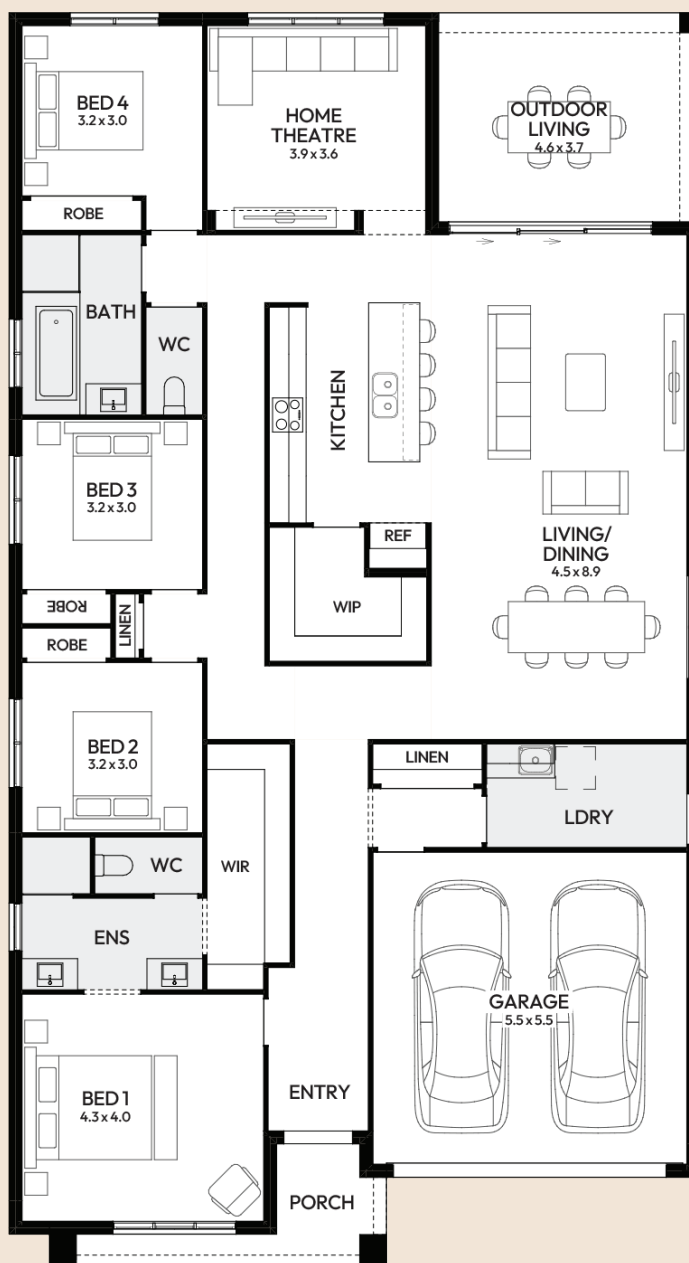
\*T&Cs apply. \$65,000 has been applied.

# House & Land

THE LOXFORD\*



**MOJO**  
HOMES



## CALL US TODAY

1300 006 656

## EMAIL US

[enquiries@mojohomes.com.au](mailto:enquiries@mojohomes.com.au)

## VISIT WEBSITE FOR MORE

[mojohomes.com.au](http://mojohomes.com.au)

MOJO Homes reserves the right to change prices or inclusions without notice. Images of facades shown are a guide only. Material finishes, dimensions and colours shown are purely an expression of the artist and subject to change depending on availability and design updates. Please refer to our current price list and specifications for facade finishes allowed in published price. For more detailed home pricing, including details about the standard inclusions and costs for pre-determined optional upgrades, please talk to one of our New Home Sales Consultants. Lot dimensions are approximate. Specific details, pricing and dimensions will be included in your contract. Mojo Homes Pty Ltd. BLN:269829C