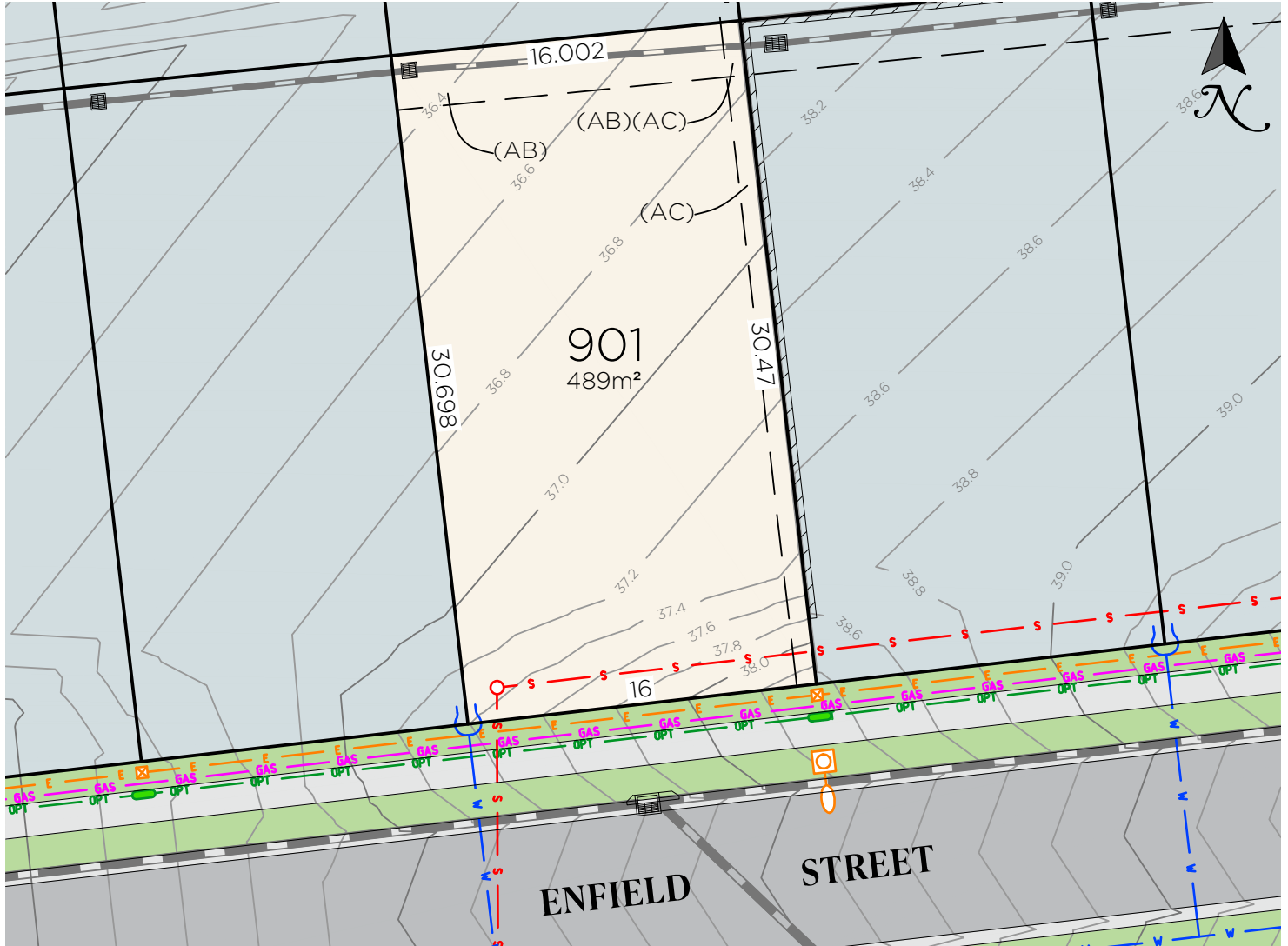




# The Loxford

## 901

Enfield Street  
Gillieston Heights



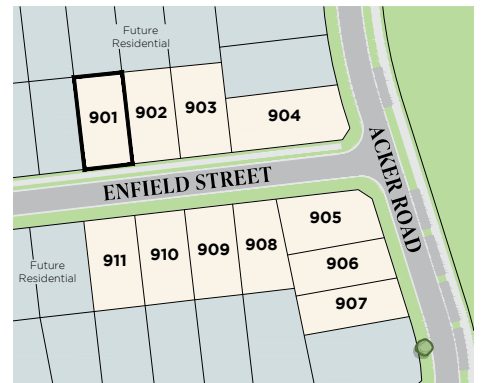
### LEGEND

- S Sewer main
- O Sewer structure
- W Water main
- Water hydrant
- X Water stop valve
- E Electricity services
- Street light
- Electrical pillar
- OPT Fibre optic comms
- Fibre optic comms pit
- GAS Gas
- Retaining wall
- Design surface contour
- Stormwater pipe
- Stormwater lintel

(AB) EASEMENT TO DRAIN WATER 2.5 WIDE  
(AC) EASEMENT FOR SUPPORT OF  
RETAINING WALL 0.9 WIDE

### NOTES:

- Contours are based on finished design levels and are subject to construction and Council certification and therefore should not be considered as final or as-built.
- Location of utility services including but not limited to power, water, sewer, communications and gas are subject to construction and supply authority certification and therefore should not be considered as final or as-built.
- Survey information such as boundary dimensions and areas, easements etc are subject to final survey. Purchasers should refer to the deposited plan and 88B instrument contained in the contract for sale of land for further detailed information.
- Bushfire and geotechnical classification are provided for convenience. Purchasers should refer to referenced detail specialist reports.
- This preliminary site analysis plan has been collated from various sources of design information and is provided for convenience to assist purchasers in obtaining quotations/tenders for dwelling construction.
- This document does not form part of the contract of sale of the land.
- Anticipated site classification is H2 or better (to be confirmed at completion of construction).



VERSION: A	SCALE: 1:300 (A4)	PREPARED BY:
COMMENT: INITIAL ISSUE		HIGHVIEW PARTNERS
DATE: 21 NOVEMBER 2025		

THELOXFORD.COM.AU



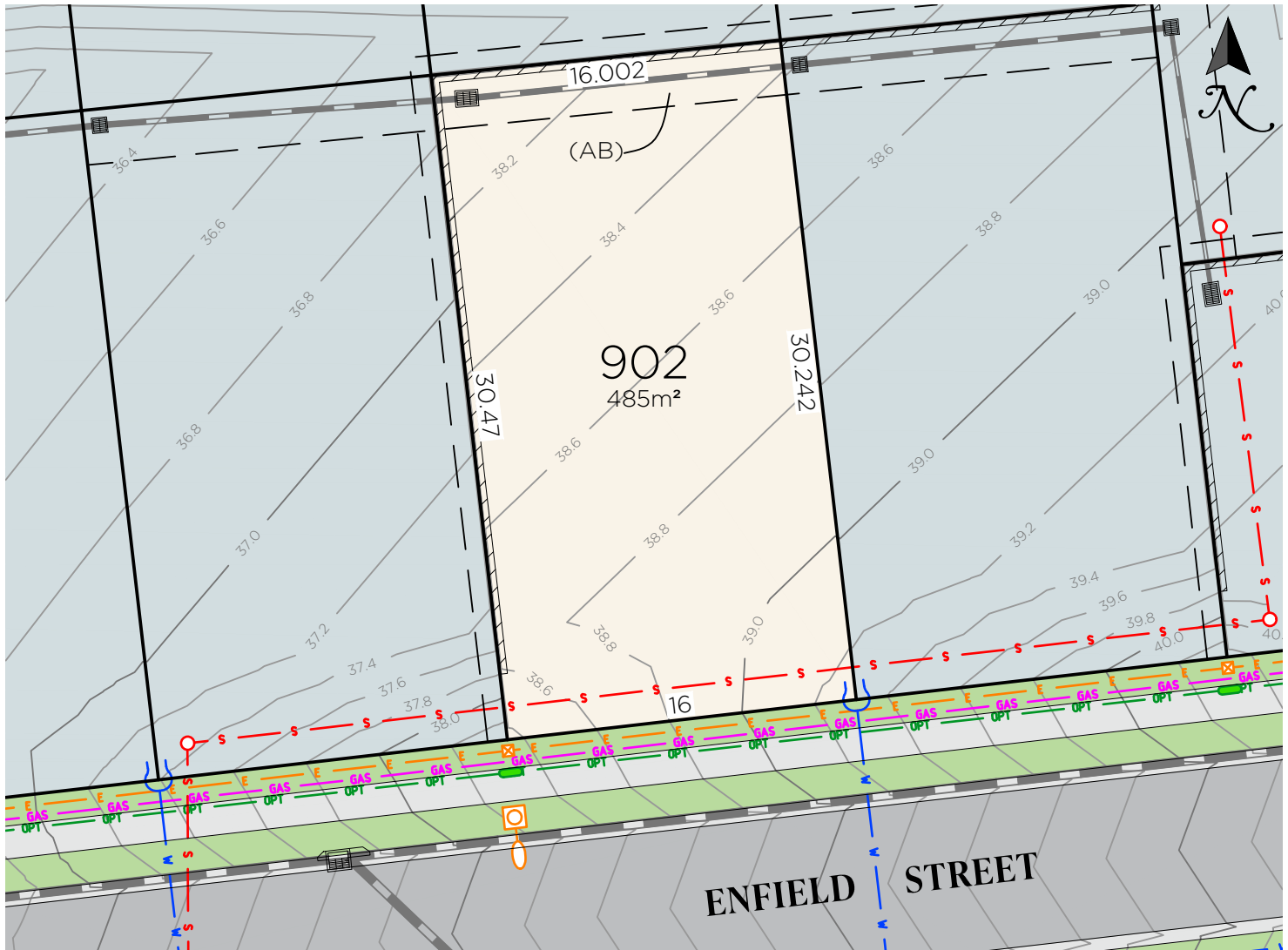
A QUALITY  
MCCLOY  
GROUP  
PROJECT



# The Loxford

## 902

Enfield Street  
Gillieston Heights



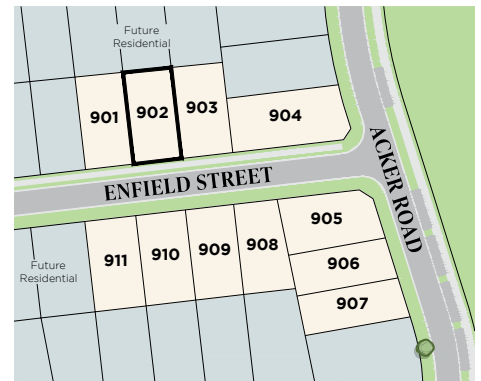
### LEGEND

- S Sewer main
- O Sewer structure
- W Water main
- Water hydrant
- X Water stop valve
- E Electricity services
- Street light
- Electrical pillar
- OPT Fibre optic comms
- Fibre optic comms pit
- GAS Gas
- Retaining wall
- Design surface contour
- Stormwater pipe
- Stormwater lintel

(AB) EASEMENT TO DRAIN WATER 2.5 WIDE

### NOTES:

- Contours are based on finished design levels and are subject to construction and Council certification and therefore should not be considered as final or as-built.
- Location of utility services including but not limited to power, water, sewer, communications and gas are subject to construction and supply authority certification and therefore should not be considered as final or as-built.
- Survey information such as boundary dimensions and areas, easements etc are subject to final survey. Purchasers should refer to the deposited plan and 88B instrument contained in the contract for sale of land for further detailed information.
- Bushfire and geotechnical classification are provided for convenience. Purchasers should refer to referenced detail specialist reports.
- This preliminary site analysis plan has been collated from various sources of design information and is provided for convenience to assist purchasers in obtaining quotations/tenders for dwelling construction.
- This document does not form part of the contract of sale of the land.
- Anticipated site classification is H2 or better (to be confirmed at completion of construction).



VERSION: A	SCALE: 1:300 (A4)	PREPARED BY:
COMMENT: INITIAL ISSUE		HIGHVIEW PARTNERS
DATE: 21 NOVEMBER 2025		

THELOXFORD.COM.AU



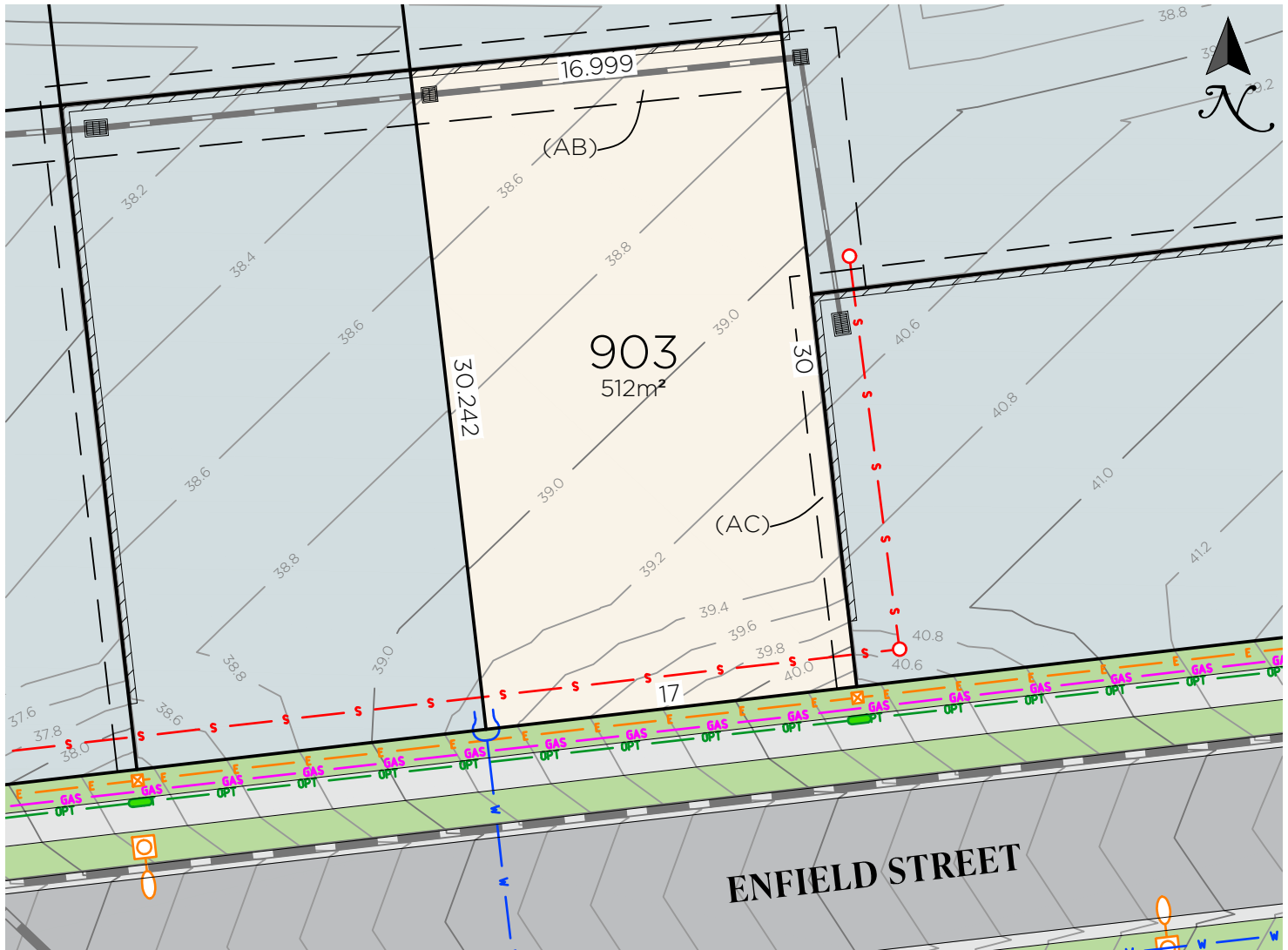
A QUALITY  
MCCLOY  
GROUP  
PROJECT



# The Loxford

## 903

Enfield Street  
Gillieston Heights



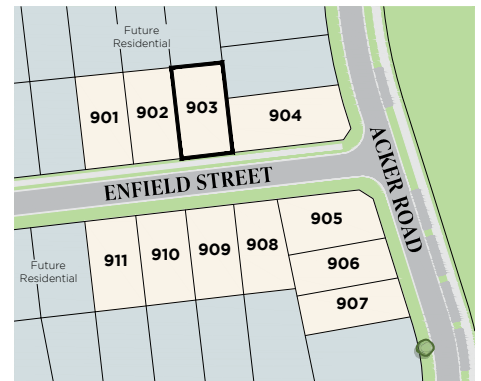
### LEGEND

	Sewer main
	Sewer structure
	Water main
	Water hydrant
	Water stop valve
	Electricity services
	Street light
	Electrical pillar
	Fibre optic comms
	Fibre optic comms pit
	Gas
	Retaining wall
	Design surface contour
	Stormwater pipe
	Stormwater lintel

(AB) EASEMENT TO DRAIN WATER 2.5 WIDE  
(AC) EASEMENT FOR SUPPORT OF  
RETAINING WALL 0.9 WIDE

### NOTES:

1. Contours are based on finished design levels and are subject to construction and Council certification and therefore should not be considered as final or as-built.
2. Location of utility services including but not limited to power, water, sewer, communications and gas are subject to construction and supply authority certification and therefore should not be considered as final or as-built.
3. Survey information such as boundary dimensions and areas, easements etc are subject to final survey. Purchasers should refer to the deposited plan and 88B instrument contained in the contract for sale of land for further detailed information.
4. Bushfire and geotechnical classification are provided for convenience. Purchasers should refer to referenced detail specialist reports.
5. This preliminary site analysis plan has been collated from various sources of design information and is provided for convenience to assist purchasers in obtaining quotations/tenders for dwelling construction.
6. This document does not form part of the contract of sale of the land.
7. Anticipated site classification is H2 or better (to be confirmed at completion of construction).



VERSION: A	SCALE: 1:300 (A4)	PREPARED BY:
COMMENT: INITIAL ISSUE		HIGHVIEW PARTNERS
DATE: 21 NOVEMBER 2025		

THELOXFORD.COM.AU



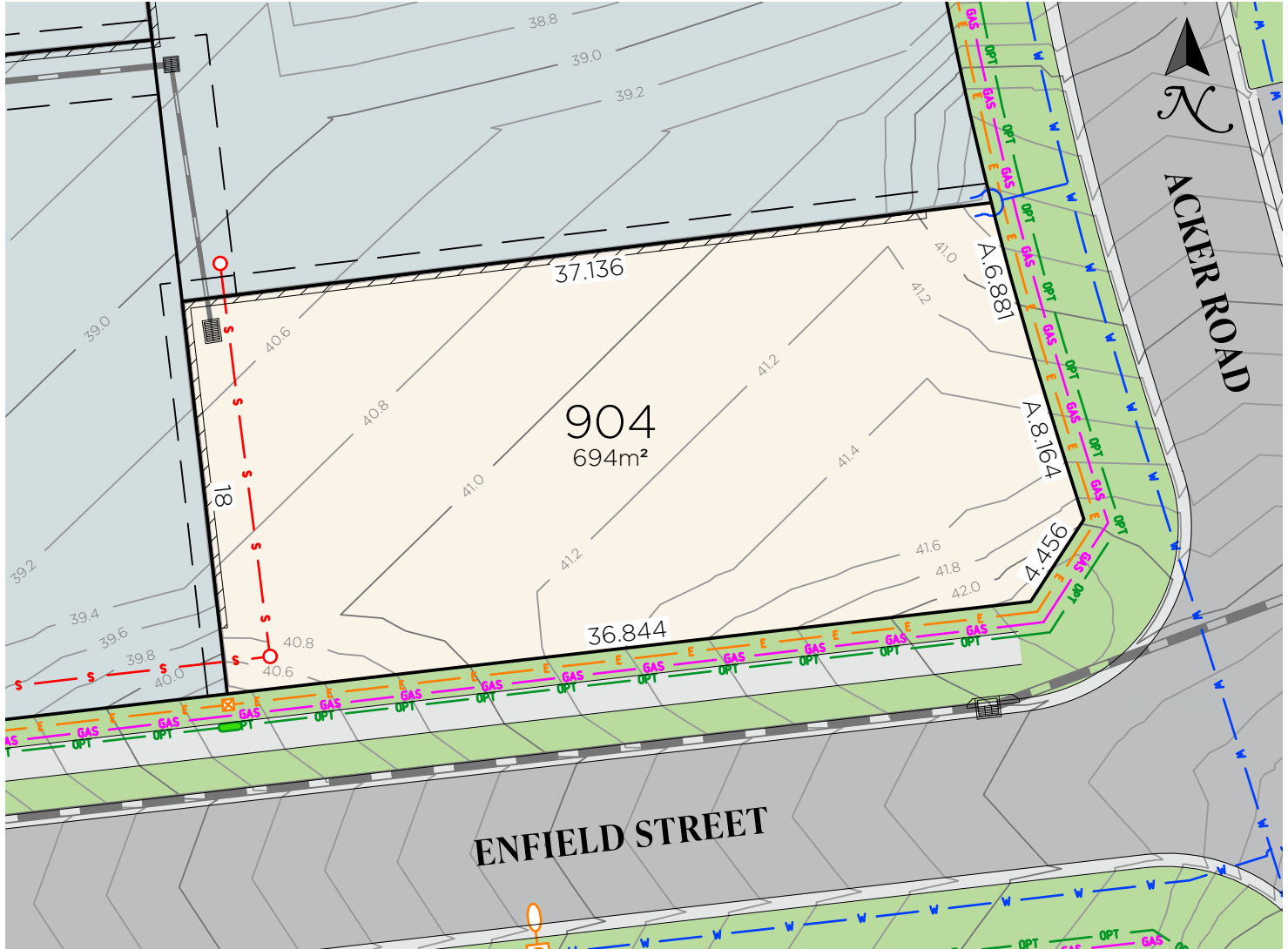
A QUALITY  
MCCLOY  
GROUP  
PROJECT



# The Loxford

## 904

Enfield Street  
Gillieston Heights

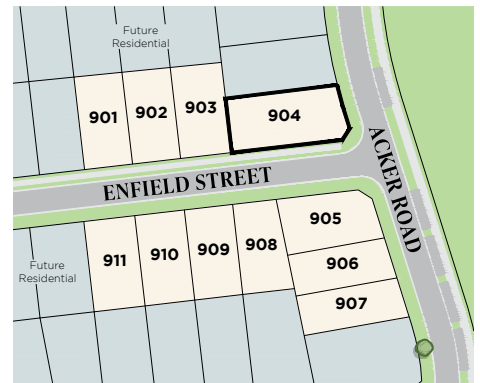


### LEGEND

	Sewer main
	Sewer structure
	Water main
	Water hydrant
	Water stop valve
	Electricity services
	Street light
	Electrical pillar
	Fibre optic comms
	Fibre optic comms pit
	Gas
	Retaining wall
	Design surface contour
	Stormwater pipe
	Stormwater lintel

### NOTES:

1. Contours are based on finished design levels and are subject to construction and Council certification and therefore should not be considered as final or as-built.
2. Location of utility services including but not limited to power, water, sewer, communications and gas are subject to construction and supply authority certification and therefore should not be considered as final or as-built.
3. Survey information such as boundary dimensions and areas, easements etc are subject to final survey. Purchasers should refer to the deposited plan and 88B instrument contained in the contract for sale of land for further detailed information.
4. Bushfire and geotechnical classification are provided for convenience. Purchasers should refer to referenced detail specialist reports.
5. This preliminary site analysis plan has been collated from various sources of design information and is provided for convenience to assist purchasers in obtaining quotations/tenders for dwelling construction.
6. This document does not form part of the contract of sale of the land.
7. Anticipated site classification is H2 or better (to be confirmed at completion of construction).



VERSION: A	SCALE: 1:300 (A4)	PREPARED BY:
COMMENT: INITIAL ISSUE		HIGHVIEW PARTNERS
DATE: 21 NOVEMBER 2025		

THELOXFORD.COM.AU



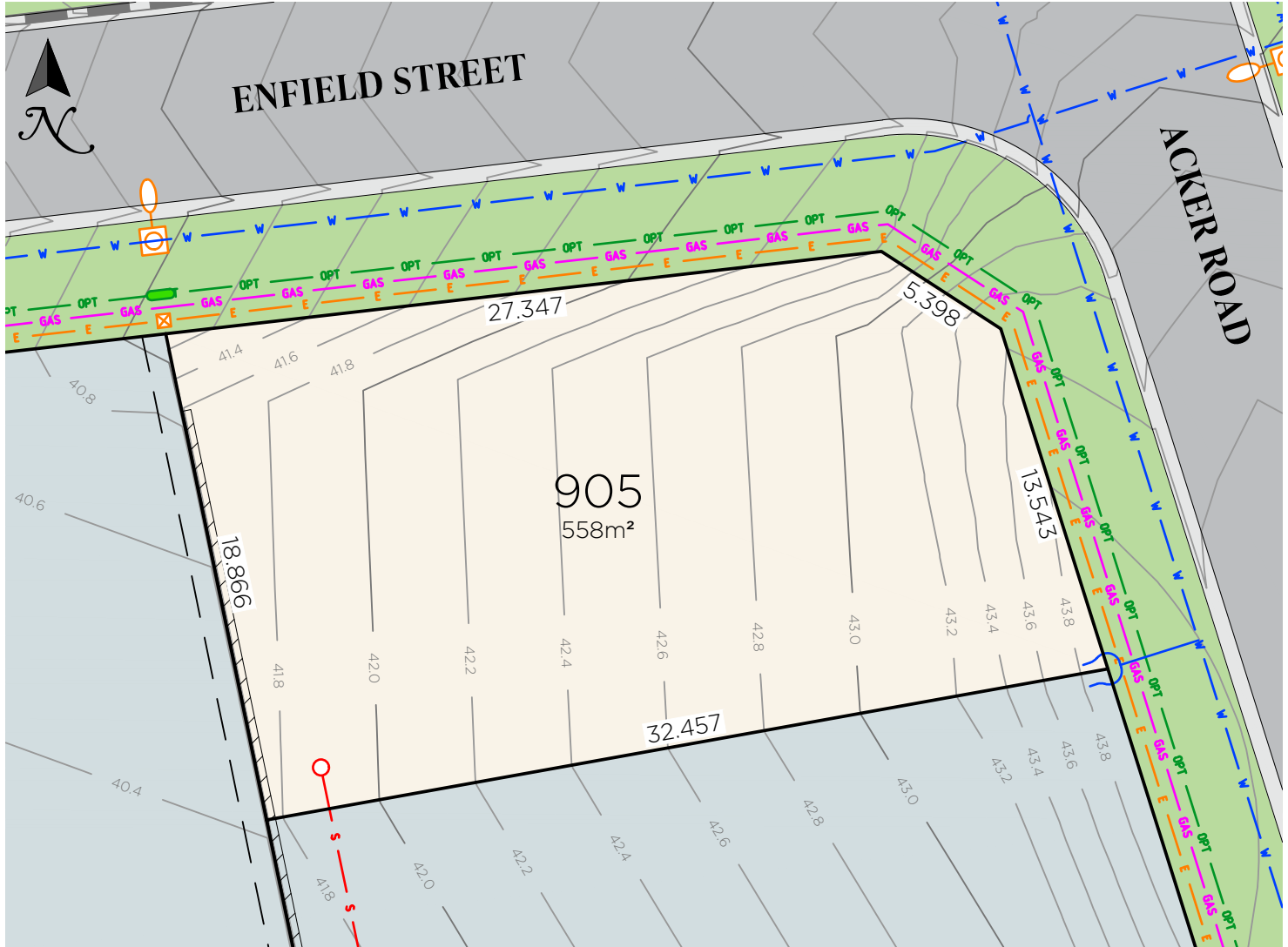
A QUALITY  
MCCLOY  
GROUP  
PROJECT



# The Loxford

## 905

Enfield Street  
Gillieston Heights

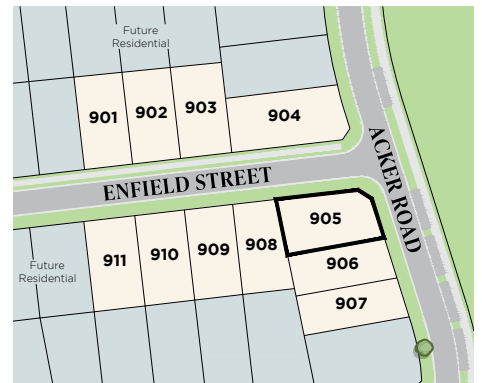


### LEGEND

	Sewer main
	Water main
	Water hydrant
	Water stop valve
	Electricity services
	Street light
	Electrical pillar
	Fibre optic comms
	Fibre optic comms pit
	Gas
	Retaining wall
	Design surface contour
	Stormwater pipe
	Stormwater lintel

### NOTES:

1. Contours are based on finished design levels and are subject to construction and Council certification and therefore should not be considered as final or as-built.
2. Location of utility services including but not limited to power, water, sewer, communications and gas are subject to construction and supply authority certification and therefore should not be considered as final or as-built.
3. Survey information such as boundary dimensions and areas, easements etc are subject to final survey. Purchasers should refer to the deposited plan and 88B instrument contained in the contract for sale of land for further detailed information.
4. Bushfire and geotechnical classification are provided for convenience. Purchasers should refer to referenced detail specialist reports.
5. This preliminary site analysis plan has been collated from various sources of design information and is provided for convenience to assist purchasers in obtaining quotations/tenders for dwelling construction.
6. This document does not form part of the contract of sale of the land.
7. Anticipated site classification is H2 or better (to be confirmed at completion of construction).



VERSION: A	SCALE: 1:250 (A4)	PREPARED BY:
COMMENT: INITIAL ISSUE		HIGHVIEW PARTNERS
DATE: 21 NOVEMBER 2025		

THELOXFORD.COM.AU



A QUALITY  
MCCLOY  
GROUP  
PROJECT





# The Loxford

## 906

Acker Road  
Gillieston Heights

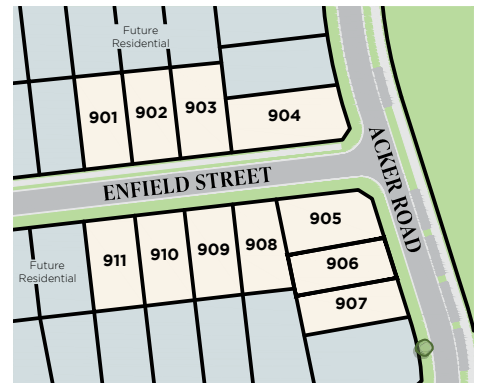


### LEGEND

- S Sewer main
- O Sewer structure
- W Water main
- Water hydrant
- X Water stop valve
- E Electricity services
- Street light
- Electrical pillar
- OPT Fibre optic comms
- Fibre optic comms pit
- GAS Gas
- Retaining wall
- Design surface contour
- Stormwater pipe
- Stormwater lintel

### NOTES:

- Contours are based on finished design levels and are subject to construction and Council certification and therefore should not be considered as final or as-built.
- Location of utility services including but not limited to power, water, sewer, communications and gas are subject to construction and supply authority certification and therefore should not be considered as final or as-built.
- Survey information such as boundary dimensions and areas, easements etc are subject to final survey. Purchasers should refer to the deposited plan and 88B instrument contained in the contract for sale of land for further detailed information.
- Bushfire and geotechnical classification are provided for convenience. Purchasers should refer to referenced detail specialist reports.
- This preliminary site analysis plan has been collated from various sources of design information and is provided for convenience to assist purchasers in obtaining quotations/tenders for dwelling construction.
- This document does not form part of the contract of sale of the land.
- Anticipated site classification is H2 or better (to be confirmed at completion of construction).



VERSION: A	SCALE: 1:250 (A4)	PREPARED BY:
COMMENT: INITIAL ISSUE		HIGHVIEW PARTNERS
DATE: 21 NOVEMBER 2025		

THELOXFORD.COM.AU



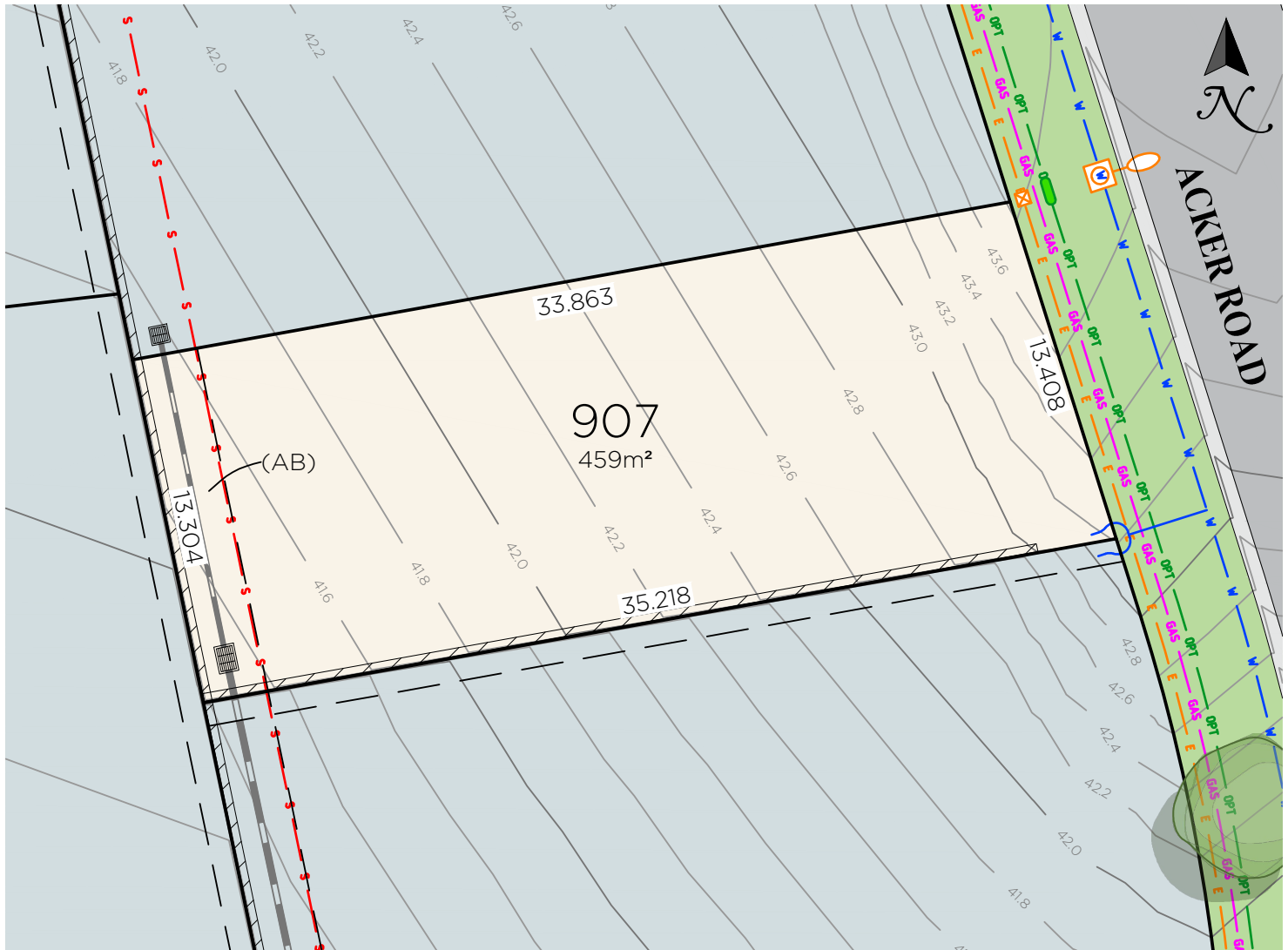
A QUALITY  
MCCLOY  
GROUP  
PROJECT



# The Loxford

## 907

Acker Road  
Gillieston Heights



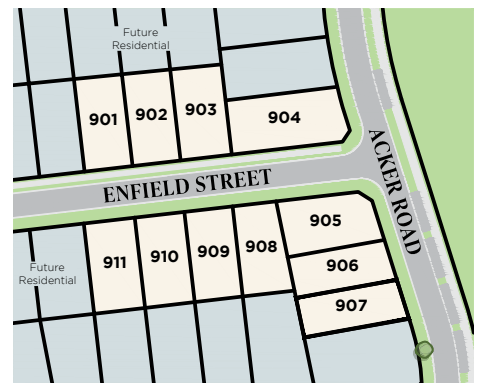
### LEGEND

- S Sewer main
- O Sewer structure
- W Water main
- W Water hydrant
- X Water stop valve
- E Electricity services
- Street light
- Electrical pillar
- OPT Fibre optic comms
- Fibre optic comms pit
- GAS Gas
- Retaining wall
- Design surface contour
- Stormwater pipe
- Stormwater lintel

(AB) EASEMENT TO DRAIN WATER 2.5 WIDE

### NOTES:

1. Contours are based on finished design levels and are subject to construction and Council certification and therefore should not be considered as final or as-built.
2. Location of utility services including but not limited to power, water, sewer, communications and gas are subject to construction and supply authority certification and therefore should not be considered as final or as-built.
3. Survey information such as boundary dimensions and areas, easements etc are subject to final survey. Purchasers should refer to the deposited plan and 88B instrument contained in the contract for sale of land for further detailed information.
4. Bushfire and geotechnical classification are provided for convenience. Purchasers should refer to referenced detail specialist reports.
5. This preliminary site analysis plan has been collated from various sources of design information and is provided for convenience to assist purchasers in obtaining quotations/tenders for dwelling construction.
6. This document does not form part of the contract of sale of the land.
7. Anticipated site classification is H2 or better (to be confirmed at completion of construction).



VERSION: A	SCALE: 1:250 (A4)	PREPARED BY:
COMMENT: INITIAL ISSUE		HIGHVIEW PARTNERS
DATE: 21 NOVEMBER 2025		

THELOXFORD.COM.AU



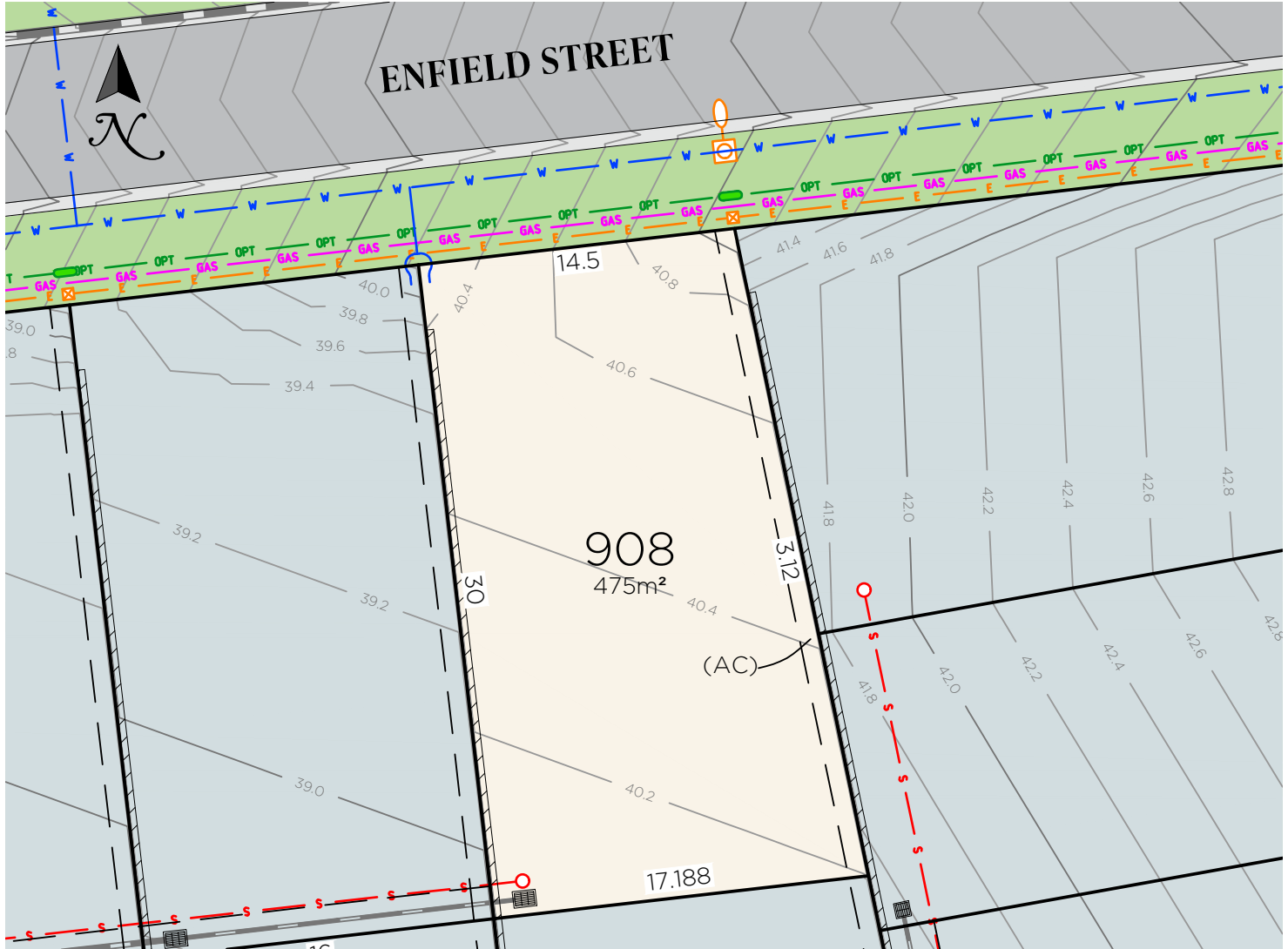
A QUALITY  
MCCLOY  
GROUP  
PROJECT



# The Loxford

## 908

Enfield Street  
Gillieston Heights



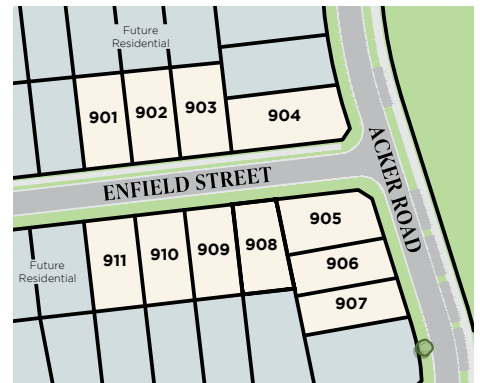
### LEGEND

- S Sewer main
- O Sewer structure
- W Water main
- X Water hydrant
- Water stop valve
- E Electricity services
- Street light
- Electrical pillar
- OPT Fibre optic comms
- Fibre optic comms pit
- GAS Gas
- Retaining wall
- Design surface contour
- Stormwater pipe
- Stormwater lintel

(AC) EASEMENT FOR SUPPORT OF  
RETAINING WALL 0.9 WIDE

### NOTES:

1. Contours are based on finished design levels and are subject to construction and Council certification and therefore should not be considered as final or as-built.
2. Location of utility services including but not limited to power, water, sewer, communications and gas are subject to construction and supply authority certification and therefore should not be considered as final or as-built.
3. Survey information such as boundary dimensions and areas, easements etc are subject to final survey. Purchasers should refer to the deposited plan and 88B instrument contained in the contract for sale of land for further detailed information.
4. Bushfire and geotechnical classification are provided for convenience. Purchasers should refer to referenced detail specialist reports.
5. This preliminary site analysis plan has been collated from various sources of design information and is provided for convenience to assist purchasers in obtaining quotations/tenders for dwelling construction.
6. This document does not form part of the contract of sale of the land.
7. Anticipated site classification is H2 or better (to be confirmed at completion of construction).



VERSION: A	SCALE: 1:300 (A4)	PREPARED BY:
COMMENT: INITIAL ISSUE		HIGHVIEW PARTNERS
DATE: 21 NOVEMBER 2025		

THELOXFORD.COM.AU



A QUALITY  
MCCLOY GROUP  
PROJECT

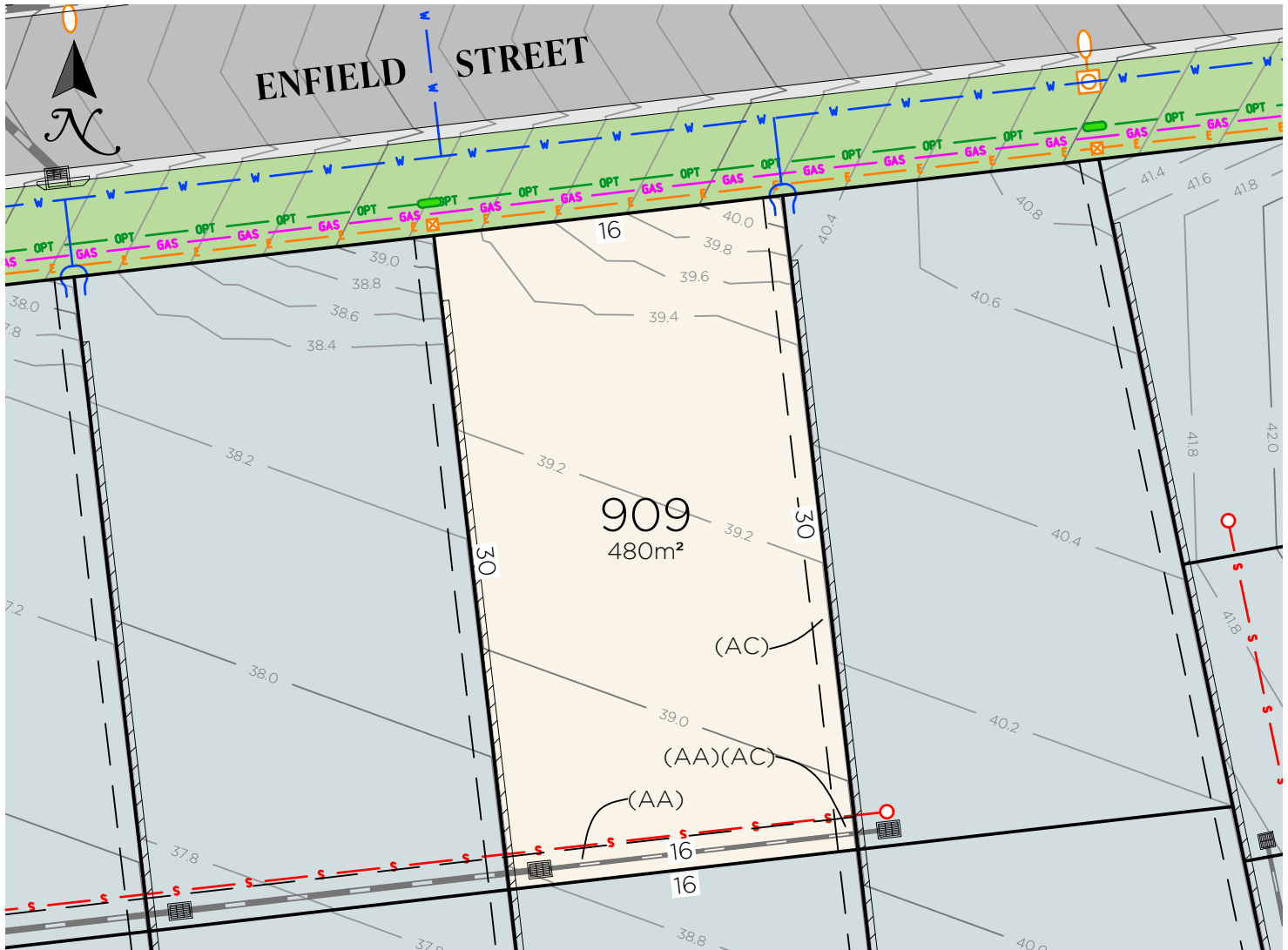




# The Loxford

## 909

Enfield Street  
Gillieston Heights



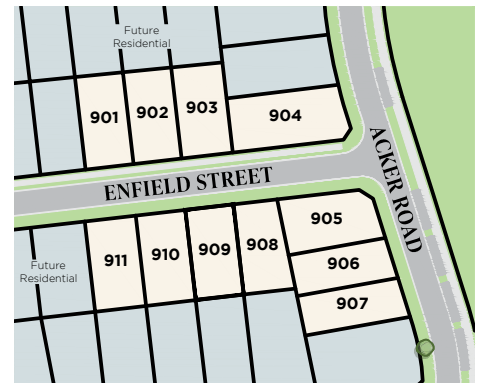
### LEGEND

- S Sewer main
- O Sewer structure
- W Water main
- W Water hydrant
- X Water stop valve
- E Electricity services
- Street light
- Electrical pillar
- OPT Fibre optic comms
- Fibre optic comms pit
- GAS Gas
- Retaining wall
- Design surface contour
- Stormwater pipe
- Stormwater lintel

(AA) EASEMENT TO DRAIN WATER 1.5 WIDE  
(AC) EASEMENT FOR SUPPORT OF  
RETAINING WALL 0.9 WIDE

### NOTES:

- Contours are based on finished design levels and are subject to construction and Council certification and therefore should not be considered as final or as-built.
- Location of utility services including but not limited to power, water, sewer, communications and gas are subject to construction and supply authority certification and therefore should not be considered as final or as-built.
- Survey information such as boundary dimensions and areas, easements etc are subject to final survey. Purchasers should refer to the deposited plan and 88B instrument contained in the contract for sale of land for further detailed information.
- Bushfire and geotechnical classification are provided for convenience. Purchasers should refer to referenced detail specialist reports.
- This preliminary site analysis plan has been collated from various sources of design information and is provided for convenience to assist purchasers in obtaining quotations/tenders for dwelling construction.
- This document does not form part of the contract of sale of the land.
- Anticipated site classification is H2 or better (to be confirmed at completion of construction).



VERSION: A	SCALE: 1:300 (A4)	PREPARED BY:
COMMENT: INITIAL ISSUE		HIGHVIEW PARTNERS
DATE: 21 NOVEMBER 2025		

THELOXFORD.COM.AU



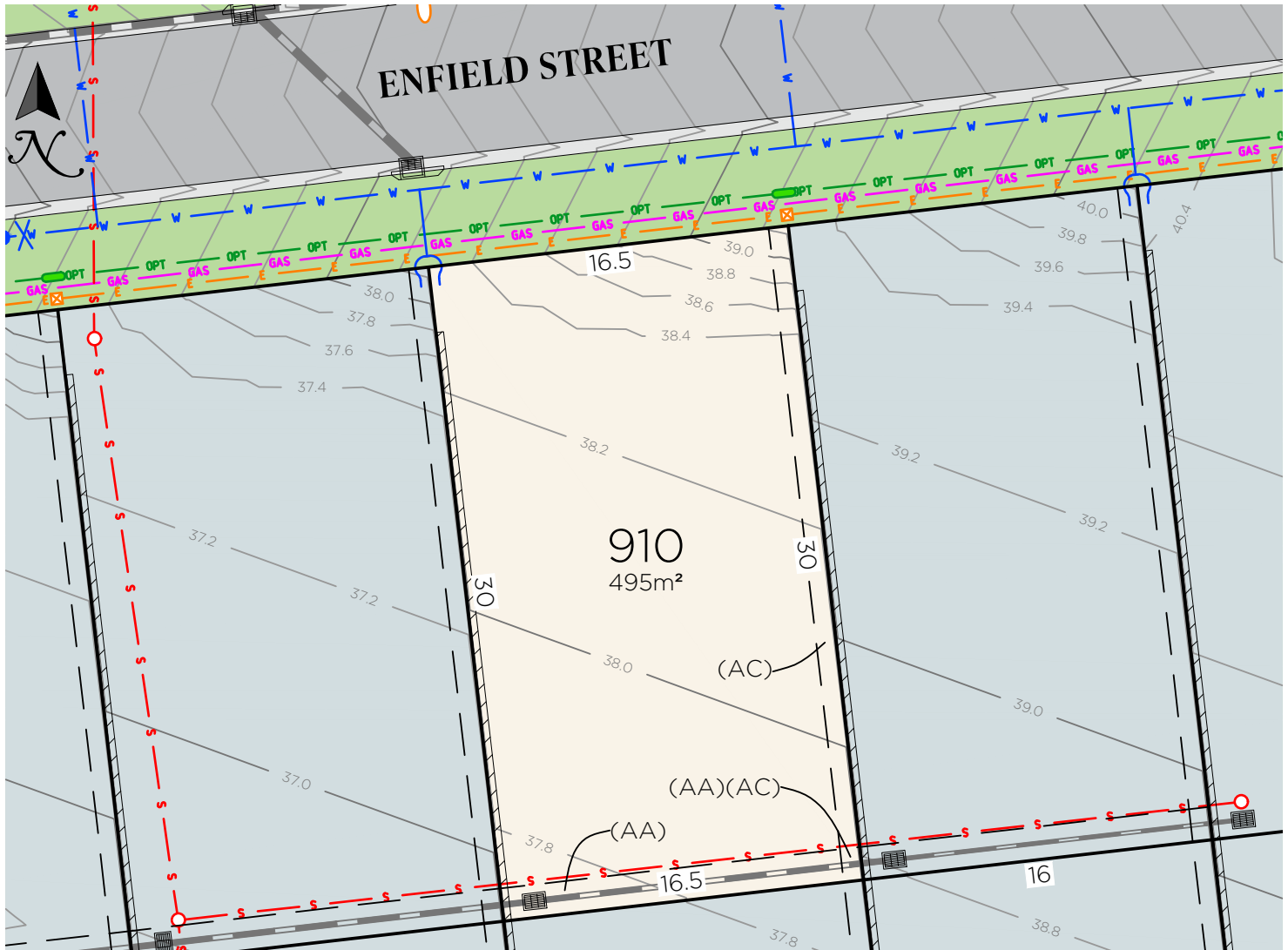
A QUALITY  
MCCLOY GROUP  
PROJECT



# The Loxford

## 910

Enfield Street  
Gillieston Heights



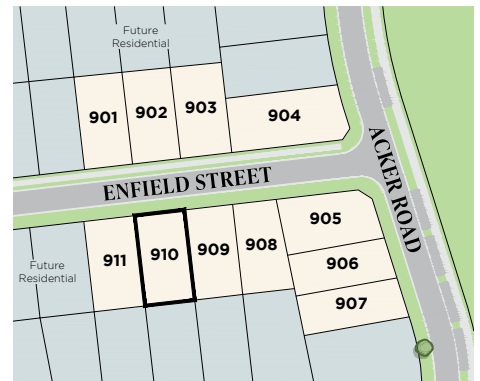
### LEGEND

- S — Sewer main
- W — Water main
- W — Water hydrant
- W — Water stop valve
- E — Electricity services
- E — Street light
- E — Electrical pillar
- OPT — Fibre optic comms
- OPT — Fibre optic comms pit
- GAS — Gas
- Retaining wall
- Design surface contour
- Stormwater pipe
- Stormwater lintel

(AA) EASEMENT TO DRAIN WATER 1.5 WIDE  
(AC) EASEMENT FOR SUPPORT OF  
RETAINING WALL 0.9 WIDE

### NOTES:

1. Contours are based on finished design levels and are subject to construction and Council certification and therefore should not be considered as final or as-built.
2. Location of utility services including but not limited to power, water, sewer, communications and gas are subject to construction and supply authority certification and therefore should not be considered as final or as-built.
3. Survey information such as boundary dimensions and areas, easements etc are subject to final survey. Purchasers should refer to the deposited plan and 88B instrument contained in the contract for sale of land for further detailed information.
4. Bushfire and geotechnical classification are provided for convenience. Purchasers should refer to referenced detail specialist reports.
5. This preliminary site analysis plan has been collated from various sources of design information and is provided for convenience to assist purchasers in obtaining quotations/tenders for dwelling construction.
6. This document does not form part of the contract of sale of the land.
7. Anticipated site classification is H2 or better (to be confirmed at completion of construction).



VERSION: A	SCALE: 1:300 (A4)	PREPARED BY:
COMMENT: INITIAL ISSUE		HIGHVIEW PARTNERS
DATE: 21 NOVEMBER 2025		

THELOXFORD.COM.AU



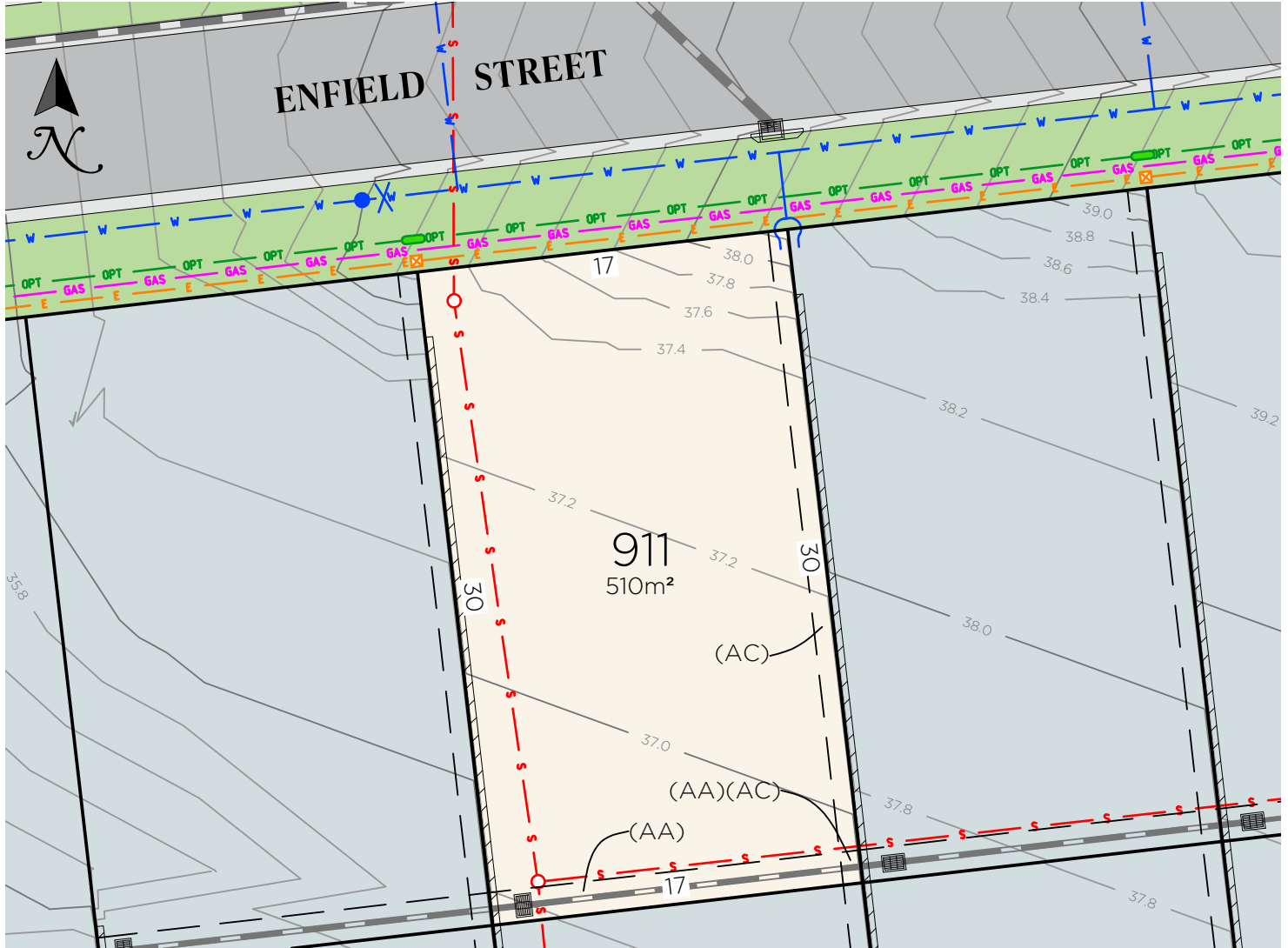
A QUALITY  
MCCLOY GROUP  
PROJECT



# The Loxford

## 911

Enfield Street  
Gillieston Heights



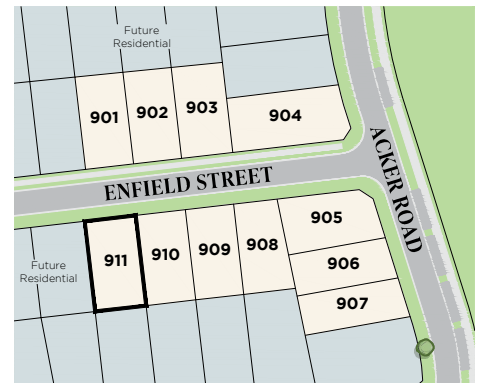
### LEGEND

- S Sewer main
- O Sewer structure
- W Water main
- Water hydrant
- X Water stop valve
- E Electricity services
- Street light
- Electrical pillar
- OPT Fibre optic comms
- Fibre optic comms pit
- GAS Gas
- Retaining wall
- Design surface contour
- Stormwater pipe
- Stormwater lintel

(AA) EASEMENT TO DRAIN WATER 1.5 WIDE  
(AC) EASEMENT FOR SUPPORT OF  
RETAINING WALL 0.9 WIDE

### NOTES:

- Contours are based on finished design levels and are subject to construction and Council certification and therefore should not be considered as final or as-built.
- Location of utility services including but not limited to power, water, sewer, communications and gas are subject to construction and supply authority certification and therefore should not be considered as final or as-built.
- Survey information such as boundary dimensions and areas, easements etc are subject to final survey. Purchasers should refer to the deposited plan and 88B instrument contained in the contract for sale of land for further detailed information.
- Bushfire and geotechnical classification are provided for convenience. Purchasers should refer to referenced detail specialist reports.
- This preliminary site analysis plan has been collated from various sources of design information and is provided for convenience to assist purchasers in obtaining quotations/tenders for dwelling construction.
- This document does not form part of the contract of sale of the land.
- Anticipated site classification is H2 or better (to be confirmed at completion of construction).



VERSION: A	SCALE: 1:300 (A4)	PREPARED BY:
COMMENT: INITIAL ISSUE		HIGHVIEW PARTNERS
DATE: 21 NOVEMBER 2025		

THELOXFORD.COM.AU



A QUALITY  
MCCLOY  
GROUP  
PROJECT