







The Loxford

House & Land

Linden 184N - Newport - Harbour

\$735,286*

Home Size: 184.28m² | Lot Size: 495m² | 16.5m x 30m Lot

 4  2  2  2


Lot 910 Enfield Street, Gillieston Heights | The Loxford Estate


House & Land Package Inclusions

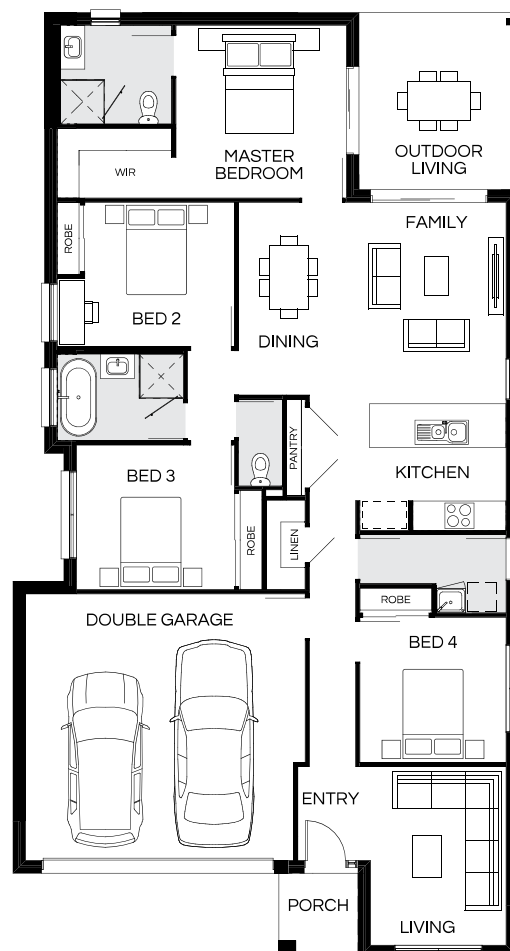
- ✓ Classic series inclusions
- ✓ Site Cost Allowance
- ✓ LED Downlights
- ✓ European designed stainless steel kitchen appliances
- ✓ Quality bathroom tapware, baths and frameless mirrors
- ✓ 700mm Tiled kitchen splashback
- ✓ Carpet and Tiling
- ✓ Ducted Multi Zone Air Conditioning
- ✓ Harbour External Colour Scheme
- ✓ Steel Frame and Sheet Roof
- ✓ Integrated tiled porch and outdoor area
- ✓ Opticomm Package
- ✓ 7 star BASIX
- ✓ Council application fees



Angela Workman

 0461 445 620

 a.workman@coralhomes.com.au



Facade image may depict features such as landscaping, furniture, window treatments, lighting and colours which are not included in the package price or which are not available from Coral Homes.

CORAL HOMES

Facade image may depict features such as landscaping, timber decking, furniture, window treatments and lighting which are not included in the package price or which are not available from Coral Homes. Floorplan is indicative only, conceptual in nature and subject to change. Floorplan may depict fixtures, fittings, features, finishes, inclusions, furnishings, vehicles and/or other products which are not included in the house design, not included in the package price and/or not available from Coral Homes. *Price shown is based on Coral homes Newcastle / Central Coast region price list dated 01-01-2026. Land price at the time of printing is \$383,000. Price shown does not include stamp duty, registration fees, additional amounts payable in respect of variations to the house design requested by the buyer or any other incidental fees associated with the acquisition of the land and home. Plan is subject to approval by the Principal Developer and Local Authorities. Additional costs may apply for bushfire, acoustics, N3, easements or additional covenant requirements and retaining walls. Coral Homes reserves the right to withdraw this package at any time, prior to entry into a contract, without notice. QBCC 50792/1014053, OFT NSW 62084C, BLD260339.