







House & Land

Monterey 207N - St Kilda - Magnolia

\$770,622*



Home Size: 207.17m² | Lot Size: 575.2m² | 17.4m x 33.055m Lot

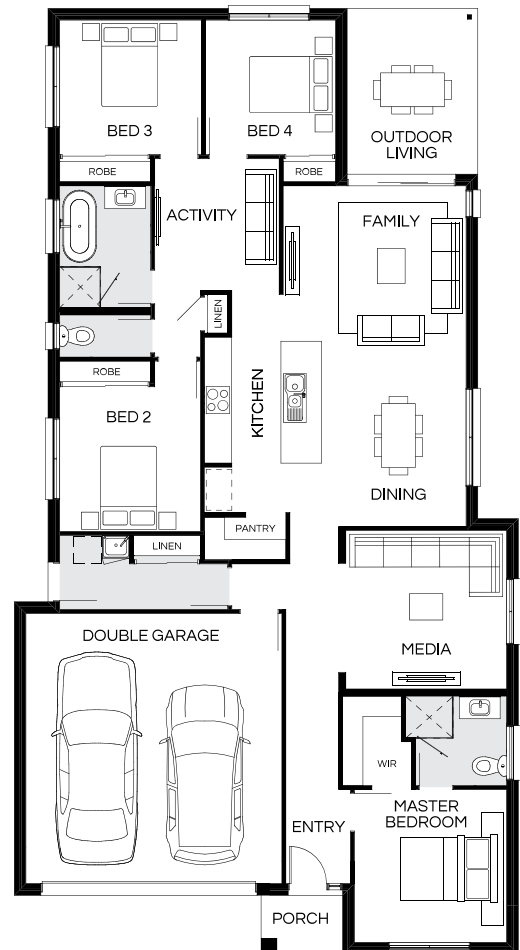
 4
  3
  2
  2

Facade image may depict features such as landscaping, furniture, window treatments, lighting and colours which are not included in the package price or which are not available from Coral Homes.

Lot 157 Premier Boulevard, Gillieston Heights | The Loxford Estate


House & Land Package Inclusions


- ✓ Classic series inclusions
- ✓ Fixed price site costs
- ✓ TRUECORE® steel frame & COLORBOND® steel roof
- ✓ European inspired stainless steel kitchen appliances
- ✓ Carpet and Tiling
- ✓ Integrated concrete slab to Outdoor Living Area
- ✓ 700mm high tiled kitchen splashback
- ✓ NBN Package
- ✓ Council fees included
- ✓ LED Downlights
- ✓ Custom-designed floor-mounted vanity cabinets
- ✓ 900mm high frameless polished edge mirrors to vanity units
- ✓ Caesarstone benchtops to kitchen, bathroom and ensuite



Daniel Hobson

New Home Consultant

 0436 654 074

 d.hobson@coralhomes.com.au

CORAL HOMES

Facade image may depict features such as landscaping, timber decking, furniture, window treatments and lighting which are not included in the package price or which are not available from Coral Homes. Floorplan is indicative only, conceptual in nature and subject to change. Floorplan may depict fixtures, fittings, features, finishes, inclusions, furnishings, vehicles and/or other products which are not included in the house design, not included in the package price and/or not available from Coral Homes. *Price shown is based on Coral homes Newcastle / Central Coast region price list dated 02-04-2026. Land price at the time of printing is \$402,000. Price shown does not include stamp duty, registration fees, additional amounts payable in respect of variations to the house design requested by the buyer or any other incidental fees associated with the acquisition of the land and home. Plan is subject to approval by the Principal Developer and Local Authorities. Additional costs may apply for bushfire, acoustics, N3, easements or additional covenant requirements and retaining walls. Coral Homes reserves the right to withdraw this package at any time, prior to entry into a contract, without notice. QBCC 50792/1014053, OFT NSW 62084C, BLD260339.