

House & Land

Monash 296N - Sahara Facade

\$925,686*



Home Size: 296.75m² | Lot Size: 576.9m² | 17.5m x 33.055m Lot

5 3 3 2

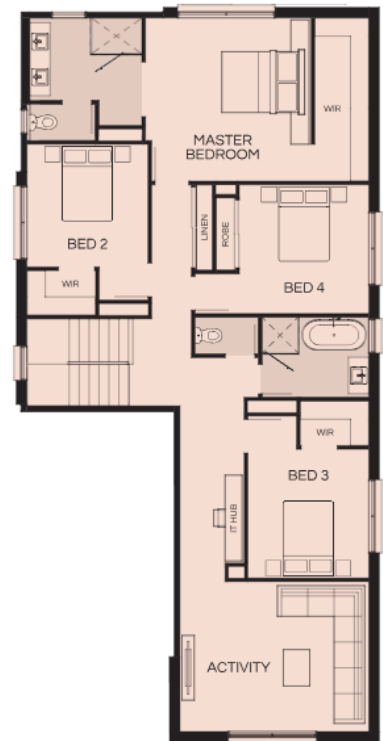
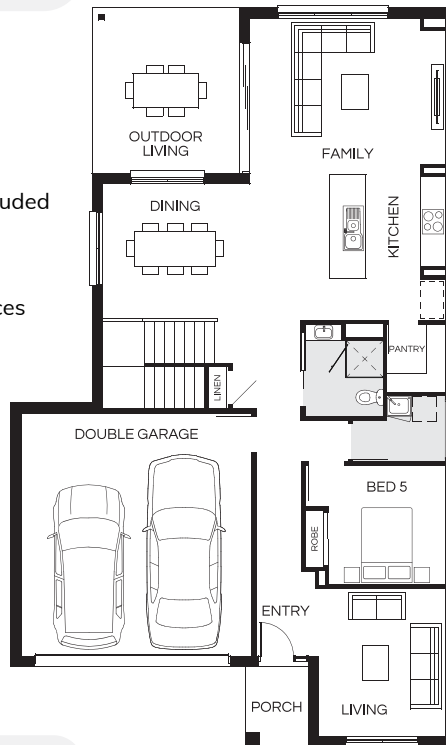


Facade image may depict features such as landscaping, furniture, window treatments, lighting and colours which are not included in the package price or which are not available from Coral Homes.

Lot 156 Premier Boulevard, Gillieston Heights | The Loxford Estate

House & Land Package Inclusions

- ✓ Designer Option 3 Ducted Multi Zone Air-conditioning included
- ✓ Fixed price site costs
- ✓ TRUECORE® steel frame & COLORBOND® steel roof
- ✓ 900mm European inspired stainless steel kitchen appliances
- ✓ Carpet and Tiling
- ✓ 2550mm High Ceilings
- ✓ Daikin multi-zoned reverse cycle ducted air-conditioning
- ✓ NBN Package
- ✓ Council fees included
- ✓ Caesarstone benchtops to kitchen, bathroom and ensuite
- ✓ Tiled kitchen splashback
- ✓ Quality bathroom tapware, baths and frameless mirrors
- ✓ Semi-frameless shower screen to bathroom and ensuite



Daniel Hobson

New Home Consultant

0436 654 074

d.hobson@coralhomes.com.au

CORAL HOMES

Facade image may depict features such as landscaping, timber decking, furniture, window treatments and lighting which are not included in the package price or which are not available from Coral Homes. Floorplan is indicative only, conceptual in nature and subject to change. Floorplan may depict fixtures, fittings, features, finishes, inclusions, furnishings, vehicles and/or other products which are not included in the house design, not included in the package price and/or not available from Coral Homes. *Price shown is based on Coral homes Newcastle / Central Coast region price list dated 02-04-2026. Land price at the time of printing is \$402,000. Price shown does not include stamp duty, registration fees, additional amounts payable in respect of variations to the house design requested by the buyer or any other incidental fees associated with the acquisition of the land and home. Plan is subject to approval by the Principal Developer and Local Authorities. Additional costs may apply for bushfire, acoustics, N3, easements or additional covenant requirements and retaining walls. Coral Homes reserves the right to withdraw this package at any time, prior to entry into a contract, without notice. QBCC 50792/1014053, OFT NSW 62084C, BLD260339.