

# House & Land Package



The Loxford



Package Price  
**\$1,006,000\***

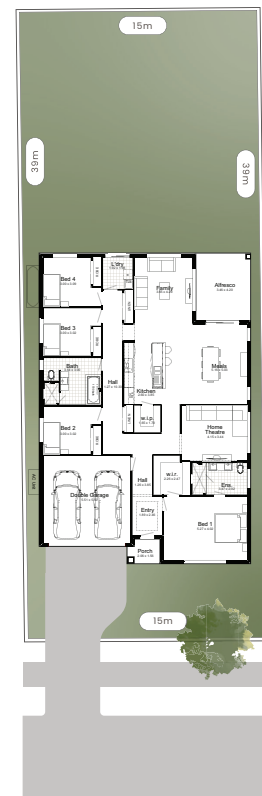
Lot 112  
112 Mayfair Street  
Gillieston Heights NSW 2321

Ryan Weng  
0499 510 669  
ryan.w@betterbuilthomes.com.au

\*Illustration purposes only, modifications will be required to comply with The Loxford's Design Guidelines.

## BETTER LUXURY + OPULENCE PROMOTION

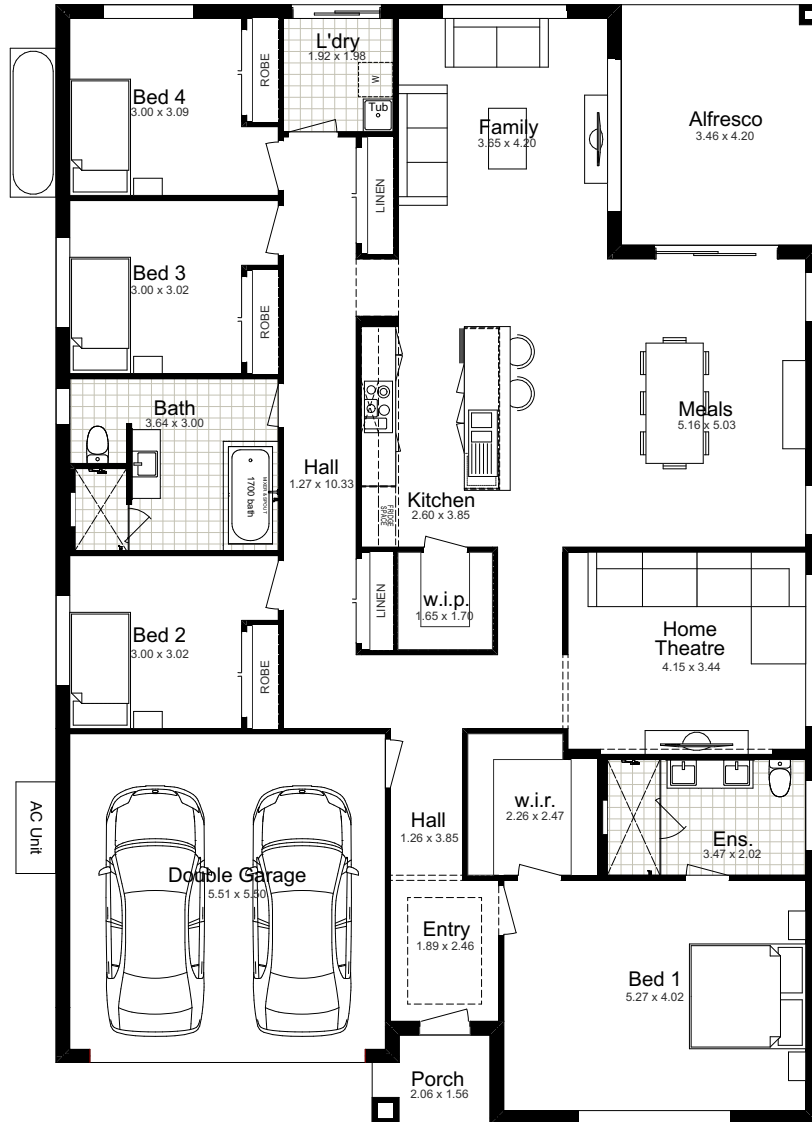
- Caesarstone 40mm kitchen benchtop
- Tiles Mainfloors
- Laundry cabinetry
- Undermount double bowl sink
- Westinghouse microwave & appliances
- Glass splashback to kitchen
- 2600mm ceilings for a sense of space
- 1200mm extra-wide entrance door
- Tiling to porch & alfresco
- Floor-to-ceiling bathroom tiling
- Posh Solus free-standing bath
- Feature LED downlights
- Taubmans premium 3-coat paint system
- Hills 4-zone alarm system



Package Price  
**\$1,006,000\***

Home Design: Belrose 27  
 Facade: Willow

LAND SIZE	585m <sup>2</sup>		
TOTAL:	254.65m <sup>2</sup>	Garage:	34.12m <sup>2</sup>
Width:	13.33m	Porch:	2.99m <sup>2</sup>
Depth:	19.55m	Alfresco:	14.53m <sup>2</sup>
Ground Floor:	203.00m <sup>2</sup>		



GROUND FLOOR



DISCLAIMER: Façade Images shown on our brochures may feature alternative upgrades. Upgraded finishes are not included in the standard range or house design and should be used as a guide only. Plan dimensions, sizes & square meters will vary dependent on the chosen house façade & design. Better Built Homes reserves the right to revise plans, specifications & prices without notice or obligation. All plans are Copyright of Better Built Homes. Licence No. 244242C.