

House & Land Package



The Loxford



Package Price
\$1,199,000*

Lot 116
116 Mayfair Street
Gillieston Heights NSW 2321

Ryan Weng
0499 510 669
ryan.w@betterbuilthomes.com.au

*Illustration purposes only, modifications will be required to comply with The Loxford's Design Guidelines.

BETTER LUXURY + OPULENCE PROMOTION

- Caesarstone 40mm kitchen benchtop
- Tiles Mainfloors
- Laundry cabinetry
- Undermount double bowl sink
- Westinghouse microwave & appliances
- Glass splashback to kitchen
- 2600mm ceilings for a sense of space
- 1200mm extra-wide entrance door
- Tiling to porch & alfresco
- Floor-to-ceiling bathroom tiling
- Posh Solus free-standing bath
- Feature LED downlights
- Taubmans premium 3-coat paint system
- Hills 4-zone alarm system



Package Price

\$1,199,000*

Home Design: Glenbrook 36

Facade: Classic

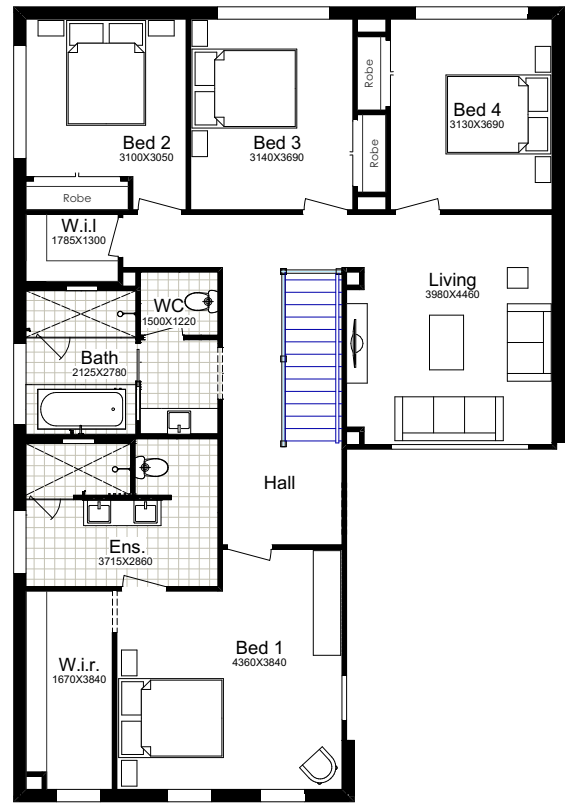
LAND SIZE

718m²

TOTAL:	331.65m ²	First Floor:	135.65m ²
Width:	12.45m	Garage:	41.61m ²
Depth:	20.17m	Porch:	7.51m ²
Ground Floor:	126.49m ²	Alfresco:	20.39m ²



GROUND FLOOR



FIRST FLOOR

DISCLAIMER: Façade Images shown on our brochures may feature alternative upgrades. Upgraded finishes are not included in the standard range or house design and should be used as a guide only. Plan dimensions, sizes & square meters will vary dependent on the chosen house façade & design. Better Built Homes reserves the right to revise plans, specifications & prices without notice or obligation. All plans are Copyright of Better Built Homes. Licence No. 244242C.