



Lot 109 Loxford Estate - Gillieston Heights

SIENNA 22 **\$857,800***

 4  2  2  228.6m²  585m²

SIENNA 22 HAMPTONS FACADE

The award winning Sienna has a floor plan that includes the best of everything. With flexible open-plan living, a separate kids lounge and plenty of spaces to relax and unwind, the Sienna is perfect for families who enjoy entertaining.

INCLUSIONS

- 20mm stone benchtops to Kitchen and Bathrooms
- 2600 mm ceiling height
- 900 mm appliances plus 600 mm dishwasher
- Quality floor coverings
- 5.7kW Solar
- Site Costs*

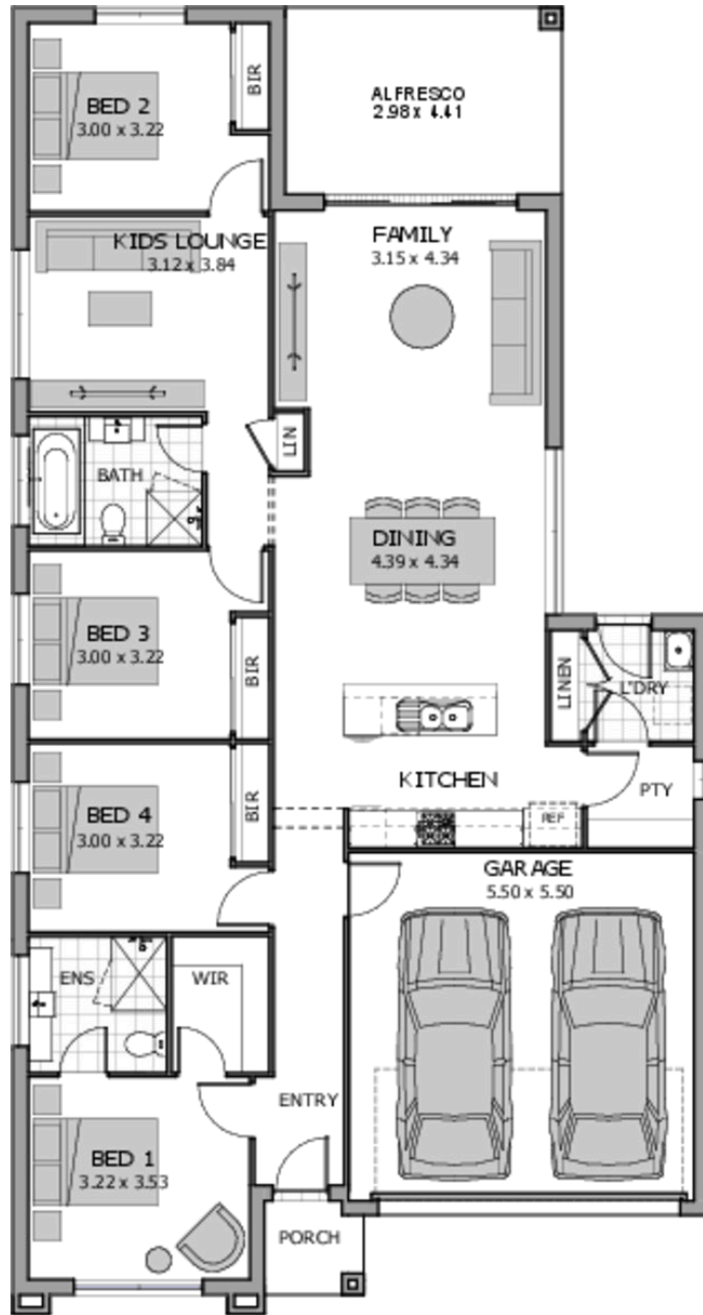
LOCATION & LIFESTYLE

The Loxford is a premium masterplanned land estate located off Cessnock Road in Gillieston Heights, Residents enjoy tree-lined streets, public art installations, and active cycleways. Its prime location offers natural country charm while remaining minutes from Maitland CBD and 40 minutes from Newcastle.

Taylor Reader

0459 714 445

taylor.reader@rawson.com.au



This plan is for illustrative purposes only - not to scale.

Ground Floor	153.25m ²	Alfresco	18.21m ²
Garage	33.12m ²	Porch	2.29m ²
		Total	206.86m²