



Lot 112 Loxford Estate - Gillieston Heights

HELIX 24 **\$876,000***

 4  2  2  234.7m²  585m²

HELIX 24 COVE FACADE

The award winning Helix offers dual living spaces in a seamless open plan design. The gourmet kitchen flows integrates with the dining, family and alfresco spaces. Bed one is privately located to the front, with three further bedrooms and a second bathroom at the rear of the design

INCLUSIONS

- 20mm stone benchtops to Kitchen & Bathrooms
- Ducted air conditioning
- 2600 mm ceiling height
- 900 mm appliances plus 600 mm dishwasher
- Quality floor coverings
- 5.7kW Solar
- Site Costs*

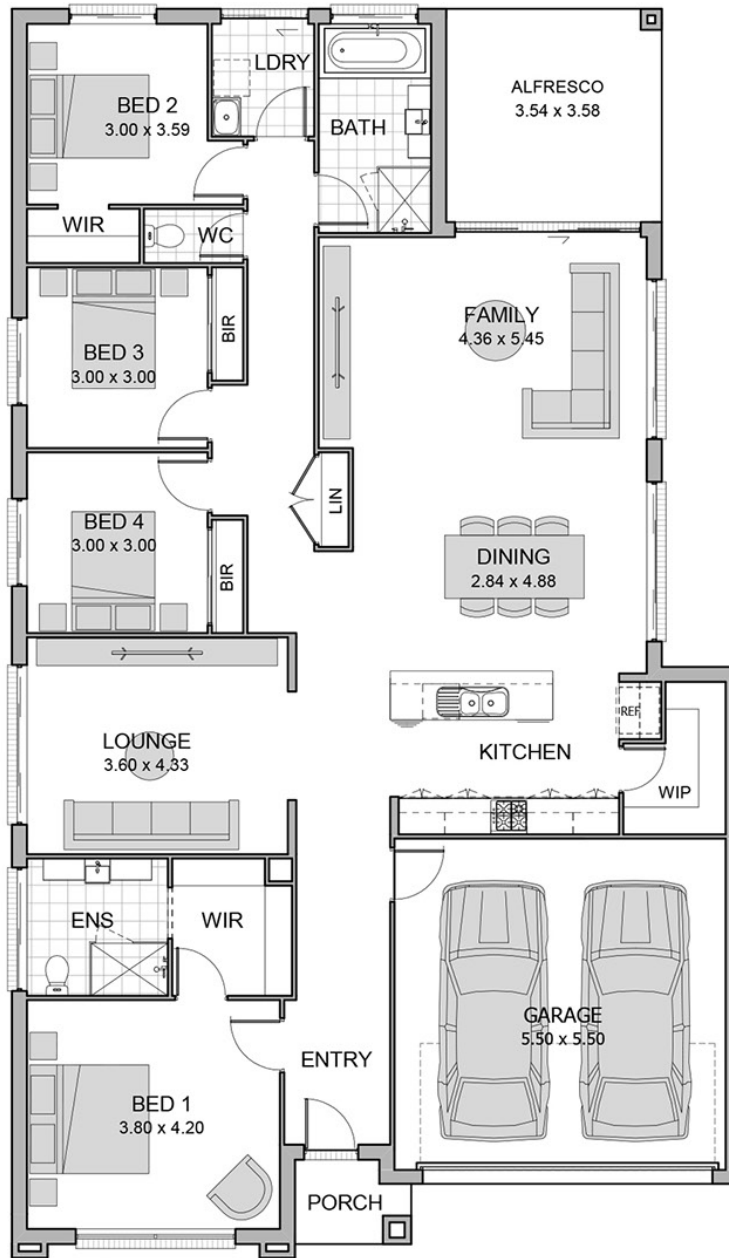
LOCATION & LIFESTYLE

The Loxford is a premium masterplanned land estate located off Cessnock Road in Gillieston Heights, Residents enjoy tree-lined streets, public art installations, and active cycleways. Its prime location offers natural country charm while remaining minutes from Maitland CBD and 40 minutes from Newcastle.

Taylor Reader

0459 714 445

taylor.reader@rawson.com.au



This plan is for illustrative purposes only - not to scale.

Ground Floor	179.31m ²
Garage	32.95m ²

Alfresco	12.67m ²
Porch	9.86m ²
Total	234.79m²