

House & Land Package



The Loxford



Package Price
\$914,500*

Lot 109
109 Mayfair Street
Gillieston Heights NSW 2321

Ryan Weng
0499 510 669
ryan.w@betterbuilthomes.com.au

*Illustration purposes only, modifications will be required to comply with The Loxford's Design Guidelines.

BETTER LIVING + INSPIRE PROMOTION

- T2 Treated Pine Frames
- Colorbond Steel metal roof with anticondensation blanket
- 20mm Caesarstone to kitchen and island benchtop
- 20mm Caesarstone benchtops to ensuite, powder rooms and bathrooms
- 1700mm Freestanding bath
- Haier Oven, Cooktop and Rangehood
- Cold water fridge point
- Actron 14kw Day & Night 2 zone ducted air conditioning
- Hills hub structured cabling system with control box to garage
- Pulldown sink mixer
- Quality assurance program with independent inspection carried out at critical stages



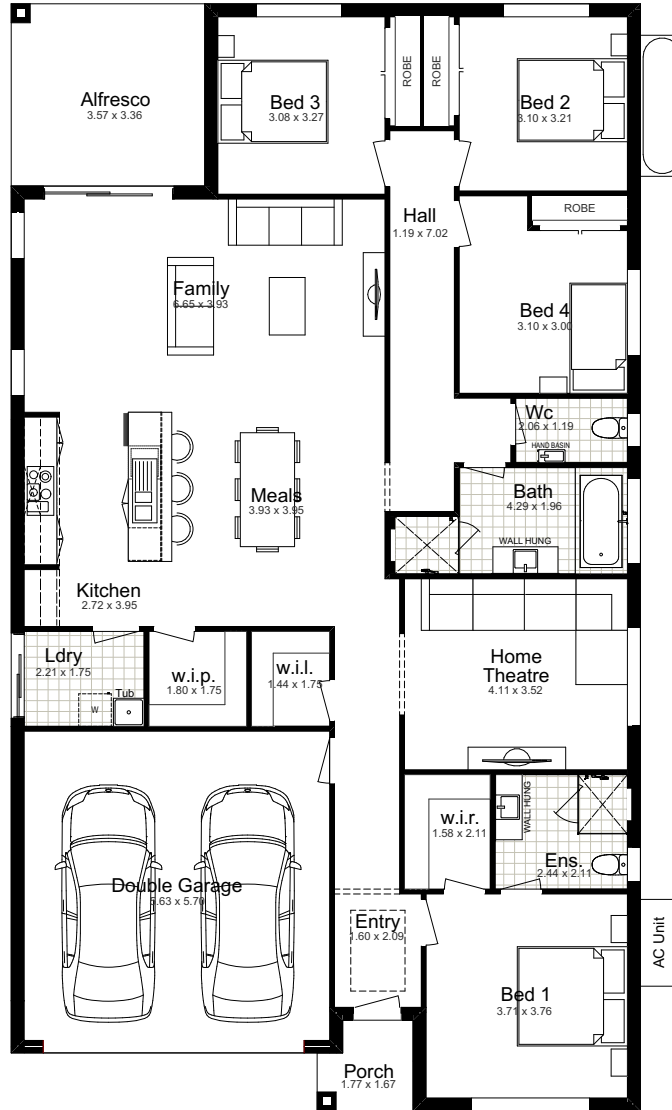
Package Price
\$914,500*

Home Design: Bentely 25
 Facade: Classic

LAND SIZE 585m²

TOTAL:	230.73m ²
Width:	11.60m
Depth:	20.41m
Ground Floor:	180.09m ²

Garage:	35.97m ²
Porch:	2.67m ²
Alfresco:	12.00m ²



GROUND FLOOR



DISCLAIMER: Façade Images shown on our brochures may feature alternative upgrades. Upgraded finishes are not included in the standard range or house design and should be used as a guide only. Plan dimensions, sizes & square meters will vary dependent on the chosen house façade & design. Better Built Homes reserves the right to revise plans, specifications & prices without notice or obligation. All plans are Copyright of Better Built Homes. Licence No. 244242C.