



Lot 116 Loxford Estate - Gillieston Heights

Allira 24 **\$939,000***

 4  2  2  222.2m²  718m²

ALLIRA 24 VOGUE FACADE

With light-filled spaces at every turn and a living space that reaches out to the alfresco area, the Allira has it all. The embodiment of a true family home with four bedrooms and a spacious kitchen at the heart of the clever floorplan, the Allira has been designed to grow with you in every way.

INCLUSIONS

- 20mm stone benchtops to Kitchen & Bathrooms
- Ducted air conditioning
- 2600 mm ceiling height
- 900 mm appliances plus 600 mm dishwasher
- Quality floor coverings
- 5.7kW Solar
- Site Costs*

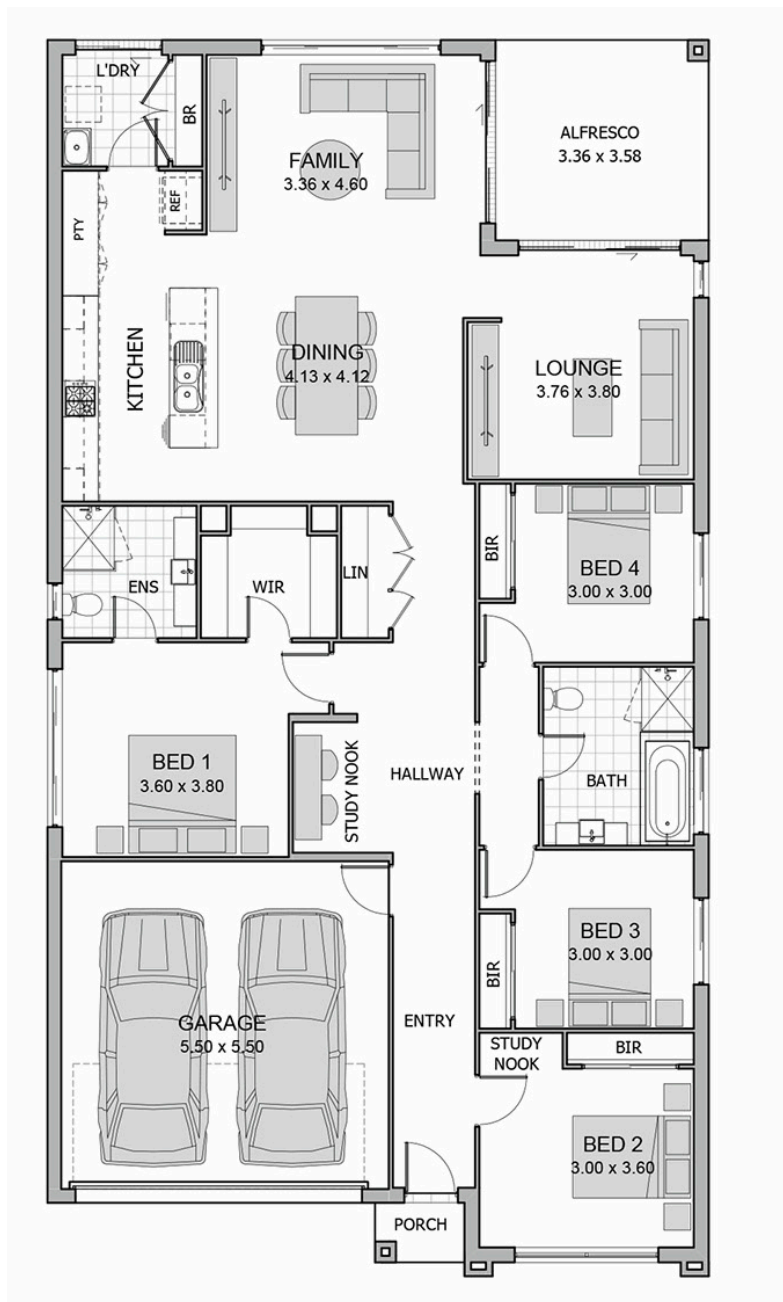
LOCATION & LIFESTYLE

The Loxford is a premium masterplanned land estate located off Cessnock Road in Gillieston Heights, Residents enjoy tree-lined streets, public art installations, and active cycleways. Its prime location offers natural country charm while remaining minutes from Maitland CBD and 40 minutes from Newcastle.

Taylor Reader

0459 714 445

taylor.reader@rawson.com.au



This plan is for illustrative purposes only - not to scale.

| | |
|--------------|---------------------|
| Ground Floor | 175.9m ² |
| Garage | 32.83m ² |

| | |
|--------------|----------------------------|
| Alfresco | 12.03m ² |
| Porch | 1.5m ² |
| Total | 222.27m² |