

THE SUTTON 194

Pearson - Focus

HUNTER
HOMES



\$805,164

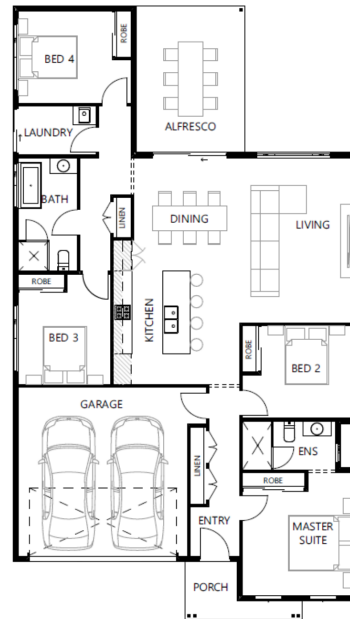
Lot 305 Premier Boulevard, Gillieston Heights, NSW 2321

Land 540m²



Inclusions

- Standard Site Costs & Basix
- Colorbond Roof
- Tiles to Patio & Alfresco
- 12.5KW Fujitsu A/C System
- 25 LED Downlights
- 900mm Front Door
- 2400mm High Ceilings
- Carpet & Tiles
- Haymes 3 Coat Paint
- 20mm Stone Benchtops
- Soft Close Doors and Drawers
- Fisher & Paykel, Oven, Dishwasher, Microwave
- Plain Concrete Driveway




The Loxford

Total sqs. 20.90

Total m² 194.2

Width(m) 11.22

Length(m) 19.98

Terms and Conditions: Images shown on this brochure are approximate and for illustration purposes only, these plans may not be drawn to scale. Façades and other images on this brochure may be shown as optional upgrades or not included, additional fixtures and finishes that are featured on this document may not be included in the base cost such as landscaping, tiling, decking, furniture, feature lighting, pools, driveways etc. Land estate pricing is subject to the developer's guidelines. Hunter Homes reserves the right to change plans and inclusions at any time. This package is subject to Contour, Soil, Bushfire Reports and Council Approval. All designs that are developed remain the property of Hunter Homes Pty Ltd under copyright law & we retain & claim all rights to these plans. Changing plans by 50% or more does not avoid legal responsibility for a copyright breach.

Hunter Homes Pty Ltd.

1300 BUY HOME | hunterhomesnsw.com

11 Hank Street, Heatherbrae NSW 2324

ABN 76 133 887 064 | Builder Licence 216162C

**BUILDING
LEGACY.**